

# MLS Statistics

October 2014 - Placer County

## RESIDENTIAL ONLY (Single Family Homes)

Preliminary Report

	Current Month	Last Month	% Change	Last Year	% Change
New Listings Published	439	534	-17.8%	560	-21.6%
Listing Inventory	1,238	1,403	-11.8%	994	24.5%
Number of New Escrows	206	329	-37.4%	327	-37.0%
Number of Closed Escrows	496	493	0.6%	444	11.7%
Median (1)	\$375,000	\$385,000	-2.6%	\$358,500	4.6%
Mean (2)	\$420,016	\$414,879	1.2%	\$404,183	3.9%
Mode (3)	\$300,000 to \$349,999	\$300,000 to \$349,999	NA	\$300,000 to \$349,999	NA

## YEAR-TO-DATE STATISTICS

	01/01/14 to 10/31/14	01/01/14 to 09/30/14	01/01/13 to 10/31/13	% Change
New Listings Published	6,483	6,044	5,633	15.1%
Number of New Escrows Opened	3,556	3,350	3,551	0.1%
Number of Closed Escrows	4,599	4,093	4,822	-4.6%
Dollar Volume of Closed Escrows	\$1,912,925,945	\$1,701,589,722	\$1,861,685,373	2.8%
Median	\$375,000	\$375,000	\$349,000	7.4%
Mean	\$415,944	\$415,732	\$386,082	7.7%

## PRICE BRACKET OF SALES BASED ON FINAL SALES

Selling Price	Singlefamily Residential	Percent of Total	Condos	Resid. Income	Resid. Lots/Land
UNDER \$69,999	0	0.0%	2	0	5
\$70,000-\$79,999	0	0.0%	0	0	1
\$80,000-\$89,999	0	0.0%	1	0	0
\$90,000-\$99,999	1	0.2%	1	0	0
\$100,000-\$119,999	0	0.0%	2	0	0
\$120,000-\$139,999	3	0.6%	1	0	1
\$140,000-\$159,999	3	0.6%	2	0	1
\$160,000-\$179,999	3	0.6%	7	0	3
\$180,000-\$199,999	5	1.0%	2	0	2
\$200,000-\$249,999	29	5.8%	5	1	1
\$250,000-\$299,999	63	12.7%	2	1	1
\$300,000-\$349,999	103	20.8%	0	1	2
\$350,000-\$399,999	72	14.5%	1	0	0
\$400,000-\$449,999	71	14.3%	0	0	1
\$450,000-\$499,999	43	8.7%	0	0	0
\$500,000-\$749,999	81	16.3%	0	0	0
\$750,000-\$999,999	12	2.4%	0	0	0
OVER \$1,000,000	7	1.4%	1	1	1
<b>TOTAL</b>	<b>496</b>		<b>27</b>	<b>4</b>	<b>19</b>

### Selling Prices of Classes Listed Above

\$89,999 or less	1.6%
\$90,000-\$139,999	1.6%
\$140,000-\$179,999	3.5%
\$180,000-\$299,999	20.5%
\$300,000-\$399,999	32.8%
\$400,000-\$749,999	35.9%
\$750,000 and over	4.0%



## TYPE OF FINANCING OF UNITS SOLD

Financing	# of Units
Cash	91
Conventional	289
FHA	68
VA	42
Other	34

## LENGTH OF TIME ON MARKET

Days on Market	# of units	% of total
1-30 Days	266	50.7%
31-60 Days	127	24.2%
61-90 Days	56	10.7%
91-120 Days	33	6.3%
121+Days	43	8.2%

This representation is based in whole or part on data supplied by MetroList. MetroList does not guarantee nor is it in any way responsible for its accuracy. Data maintained by MetroList may not reflect all real estate activity in the market. All information provided is deemed reliable but is not guaranteed and should be independently verified.

1. Median: The midpoint at which an equal number of homes sold above and below this value.
2. Mean: The arithmetic average of the total number of residential sales divided into total residential sales dollar volume.
3. Mode: The price range within which the most number of homes were sold.



# Home Sales Report - October 2014

Number of New Listing:	439	Total Sales Reported Last Month:	493
Number of New Listings Last Month:	534	Sales Volume:	\$208,327,773
Total Sales Reported:	496	Average Sales Price:	\$420,016

*These figures are based on MetroList Multiple Listing Service Data. Compiled monthly by PCAR, (916) 624-8271*

ALL AREAS		# Sold	Avg. Sale Price	Last Month	Last Year	
Total Sales	496	Condos	27	\$278,917	\$185,556	\$164,857
Pending Sales	206	Houses	496	\$420,016	\$414,879	\$404,183
Total Number of Listings	1,238	2 Bedrooms	81	\$341,900	\$322,726	\$298,368
Median Sales Price	\$375,000	3 Bedrooms	203	\$348,552	\$358,283	\$351,284
Average Sales Price	\$420,016	4+ Bedrooms	212	\$518,292	\$498,487	\$491,515

## Breakdown By Areas

Area 12747, 12661, 12668, 12678 Roseville				Last Year	Area 12650, 12663 Loomis, Penryn				Last Year
Total Sales:	202			186	Total Sales:	26			16
Pending Sales	75			131	Pending Sales	7			10
Total Number of Listings	380			290	Total Number of Listings	56			52
Median Sales Price	\$349,995			\$351,000	Median Sales Price	\$424,950			\$383,000
Average Sales Price	\$373,046			\$373,412	Average Sales Price	\$551,607			\$499,610
	<u>#Sold</u>	<u>Avg. Sales Price</u>	<u>Last Month</u>	<u>Last Year</u>		<u>#Sold</u>	<u>Avg. Sales Price</u>	<u>Last Month</u>	<u>Last Year</u>
Condos	14	\$171,482	\$158,514	\$199,500	Condos	0	\$0	\$222,500	\$0
Houses	202	\$373,046	\$388,199	\$373,412	Houses	26	\$551,607	\$540,752	\$499,610
2 Bedrooms	39	\$315,997	\$286,685	\$270,905	2 Bedrooms	2	\$281,000	\$0	\$345,000
3 Bedrooms	82	\$328,132	\$337,896	\$341,609	3 Bedrooms	14	\$449,064	\$475,429	\$377,900
4+ Bedrooms	81	\$445,982	\$448,583	\$431,619	4+ Bedrooms	10	\$749,289	\$586,479	\$773,952

Area 12746 Granite Bay				Last Year	Area 12201-12209 Lincoln				Last Year
Total Sales:	30			21	Total Sales:	79			82
Pending Sales	12			24	Pending Sales	40			59
Total Number of Listings	98			109	Total Number of Listings	213			188
Median Sales Price	\$604,500			\$841,500	Median Sales Price	\$333,500			\$340,000
Average Sales Price	\$727,607			\$0	Average Sales Price	\$358,091			\$372,325
	<u>#Sold</u>	<u>Avg. Sales Price</u>	<u>Last Month</u>	<u>Last Year</u>		<u>#Sold</u>	<u>Avg. Sales Price</u>	<u>Last Month</u>	<u>Last Year</u>
Condos	0	\$0	\$0	\$0	Condos	3	\$186,833	\$215,300	\$180,821
Houses	30	\$727,607	\$670,081	\$941,929	Houses	79	\$358,091	\$378,660	\$3,722,325
2 Bedrooms	1	\$755,000	\$602,500	\$825,000	2 Bedrooms	23	\$430,017	\$397,458	\$391,206
3 Bedrooms	11	\$481,764	\$508,500	\$556,200	3 Bedrooms	30	\$293,333	\$312,990	\$341,238
4+ Bedrooms	18	\$876,322	\$736,246	\$1,045,656	4+ Bedrooms	26	\$369,186	\$429,869	\$396,067

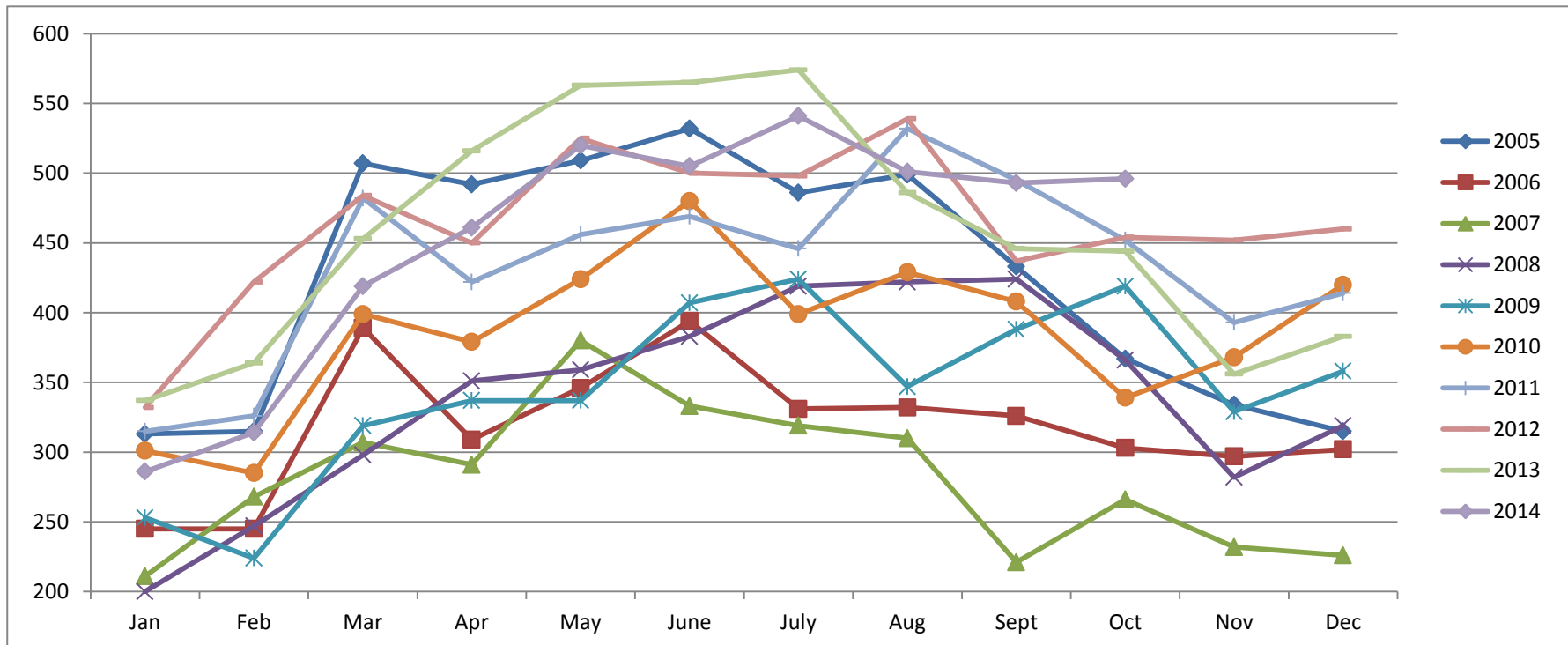
Area 12301, 12306, 12307, 12658, Auburn, Newcastle				Last Year	Area 12302, 12303, 12305 MV,CV,CX,AG,Wei,BC				Last Year
Total Sales:	48			43	Total Sales:	28			20
Pending Sales	27			28	Pending Sales	9			18
Total Number of Listings	154			114	Total Number of Listings	114			88
Median Sales Price	\$424,500			\$336,000	Median Sales Price	\$397,000			\$312,000
Average Sales Price	\$456,021			\$352,817	Average Sales Price	\$439,791			\$363,260
	<u>#Sold</u>	<u>Avg. Sales Price</u>	<u>Last Month</u>	<u>Last Year</u>		<u>#Sold</u>	<u>Avg. Sales Price</u>	<u>Last Month</u>	<u>Last Year</u>
Condos	4	\$108,750	\$216,333	\$94,300	Condos	0	\$0	\$0	\$0
Houses	48	\$456,021	\$434,580	\$352,817	Houses	28	\$439,791	\$357,989	\$363,260
2 Bedrooms	5	\$304,075	\$250,944	\$180,157	2 Bedrooms	4	\$218,800	\$185,714	\$226,200
3 Bedrooms	20	\$383,545	\$419,152	\$380,107	3 Bedrooms	13	\$343,765	\$345,693	\$400,775
4+ Bedrooms	23	\$552,076	\$638,420	\$405,239	4+ Bedrooms	11	\$633,636	\$554,857	\$418,286

Area 12677, 12765 Rocklin				Last Year	Area 12304 Foresthill				Last Year
Total Sales:	74			68	Total Sales:	8			7
Pending Sales	32			45	Pending Sales	5			12
Total Number of Listings	174			118	Total Number of Listings	40			28
Median Sales Price	\$398,750			\$378,250	Median Sales Price	\$282,750			\$231,000
Average Sales Price	\$426,435			\$398,134	Average Sales Price	\$320,488			\$246,929
	<u>#Sold</u>	<u>Avg. Sales Price</u>	<u>Last Month</u>	<u>Last Year</u>		<u>#Sold</u>	<u>Avg. Sales Price</u>	<u>Last Month</u>	<u>Last Year</u>
Condos	4	\$191,750	\$163,500	\$164,111	Condos	0	\$0	\$0	\$0
Houses	74	\$426,435	\$419,087	\$398,134	Houses	8	\$320,488	\$274,090	\$246,929
2 Bedrooms	5	\$285,400	\$278,000	\$274,750	2 Bedrooms	2	\$170,000	\$212,000	\$142,500
3 Bedrooms	28	\$352,257	\$369,156	\$326,774	3 Bedrooms	4	\$317,475	\$282,700	\$251,375
4+ Bedrooms	41	\$494,293	\$473,140	\$464,456	4+ Bedrooms	2	\$477,000	\$338,000	\$438,000

# Placer County Association of REALTORS® (PCAR) Monthly Closed Escrows (2005-2014)

(Placer County Resale Homes)

	Jan	Feb	Mar	Apr	May	June	July	Aug	Sept	Oct	Nov	Dec
<b>2005</b>	313	315	507	492	509	532	486	499	433	367	334	315
<b>2006</b>	245	245	389	309	346	394	331	332	326	303	297	302
<b>2007</b>	211	268	307	291	380	333	319	310	221	266	232	226
<b>2008</b>	200	247	298	351	359	383	419	422	424	366	282	319
<b>2009</b>	253	224	319	337	337	407	424	347	388	419	329	358
<b>2010</b>	301	285	399	379	424	480	399	429	408	339	368	420
<b>2011</b>	315	326	482	422	456	469	446	532	495	452	393	414
<b>2012</b>	332	422	484	450	525	500	498	539	437	454	452	460
<b>2013</b>	337	364	453	516	563	565	574	486	446	444	356	383
<b>2014</b>	286	314	419	461	520	505	541	501	493	496		

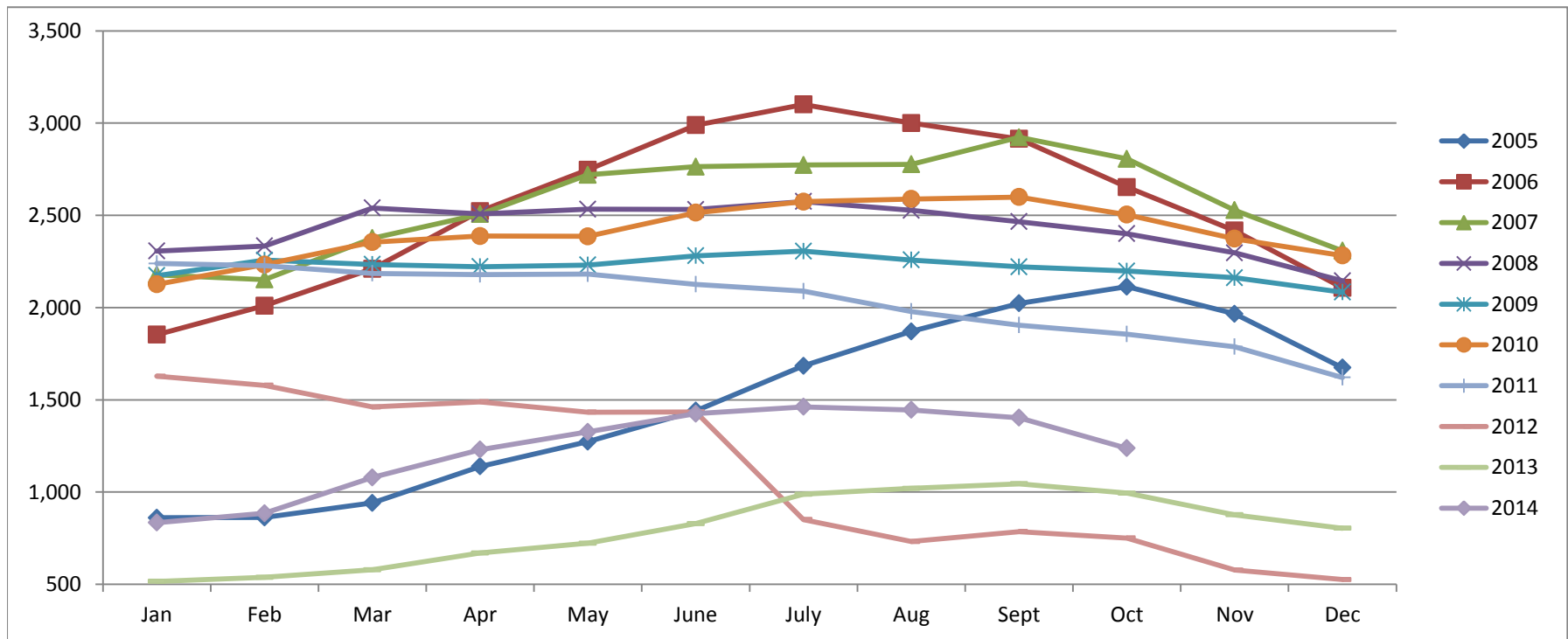


Based on MetroList™ Multiple Listing Service Data. Compiled monthly by PCAR, (916) 624-8271.

# Placer County Association of REALTORS® (PCAR) Total Listing Inventory by Month (2005-2014)

(Placer County Resale Homes)

	Jan	Feb	Mar	Apr	May	June	July	Aug	Sept	Oct	Nov	Dec
2005	861	862	941	1,139	1,273	1,441	1,684	1,871	2,023	2,113	1,966	1,674
2006	1,853	2,010	2,210	2,523	2,747	2,989	3,101	3,000	2,915	2,653	2,417	2,107
2007	2,178	2,152	2,376	2,507	2,720	2,764	2,773	2,777	2,923	2,806	2,528	2,308
2008	2,307	2,334	2,540	2,508	2,533	2,532	2,575	2,527	2,466	2,401	2,297	2,145
2009	2,173	2,257	2,234	2,222	2,231	2,281	2,306	2,258	2,221	2,198	2,162	2,084
2010	2,126	2,233	2,355	2,388	2,386	2,514	2,574	2,589	2,599	2,504	2,373	2,282
2011	2,239	2,227	2,185	2,179	2,182	2,126	2,089	1,979	1,905	1,856	1,788	1,621
2012	1,628	1,579	1,461	1,489	1,433	1,435	851	732	786	751	577	526
2013	516	538	579	670	723	829	988	1,020	1,045	994	877	804
2014	834	885	1,079	1,230	1,326	1,425	1,462	1,445	1,403	1,238		

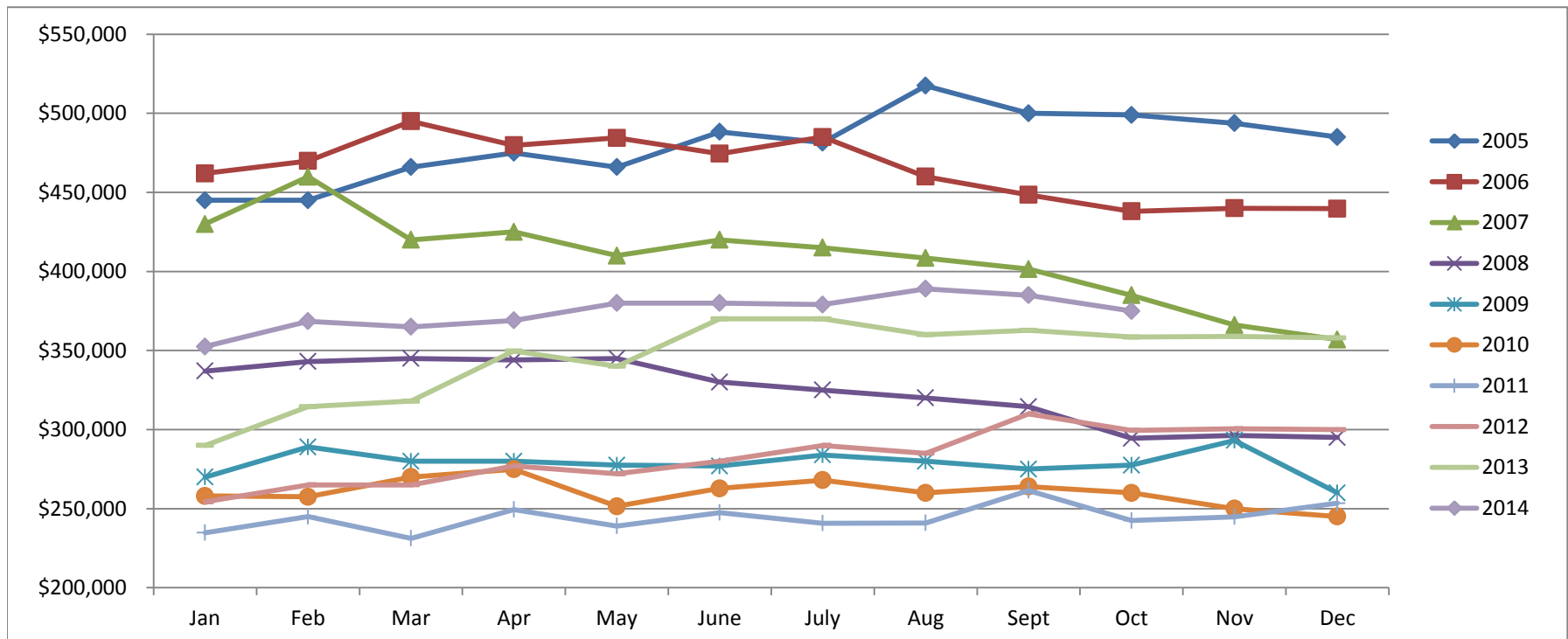


Based on MetroList™ Multiple Listing Service Data. Compiled monthly by PCAR, (916) 624-8271.

# Placer County Association of REALTORS® (PCAR) Median Price for Single-Family Detached Homes (2005-2014)

(Placer County Resale Homes)

	Jan	Feb	Mar	Apr	May	June	July	Aug	Sept	Oct	Nov	Dec
<b>2005</b>	\$445,000	\$445,000	\$466,000	\$475,000	\$466,000	\$488,250	\$481,500	\$517,500	\$500,000	\$499,000	\$493,750	\$485,000
<b>2006</b>	\$462,000	\$469,900	\$495,000	\$479,800	\$484,500	\$474,500	\$485,000	\$460,000	\$448,500	\$438,000	\$439,974	\$439,700
<b>2007</b>	\$430,000	\$459,900	\$419,950	\$425,000	\$410,000	\$420,000	\$415,000	\$408,500	\$401,500	\$385,000	\$366,087	\$356,928
<b>2008</b>	\$337,000	\$343,000	\$345,000	\$344,000	\$345,000	\$330,000	\$325,000	\$320,000	\$314,450	\$294,450	\$296,217	\$295,000
<b>2009</b>	\$270,000	\$289,000	\$280,000	\$280,000	\$277,500	\$277,000	\$283,950	\$280,000	\$275,000	\$277,500	\$293,116	\$260,000
<b>2010</b>	\$258,000	\$257,500	\$270,000	\$274,950	\$251,500	\$262,803	\$268,000	\$260,000	\$264,000	\$260,000	\$250,000	\$245,000
<b>2011</b>	\$234,750	\$245,000	\$231,250	\$249,450	\$239,000	\$247,500	\$240,750	\$241,000	\$261,500	\$242,500	\$244,900	\$253,450
<b>2012</b>	\$254,325	\$265,000	\$265,000	\$277,000	\$272,000	\$280,000	\$290,000	\$285,000	\$310,000	\$299,500	\$300,500	\$299,975
<b>2013</b>	\$290,000	\$314,500	\$318,000	\$349,700	\$340,000	\$370,000	\$370,000	\$360,000	\$362,750	\$358,500	\$359,000	\$358,000
<b>2014</b>	\$352,500	\$368,500	\$365,000	\$369,000	\$379,995	\$380,000	\$379,000	\$389,000	\$385,000	\$375,000		

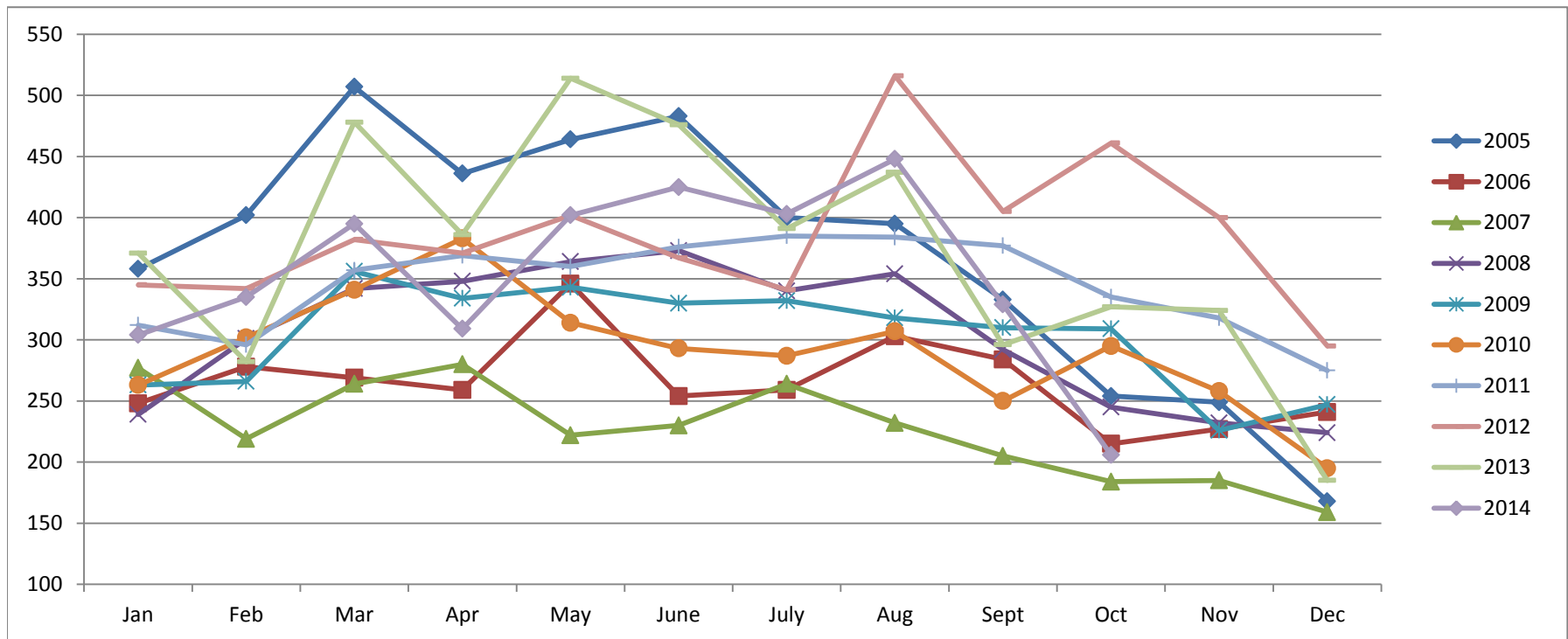


Based on MetroList™ Multiple Listing Service Data. Compiled monthly by PCAR, (916) 624-8271.

# Placer County Association of REALTORS® (PCAR) Monthly New Sales Opened (2005-2014)

(Placer County Resale Homes)

	Jan	Feb	Mar	Apr	May	June	July	Aug	Sept	Oct	Nov	Dec
<b>2005</b>	358	402	507	436	464	483	400	395	333	254	249	168
<b>2006</b>	248	278	269	259	346	254	259	303	284	215	227	241
<b>2007</b>	277	219	264	280	222	230	264	232	205	184	185	159
<b>2008</b>	239	301	342	348	364	373	340	354	292	245	232	224
<b>2009</b>	263	266	356	334	343	330	332	318	310	309	226	247
<b>2010</b>	263	302	341	383	314	293	287	307	250	295	258	195
<b>2011</b>	312	296	357	369	360	376	385	384	377	335	318	275
<b>2012</b>	345	342	382	371	402	367	341	516	405	461	400	295
<b>2013</b>	371	282	478	386	514	476	391	437	296	327	324	185
<b>2014</b>	304	335	395	309	402	425	403	448	329	206		



Based on MetroList™ Multiple Listing Service Data. Compiled monthly by PCAR, (916) 624-8271.