

MLS Statistics

October 2013 - Placer County

RESIDENTIAL ONLY (Single Family Homes)

Preliminary Report

	Current Month	Last Month	% Change	Last Year	% Change
New Listings Published	560	454	23.3%	466	20.2%
Listing Inventory	994	1,045	-4.9%	751	32.4%
Number of New Escrows	327	296	10.5%	461	-29.1%
Number of Closed Escrows	444	446	-0.4%	454	-2.2%
Median (1)	\$358,500	\$362,750	-1.2%	\$299,500	19.7%
Mean (2)	\$404,183	\$391,718	3.2%	\$340,538	18.7%
Mode (3)	\$300,000 to \$349,999	\$300,000 to \$349,999	NA	\$250,000 to \$299,999	NA

YEAR-TO-DATE STATISTICS

	01/01/13 to 10/31/13	01/01/13 to 09/30/13	01/01/12 to 10/31/12	% Change
New Listings Published	5,633	5,073	4,696	20.0%
Number of New Escrows Opened	3,551	3,224	3,788	-6.3%
Number of Closed Escrows	4,822	4,370	4,674	3.2%
Dollar Volume of Closed Escrows	\$1,861,685,373	\$1,678,898,958	\$1,469,633,657	26.7%
Median	\$349,000	\$345,000	\$277,000	26.0%
Mean	\$386,082	\$384,187	\$315,333	22.4%

PRICE BRACKET OF SALES BASED ON FINAL SALES

Selling Price	Singlefamily Residential	Percent of Total	Condos	Resid. Income	Resid. Lots/Land
UNDER \$69,999	2	0.5%	0	0	0
\$70,000-\$79,999	0	0.0%	2	0	1
\$80,000-\$89,999	0	0.0%	0	0	0
\$90,000-\$99,999	0	0.0%	0	0	1
\$100,000-\$119,999	3	0.7%	1	0	1
\$120,000-\$139,999	2	0.5%	3	0	0
\$140,000-\$159,999	4	0.9%	7	0	2
\$160,000-\$179,999	5	1.1%	0	0	2
\$180,000-\$199,999	4	0.9%	2	0	0
\$200,000-\$249,999	36	8.1%	5	1	0
\$250,000-\$299,999	65	14.6%	1	1	0
\$300,000-\$349,999	81	18.2%	0	1	0
\$350,000-\$399,999	77	17.3%	0	0	1
\$400,000-\$449,999	51	11.5%	0	1	0
\$450,000-\$499,999	39	8.8%	0	0	0
\$500,000-\$749,999	53	11.9%	0	2	0
\$750,000-\$999,999	15	3.4%	0	0	0
OVER \$1,000,000	7	1.6%	0	0	0
TOTAL	444		21	6	8

Selling Prices of Classes Listed Above

\$89,999 or less	1.0%
\$90,000-\$139,999	2.3%
\$140,000-\$179,999	4.2%
\$180,000-\$299,999	24.0%
\$300,000-\$399,999	33.4%
\$400,000-\$749,999	30.5%
\$750,000 and over	4.6%



TYPE OF FINANCING OF UNITS SOLD

Financing	# of Units
Cash	87
Conventional	258
FHA	76
VA	32
Other	18

LENGTH OF TIME ON MARKET

Days on Market	# of units	% of total
1-30 Days	293	62.2%
31-60 Days	98	20.8%
61-90 Days	45	9.6%
91-120 Days	13	2.8%
121+Days	22	4.7%

This representation is based in whole or part on data supplied by MetroList. MetroList does not guarantee nor is it in any way responsible for its accuracy. Data maintained by MetroList may not reflect all real estate activity in the market. All information provided is deemed reliable but is not guaranteed and should be independently verified.

1. Median: The midpoint at which an equal number of homes sold above and below this value.
2. Mean: The arithmetic average of the total number of residential sales divided into total residential sales dollar volume.
3. Mode: The price range within which the most number of homes were sold.



Home Sales Report - October 2013

Number of New Listing: 560 Total Sales Reported Last Month: 446
 Number of New Listings Last Month: 454 Sales Volume: \$179,457,437
 Total Sales Reported: 444 Average Sales Price: \$404,183

These figures are based on MetroList Multiple Listing Service Data. Compiled monthly by PCAR, (916) 624-8271

ALL AREAS		# Sold	Avg. Sale Price	Last Month	Last Year	
Total Sales	444	Condos	21	\$164,857	\$158,918	\$137,693
Pending Sales	327	Houses	444	\$404,183	\$391,718	\$340,538
Total Number of Listings	994	2 Bedrooms	57	\$298,368	\$324,630	\$231,006
Median Sales Price	\$358,500	3 Bedrooms	198	\$351,284	\$329,334	\$280,764
Average Sales Price	\$404,183	4+ Bedrooms	189	\$491,515	\$487,123	\$432,158

Breakdown By Areas

Area 12747, 12661, 12668, 12678 Roseville				Last Year	Area 12650, 12663 Loomis, Penryn				Last Year
Total Sales:	186			152	Total Sales:	16			19
Pending Sales	131			164	Pending Sales	10			9
Total Number of Listings	290			190	Total Number of Listings	52			29
Median Sales Price	\$351,000		\$292,500		Median Sales Price	\$383,000		\$328,000	
Average Sales Price	\$373,412		\$317,080		Average Sales Price	\$499,610		\$453,941	
	<u>#Sold</u>	<u>Avg. Sales Price</u>	<u>Last Month</u>	<u>Last Year</u>		<u>#Sold</u>	<u>Avg. Sales Price</u>	<u>Last Month</u>	<u>Last Year</u>
Condos	4	\$199,500	\$181,840	\$147,081	Condos	0	\$0	\$230,000	\$0
Houses	186	\$373,412	\$364,889	\$317,080	Houses	16	\$499,610	\$725,703	\$453,941
2 Bedrooms	22	\$270,905	\$268,448	\$228,463	2 Bedrooms	1	\$345,000	\$0	\$160,000
3 Bedrooms	81	\$341,609	\$317,066	\$276,825	3 Bedrooms	10	\$377,900	\$406,740	\$301,298
4+ Bedrooms	83	\$431,619	\$445,895	\$388,533	4+ Bedrooms	5	\$773,952	\$1,044,667	\$654,944

Area 12746 Granite Bay				Last Year	Area 12201-12208 Lincoln				Last Year
Total Sales:	21			27	Total Sales:	82			85
Pending Sales	24			25	Pending Sales	59			98
Total Number of Listings	109			80	Total Number of Listings	188			117
Median Sales Price	\$841,500		\$575,000		Median Sales Price	\$340,000		\$270,000	
Average Sales Price	\$941,929		\$594,018		Average Sales Price	\$372,325		\$311,781	
	<u>#Sold</u>	<u>Avg. Sales Price</u>	<u>Last Month</u>	<u>Last Year</u>		<u>#Sold</u>	<u>Avg. Sales Price</u>	<u>Last Month</u>	<u>Last Year</u>
Condos	0	\$0	\$0	\$0	Condos	5	\$180,821	\$198,625	\$128,500
Houses	21	\$941,929	\$608,383	\$594,018	Houses	82	\$372,325	\$364,358	\$311,781
2 Bedrooms	1	\$825,000	\$0	\$0	2 Bedrooms	17	\$391,206	\$384,309	\$287,594
3 Bedrooms	4	\$556,250	\$332,600	\$464,500	3 Bedrooms	34	\$341,238	\$339,913	\$269,099
4+ Bedrooms	16	\$1,045,656	\$714,454	\$631,023	4+ Bedrooms	31	\$396,067	\$372,693	\$359,155

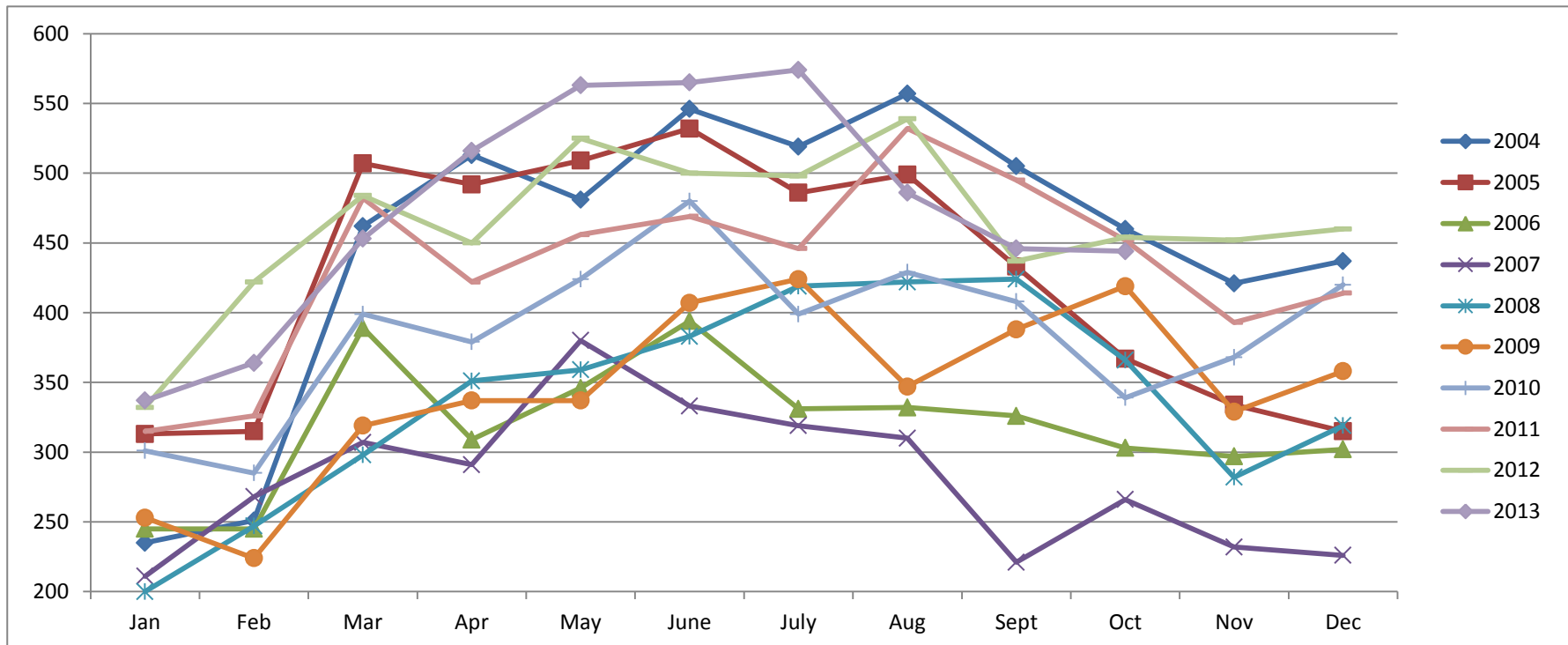
Area 12301, 12306, 12307, 12658, Auburn, Newcastle				Last Year	Area 12302, 12303, 12305 MV, GV, CX, AG, Wei, BC				Last Year
Total Sales:	43			50	Total Sales:	20			32
Pending Sales	28			46	Pending Sales	18			25
Total Number of Listings	114			134	Total Number of Listings	88			82
Median Sales Price	\$336,000		\$338,500		Median Sales Price	\$312,000		\$199,500	
Average Sales Price	\$352,817		\$354,888		Average Sales Price	\$363,260		\$258,551	
	<u>#Sold</u>	<u>Avg. Sales Price</u>	<u>Last Month</u>	<u>Last Year</u>		<u>#Sold</u>	<u>Avg. Sales Price</u>	<u>Last Month</u>	<u>Last Year</u>
Condos	3	\$94,300	\$142,563	\$57,000	Condos	0	\$0	\$102,500	\$0
Houses	43	\$352,817	\$373,052	\$354,888	Houses	20	\$363,260	\$360,262	\$258,551
2 Bedrooms	7	\$180,157	\$305,500	\$140,600	2 Bedrooms	5	\$226,200	\$211,750	\$179,164
3 Bedrooms	27	\$380,107	\$314,571	\$349,711	3 Bedrooms	8	\$400,775	\$359,862	\$226,068
4+ Bedrooms	9	\$405,239	\$518,964	\$418,363	4+ Bedrooms	7	\$418,286	\$435,366	\$499,625

Area 12677, 12765 Rocklin				Last Year	Area 12304 Foresthill				Last Year
Total Sales:	68			79	Total Sales:	7			9
Pending Sales	45			72	Pending Sales	12			11
Total Number of Listings	118			77	Total Number of Listings	28			34
Median Sales Price	\$378,250		\$299,000		Median Sales Price	\$231,000		\$159,900	
Average Sales Price	\$398,134		\$333,897		Average Sales Price	\$246,929		\$166,411	
	<u>#Sold</u>	<u>Avg. Sales Price</u>	<u>Last Month</u>	<u>Last Year</u>		<u>#Sold</u>	<u>Avg. Sales Price</u>	<u>Last Month</u>	<u>Last Year</u>
Condos	9	\$164,111	\$146,313	\$153,414	Condos	0	\$0	\$0	\$0
Houses	68	\$398,134	\$393,977	\$333,897	Houses	7	\$246,929	\$269,050	\$166,411
2 Bedrooms	2	\$274,750	\$343,083	\$318,333	2 Bedrooms	2	\$142,500	\$0	\$149,950
3 Bedrooms	30	\$326,774	\$358,025	\$264,060	3 Bedrooms	4	\$251,375	\$223,188	\$158,800
4+ Bedrooms	36	\$464,456	\$436,300	\$394,652	4+ Bedrooms	1	\$438,000	\$452,500	\$245,000

Placer County Association of REALTORS® (PCAR) Monthly Closed Escrows (2004-2013)

(Placer County Resale Homes)

	<i>Jan</i>	<i>Feb</i>	<i>Mar</i>	<i>Apr</i>	<i>May</i>	<i>June</i>	<i>July</i>	<i>Aug</i>	<i>Sept</i>	<i>Oct</i>	<i>Nov</i>	<i>Dec</i>
2004	235	251	462	513	481	546	519	557	505	460	421	437
2005	313	315	507	492	509	532	486	499	433	367	334	315
2006	245	245	389	309	346	394	331	332	326	303	297	302
2007	211	268	307	291	380	333	319	310	221	266	232	226
2008	200	247	298	351	359	383	419	422	424	366	282	319
2009	253	224	319	337	337	407	424	347	388	419	329	358
2010	301	285	399	379	424	480	399	429	408	339	368	420
2011	315	326	482	422	456	469	446	532	495	452	393	414
2012	332	422	484	450	525	500	498	539	437	454	452	460
2013	337	364	453	516	563	565	574	486	446	444		

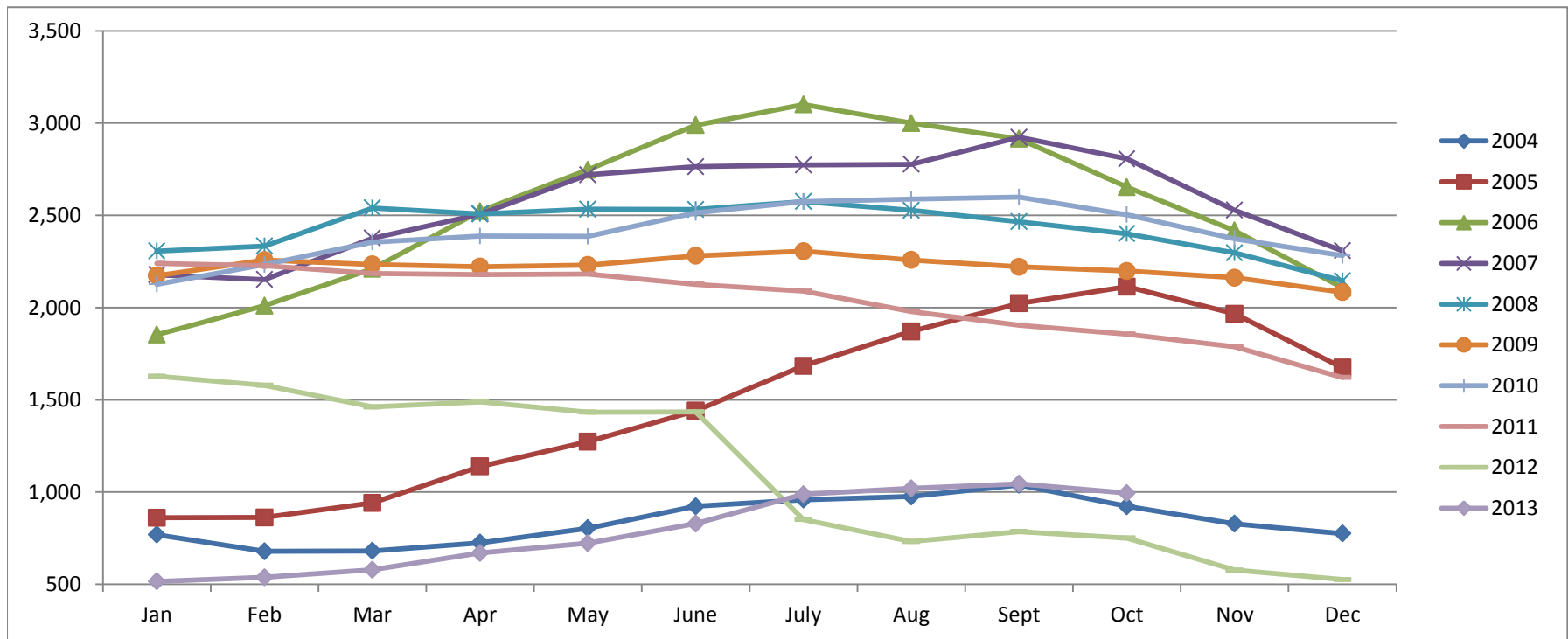


Based on MetroList™ Multiple Listing Service Data. Compiled monthly by PCAR, (916) 624-8271.

Placer County Association of REALTORS® (PCAR) Total Listing Inventory by Month (2004-2013)

(Placer County Resale Homes)

	Jan	Feb	Mar	Apr	May	June	July	Aug	Sept	Oct	Nov	Dec
2004	769	679	681	725	804	923	959	976	1,039	923	828	775
2005	861	862	941	1,139	1,273	1,441	1,684	1,871	2,023	2,113	1,966	1,674
2006	1,853	2,010	2,210	2,523	2,747	2,989	3,101	3,000	2,915	2,653	2,417	2,107
2007	2,178	2,152	2,376	2,507	2,720	2,764	2,773	2,777	2,923	2,806	2,528	2,308
2008	2,307	2,334	2,540	2,508	2,533	2,532	2,575	2,527	2,466	2,401	2,297	2,145
2009	2,173	2,257	2,234	2,222	2,231	2,281	2,306	2,258	2,221	2,198	2,162	2,084
2010	2,126	2,233	2,355	2,388	2,386	2,514	2,574	2,589	2,599	2,504	2,373	2,282
2011	2,239	2,227	2,185	2,179	2,182	2,126	2,089	1,979	1,905	1,856	1,788	1,621
2012	1,628	1,579	1,461	1,489	1,433	1,435	851	732	786	751	577	526
2013	516	538	579	670	723	829	988	1,020	1,045	994		

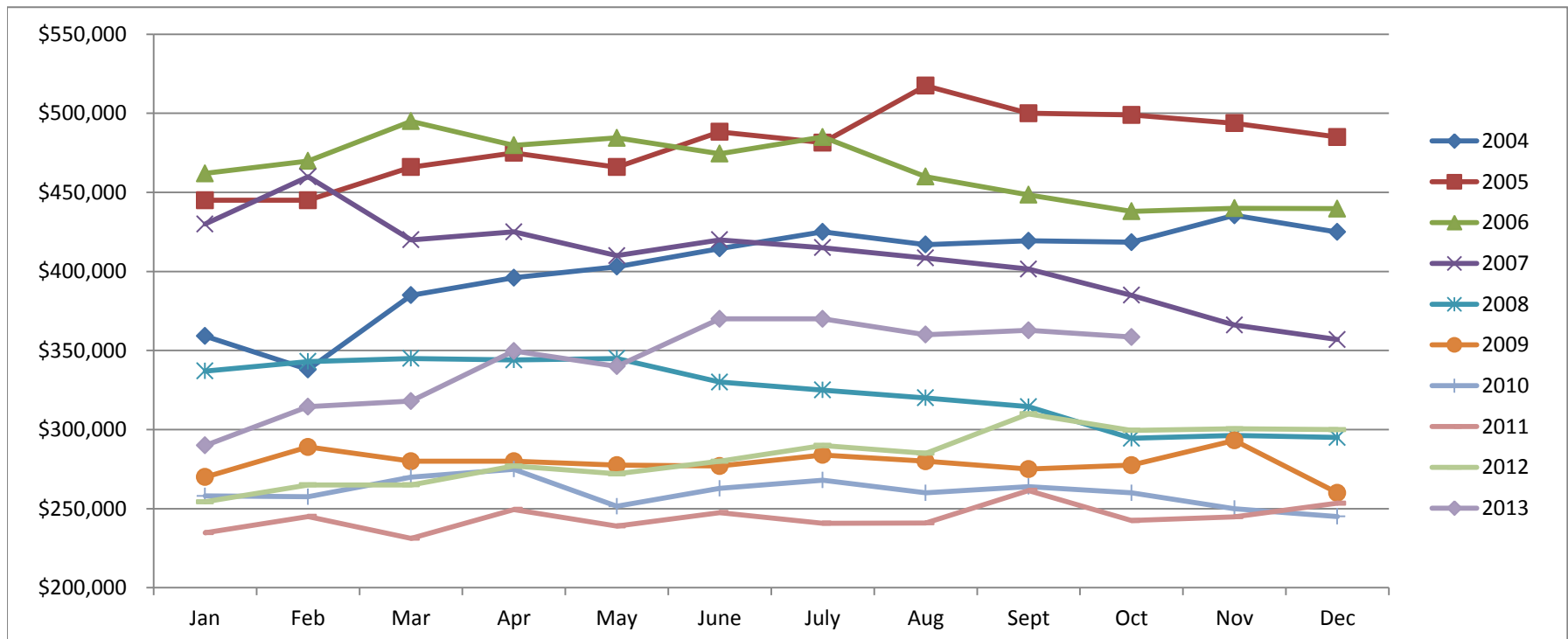


Based on MetroList™ Multiple Listing Service Data. Compiled monthly by PCAR, (916) 624-8271.

Placer County Association of REALTORS® (PCAR) Median Price for Single-Family Detached Homes (2004-2013)

(Placer County Resale Homes)

	Jan	Feb	Mar	Apr	May	June	July	Aug	Sept	Oct	Nov	Dec
2004	\$359,100	\$338,000	\$385,000	\$396,000	\$403,000	\$414,500	\$425,000	\$417,000	\$419,350	\$418,500	\$435,500	\$424,975
2005	\$445,000	\$445,000	\$466,000	\$475,000	\$466,000	\$488,250	\$481,500	\$517,500	\$500,000	\$499,000	\$493,750	\$485,000
2006	\$462,000	\$469,900	\$495,000	\$479,800	\$484,500	\$474,500	\$485,000	\$460,000	\$448,500	\$438,000	\$439,974	\$439,700
2007	\$430,000	\$459,900	\$419,950	\$425,000	\$410,000	\$420,000	\$415,000	\$408,500	\$401,500	\$385,000	\$366,087	\$356,928
2008	\$337,000	\$343,000	\$345,000	\$344,000	\$345,000	\$330,000	\$325,000	\$320,000	\$314,450	\$294,450	\$296,217	\$295,000
2009	\$270,000	\$289,000	\$280,000	\$280,000	\$277,500	\$277,000	\$283,950	\$280,000	\$275,000	\$277,500	\$293,116	\$260,000
2010	\$258,000	\$257,500	\$270,000	\$274,950	\$251,500	\$262,803	\$268,000	\$260,000	\$264,000	\$260,000	\$250,000	\$245,000
2011	\$234,750	\$245,000	\$231,250	\$249,450	\$239,000	\$247,500	\$240,750	\$241,000	\$261,500	\$242,500	\$244,900	\$253,450
2012	\$254,325	\$265,000	\$265,000	\$277,000	\$272,000	\$280,000	\$290,000	\$285,000	\$310,000	\$299,500	\$300,500	\$299,975
2013	\$290,000	\$314,500	\$318,000	\$349,700	\$340,000	\$370,000	\$370,000	\$360,000	\$362,750	\$358,500		

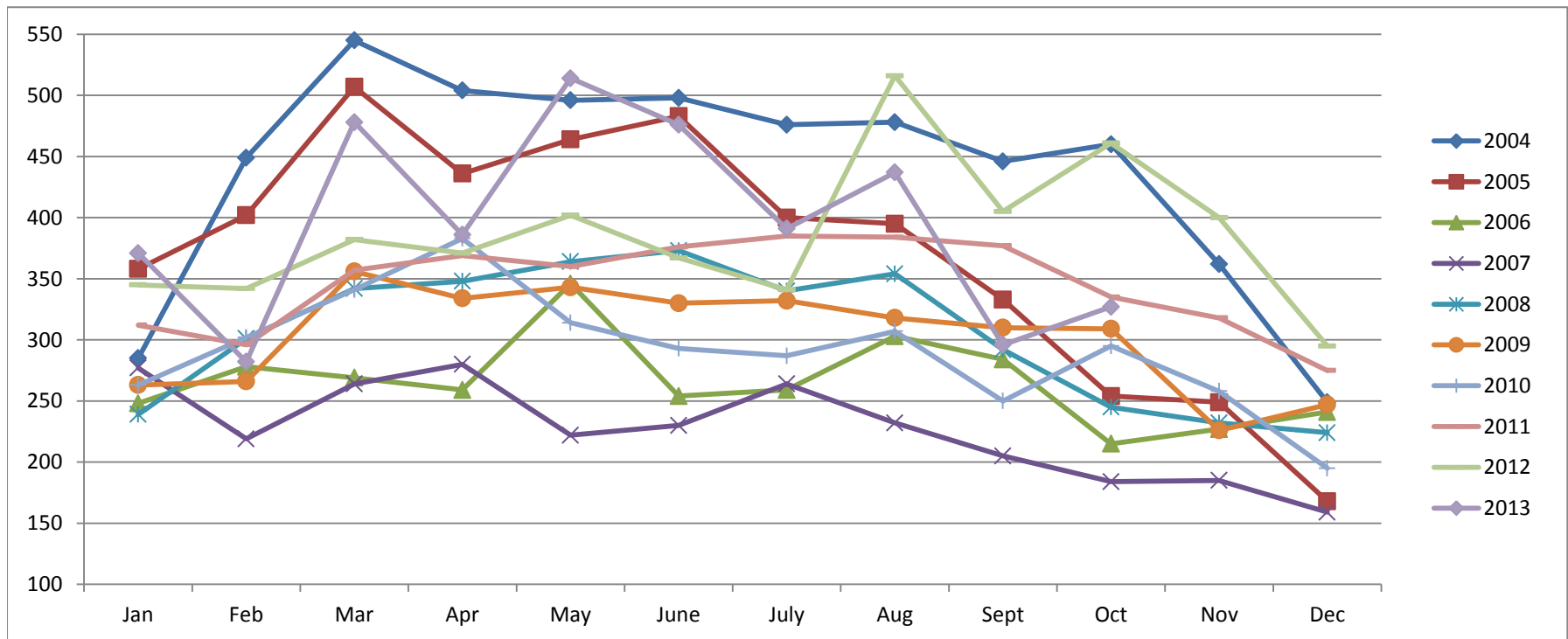


Based on MetroList™ Multiple Listing Service Data. Compiled monthly by PCAR, (916) 624-8271.

Placer County Association of REALTORS® (PCAR) Monthly New Sales Opened (2004-2013)

(Placer County Resale Homes)

	Jan	Feb	Mar	Apr	May	June	July	Aug	Sept	Oct	Nov	Dec
2004	285	449	545	504	496	498	476	478	446	460	362	249
2005	358	402	507	436	464	483	400	395	333	254	249	168
2006	248	278	269	259	346	254	259	303	284	215	227	241
2007	277	219	264	280	222	230	264	232	205	184	185	159
2008	239	301	342	348	364	373	340	354	292	245	232	224
2009	263	266	356	334	343	330	332	318	310	309	226	247
2010	263	302	341	383	314	293	287	307	250	295	258	195
2011	312	296	357	369	360	376	385	384	377	335	318	275
2012	345	342	382	371	402	367	341	516	405	461	400	295
2013	371	282	478	386	514	476	391	437	296	327		



Based on MetroList™ Multiple Listing Service Data. Compiled monthly by PCAR, (916) 624-8271.