

MLS Statistics

March 2015 - Placer County

RESIDENTIAL ONLY (Single Family Homes)

Preliminary Report

	Current Month	Last Month	% Change	Last Year	% Change
New Listings Published	683	373	83.1%	575	18.8%
Listing Inventory	1,098	1,019	7.8%	1,079	1.8%
Number of New Escrows	554	250	121.6%	395	40.3%
Number of Closed Escrows	520	345	50.7%	419	24.1%
Median (1)	\$380,000	\$365,000	4.1%	\$365,000	4.1%
Mean (2)	\$417,628	\$411,027	1.6%	\$401,753	4.0%
Mode (3)	\$300,000 to \$349,999	\$300,000 to \$349,999	NA	\$350,000 to \$399,999	NA

YEAR-TO-DATE STATISTICS

	01/01/15 to 02/28/15	01/01/15 to 02/28/15	01/01/14 to 03/31/14	% Change
New Listings Published	1,489	806	1,704	-12.6%
Number of New Escrows Opened	1,074	520	1,034	3.9%
Number of Closed Escrows	1,157	636	1,025	12.9%
Dollar Volume of Closed Escrows	\$482,045,213	\$264,468,969	\$409,043,611	17.8%
Median	\$375,000	\$369,950	\$365,000	2.7%
Mean	\$416,634	\$415,832	\$399,067	4.4%

PRICE BRACKET OF SALES BASED ON FINAL SALES

Selling Price	Singlefamily Residential	Percent of Total	Condos	Resid. Income	Resid. Lots/Land
UNDER \$69,999	2	0.4%	1	0	3
\$70,000-\$79,999	0	0.0%	2	0	2
\$80,000-\$89,999	0	0.0%	0	0	1
\$90,000-\$99,999	2	0.4%	0	0	1
\$100,000-\$119,999	1	0.2%	1	0	1
\$120,000-\$139,999	1	0.2%	1	0	4
\$140,000-\$159,999	1	0.2%	3	0	2
\$160,000-\$179,999	3	0.6%	3	0	1
\$180,000-\$199,999	4	0.8%	2	0	4
\$200,000-\$249,999	29	5.6%	6	0	2
\$250,000-\$299,999	59	11.3%	4	0	2
\$300,000-\$349,999	96	18.5%	1	1	2
\$350,000-\$399,999	94	18.1%	0	1	0
\$400,000-\$449,999	72	13.8%	0	0	1
\$450,000-\$499,999	44	8.5%	0	0	0
\$500,000-\$749,999	86	16.5%	0	0	2
\$750,000-\$999,999	19	3.7%	0	0	1
OVER \$1,000,000	7	1.3%	0	0	1
TOTAL	520		24	2	30

Selling Prices of Classes Listed Above

\$89,999 or less	1.9%
\$90,000-\$139,999	2.1%
\$140,000-\$179,999	2.3%
\$180,000-\$299,999	19.4%
\$300,000-\$399,999	33.9%
\$400,000-\$749,999	35.6%
\$750,000 and over	4.9%



TYPE OF FINANCING OF UNITS SOLD

Financing	# of Units
Cash	104
Conventional	293
FHA	106
VA	38
Other	9

LENGTH OF TIME ON MARKET

Days on Market	# of units	% of total
1-30 Days	327	59.5%
31-60 Days	67	12.2%
61-90 Days	52	9.5%
91-120 Days	40	7.3%
121+Days	64	11.6%

This representation is based in whole or part on data supplied by MetroList. MetroList does not guarantee nor is it in any way responsible for its accuracy. Data maintained by MetroList may not reflect all real estate activity in the market. All information provided is deemed reliable but is not guaranteed and should be independently verified.

1. Median: The midpoint at which an equal number of homes sold above and below this value.
2. Mean: The arithmetic average of the total number of residential sales divided into total residential sales dollar volume.
3. Mode: The price range within which the most number of homes were sold.



Home Sales Report - March 2015

Number of New Listing:	683	Total Sales Reported Last Month:	345
Number of New Listings Last Month:	373	Sales Volume:	\$217,166,444
Total Sales Reported:	520	Average Sales Price:	\$417,628

These figures are based on MetroList Multiple Listing Service Data. Compiled monthly by PCAR, (916) 624-8271

ALL AREAS		# Sold	Avg. Sale Price	Last Month	Last Year	
Total Sales	520	Condos	24	\$187,354	\$155,738	\$162,095
Pending Sales	554	Houses	520	\$417,628	\$411,027	\$401,753
Total Number of Listings	1,098	2 Bedrooms	82	\$343,653	\$311,526	\$330,471
Median Sales Price	\$380,000	3 Bedrooms	209	\$355,721	\$347,026	\$355,170
Average Sales Price	\$417,628	4+ Bedrooms	229	\$500,617	\$498,125	\$481,215

Breakdown By Areas

Area 12747, 12661, 12668, 12678 Roseville				Area 12650, 12663 Loomis, Penryn				
			Last Year				Last Year	
Total Sales:	188		156	Total Sales:	14		19	
Pending Sales	198		144	Pending Sales	22		11	
Total Number of Listings	320		299	Total Number of Listings	76		55	
Median Sales Price	\$360,000		\$352,500	Median Sales Price	\$576,475		\$474,900	
Average Sales Price	\$381,551		\$372,224	Average Sales Price	\$564,389		\$550,329	
	<u>#Sold</u>	<u>Avg. Sales Price</u>	<u>Last Month</u>	<u>Last Year</u>	<u>#Sold</u>	<u>Avg. Sales Price</u>	<u>Last Month</u>	<u>Last Year</u>
Condos	6	\$188,167	\$186,786	\$177,333	0	\$0	\$0	\$0
Houses	188	\$381,551	\$378,509	\$372,224	14	\$564,389	\$405,900	\$550,329
2 Bedrooms	28	\$306,185	\$299,954	\$283,232	3	\$406,833	\$235,000	\$190,750
3 Bedrooms	88	\$344,538	\$329,441	\$335,491	7	\$505,564	\$455,000	\$390,883
4+ Bedrooms	72	\$456,099	\$456,126	\$451,409	4	\$785,500	\$483,167	\$702,677

Area 12746 Granite Bay				Area 12201-12209 Lincoln				
			Last Year				Last Year	
Total Sales:	37		15	Total Sales:	114		105	
Pending Sales	38		21	Pending Sales	108		87	
Total Number of Listings	98		121	Total Number of Listings	188		190	
Median Sales Price	\$628,000		\$532,000	Median Sales Price	\$355,000		\$350,000	
Average Sales Price	\$703,189		\$525,266	Average Sales Price	\$378,125		\$382,534	
	<u>#Sold</u>	<u>Avg. Sales Price</u>	<u>Last Month</u>	<u>Last Year</u>	<u>#Sold</u>	<u>Avg. Sales Price</u>	<u>Last Month</u>	<u>Last Year</u>
Condos	0	\$0	\$0	\$0	7	\$225,214	\$0	\$186,500
Houses	37	\$703,189	\$726,868	\$525,266	114	\$378,125	\$365,555	\$382,534
2 Bedrooms	1	\$366,000	\$0	\$0	25	\$437,560	\$410,272	\$401,712
3 Bedrooms	4	\$400,750	\$397,380	\$393,583	41	\$331,016	\$339,249	\$339,119
4+ Bedrooms	32	\$751,531	\$844,542	\$613,054	48	\$387,409	\$373,531	\$417,901

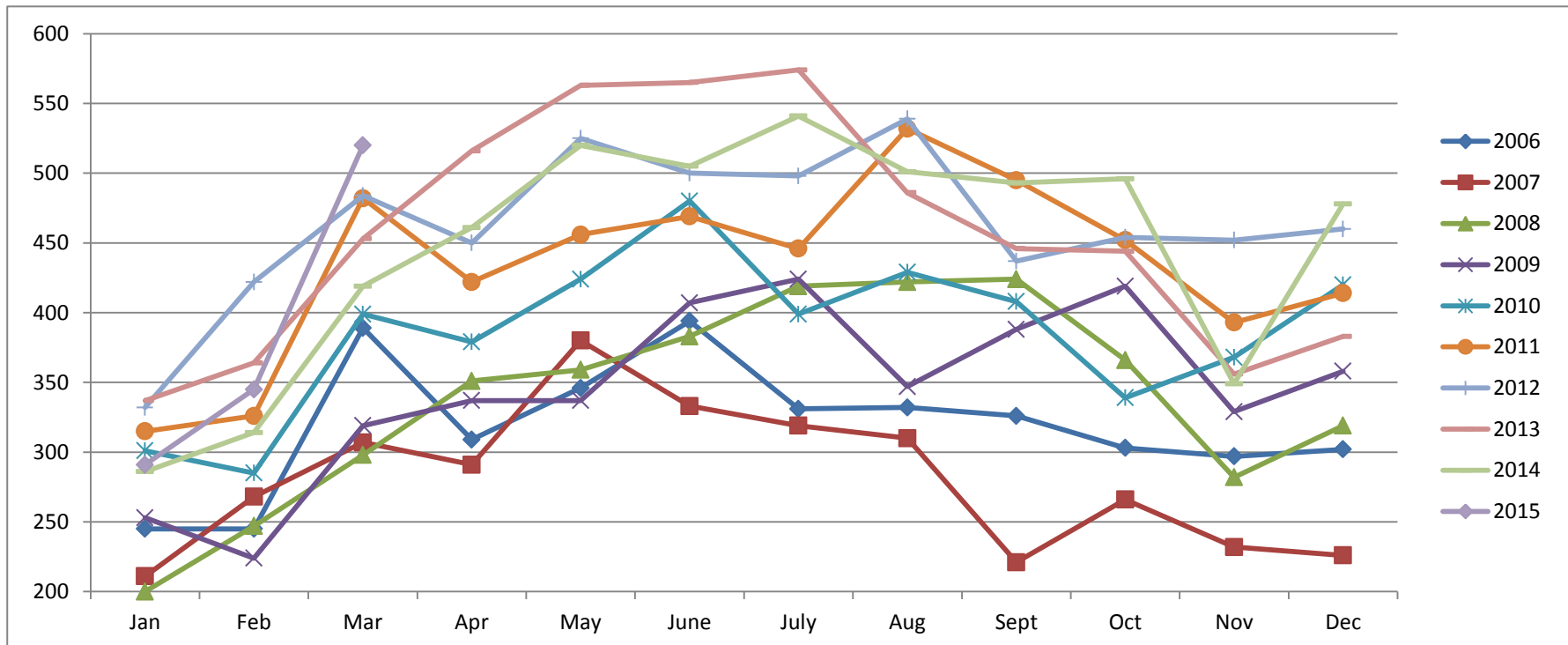
Area 12301, 12306, 12307, 12658, Auburn, Newcastle				Area 12302, 12303, 12305 MV,CV,CX,AG,Wei,BC				
			Last Year				Last Year	
Total Sales:	43		31	Total Sales:	24		18	
Pending Sales	54		42	Pending Sales	23		22	
Total Number of Listings	142		150	Total Number of Listings	105		106	
Median Sales Price	\$385,000		\$338,000	Median Sales Price	\$343,000		\$380,750	
Average Sales Price	\$425,568		\$426,032	Average Sales Price	\$349,951		\$385,083	
	<u>#Sold</u>	<u>Avg. Sales Price</u>	<u>Last Month</u>	<u>Last Year</u>	<u>#Sold</u>	<u>Avg. Sales Price</u>	<u>Last Month</u>	<u>Last Year</u>
Condos	5	\$129,600	\$65,775	\$138,429	0	\$0	\$0	\$0
Houses	43	\$425,568	\$484,229	\$426,032	24	\$349,951	\$378,767	\$385,083
2 Bedrooms	6	\$324,067	\$308,667	\$243,167	9	\$214,194	\$225,583	\$304,600
3 Bedrooms	23	\$364,961	\$402,061	\$421,500	8	\$434,500	\$330,146	\$407,214
4+ Bedrooms	14	\$568,638	\$659,097	\$594,429	7	\$427,868	\$689,000	\$426,333

Area 12677, 12765 Rocklin				Area 12304 Foresthill				
			Last Year				Last Year	
Total Sales:	89		71	Total Sales:	9		2	
Pending Sales	98		63	Pending Sales	12		2	
Total Number of Listings	133		123	Total Number of Listings	34		34	
Median Sales Price	\$415,000		\$390,000	Median Sales Price	\$258,000		\$283,000	
Average Sales Price	\$429,516		\$425,926	Average Sales Price	\$259,767		\$283,000	
	<u>#Sold</u>	<u>Avg. Sales Price</u>	<u>Last Month</u>	<u>Last Year</u>	<u>#Sold</u>	<u>Avg. Sales Price</u>	<u>Last Month</u>	<u>Last Year</u>
Condos	6	\$190,500	\$227,000	\$162,300	0	\$0	\$0	\$0
Houses	89	\$429,516	\$421,544	\$425,926	9	\$259,767	\$239,800	\$283,000
2 Bedrooms	7	\$357,886	\$354,000	\$377,625	3	\$234,500	\$0	\$0
3 Bedrooms	31	\$353,623	\$367,167	\$358,455	5	\$266,880	\$211,000	\$283,000
4+ Bedrooms	51	\$485,479	\$465,185	\$482,501	1	\$300,000	\$355,000	\$0

Placer County Association of REALTORS® (PCAR) Monthly Closed Escrows (2006-2015)

(Placer County Resale Homes)

	<i>Jan</i>	<i>Feb</i>	<i>Mar</i>	<i>Apr</i>	<i>May</i>	<i>June</i>	<i>July</i>	<i>Aug</i>	<i>Sept</i>	<i>Oct</i>	<i>Nov</i>	<i>Dec</i>
2006	245	245	389	309	346	394	331	332	326	303	297	302
2007	211	268	307	291	380	333	319	310	221	266	232	226
2008	200	247	298	351	359	383	419	422	424	366	282	319
2009	253	224	319	337	337	407	424	347	388	419	329	358
2010	301	285	399	379	424	480	399	429	408	339	368	420
2011	315	326	482	422	456	469	446	532	495	452	393	414
2012	332	422	484	450	525	500	498	539	437	454	452	460
2013	337	364	453	516	563	565	574	486	446	444	356	383
2014	286	314	419	461	520	505	541	501	493	496	349	478
2015	291	345	520									

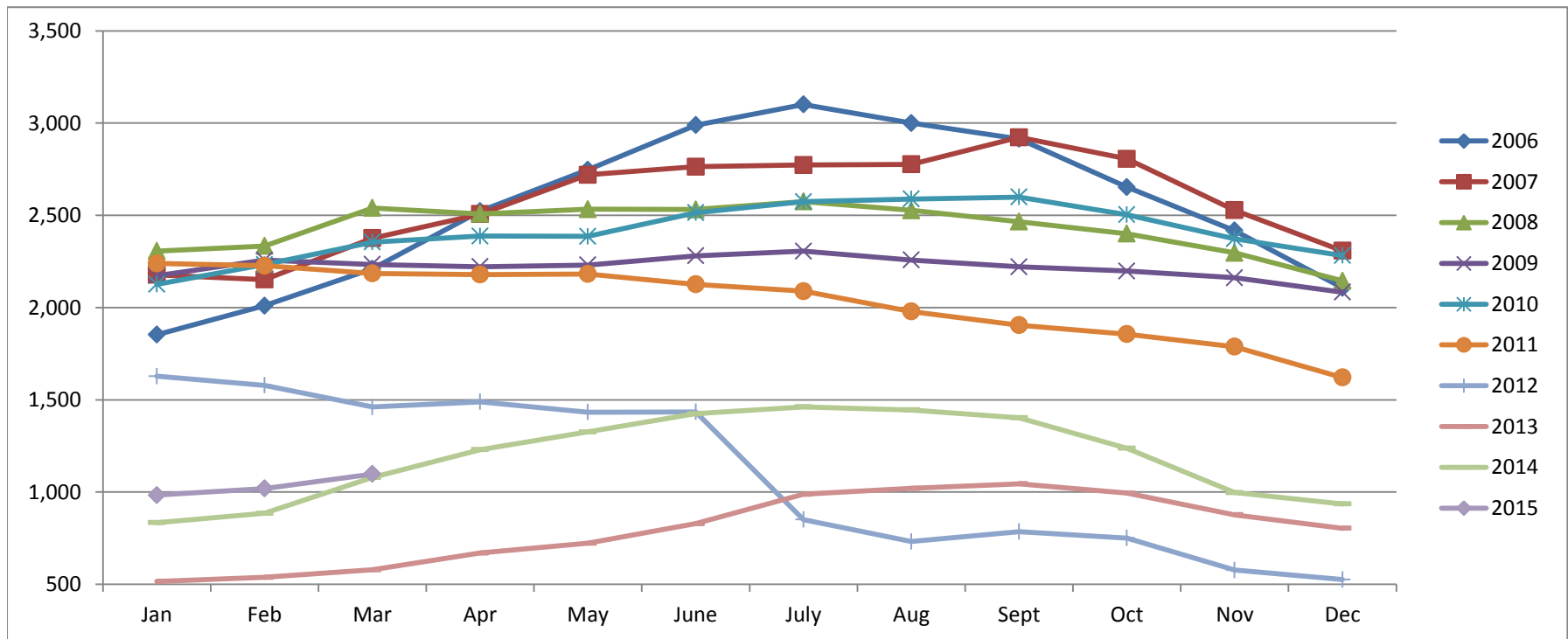


Based on MetroList™ Multiple Listing Service Data. Compiled monthly by PCAR, (916) 624-8271.

Placer County Association of REALTORS® (PCAR) Total Listing Inventory by Month (2006-2015)

(Placer County Resale Homes)

	Jan	Feb	Mar	Apr	May	June	July	Aug	Sept	Oct	Nov	Dec
2006	1,853	2,010	2,210	2,523	2,747	2,989	3,101	3,000	2,915	2,653	2,417	2,107
2007	2,178	2,152	2,376	2,507	2,720	2,764	2,773	2,777	2,923	2,806	2,528	2,308
2008	2,307	2,334	2,540	2,508	2,533	2,532	2,575	2,527	2,466	2,401	2,297	2,145
2009	2,173	2,257	2,234	2,222	2,231	2,281	2,306	2,258	2,221	2,198	2,162	2,084
2010	2,126	2,233	2,355	2,388	2,386	2,514	2,574	2,589	2,599	2,504	2,373	2,282
2011	2,239	2,227	2,185	2,179	2,182	2,126	2,089	1,979	1,905	1,856	1,788	1,621
2012	1,628	1,579	1,461	1,489	1,433	1,435	851	732	786	751	577	526
2013	516	538	579	670	723	829	988	1,020	1,045	994	877	804
2014	834	885	1,079	1,230	1,326	1,425	1,462	1,445	1,403	1,238	997	936
2015	984	1,019	1,098									

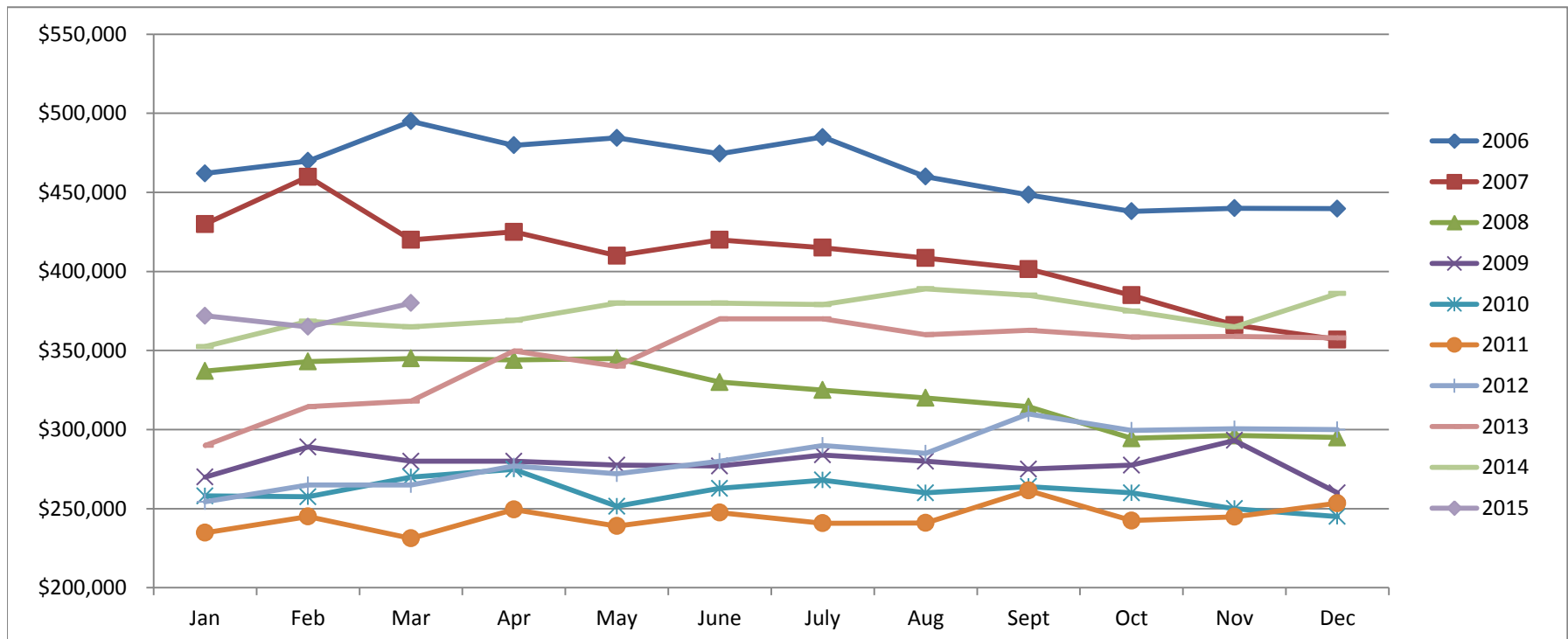


Based on MetroList™ Multiple Listing Service Data. Compiled monthly by PCAR, (916) 624-8271.

Placer County Association of REALTORS® (PCAR) Median Price for Single-Family Detached Homes (2006-2015)

(Placer County Resale Homes)

	Jan	Feb	Mar	Apr	May	June	July	Aug	Sept	Oct	Nov	Dec
2006	\$462,000	\$469,900	\$495,000	\$479,800	\$484,500	\$474,500	\$485,000	\$460,000	\$448,500	\$438,000	\$439,974	\$439,700
2007	\$430,000	\$459,900	\$419,950	\$425,000	\$410,000	\$420,000	\$415,000	\$408,500	\$401,500	\$385,000	\$366,087	\$356,928
2008	\$337,000	\$343,000	\$345,000	\$344,000	\$345,000	\$330,000	\$325,000	\$320,000	\$314,450	\$294,450	\$296,217	\$295,000
2009	\$270,000	\$289,000	\$280,000	\$280,000	\$277,500	\$277,000	\$283,950	\$280,000	\$275,000	\$277,500	\$293,116	\$260,000
2010	\$258,000	\$257,500	\$270,000	\$274,950	\$251,500	\$262,803	\$268,000	\$260,000	\$264,000	\$260,000	\$250,000	\$245,000
2011	\$234,750	\$245,000	\$231,250	\$249,450	\$239,000	\$247,500	\$240,750	\$241,000	\$261,500	\$242,500	\$244,900	\$253,450
2012	\$254,325	\$265,000	\$265,000	\$277,000	\$272,000	\$280,000	\$290,000	\$285,000	\$310,000	\$299,500	\$300,500	\$299,975
2013	\$290,000	\$314,500	\$318,000	\$349,700	\$340,000	\$370,000	\$370,000	\$360,000	\$362,750	\$358,500	\$359,000	\$358,000
2014	\$352,500	\$368,500	\$365,000	\$369,000	\$379,995	\$380,000	\$379,000	\$389,000	\$385,000	\$375,000	\$365,000	\$386,000
2015	\$372,000	\$365,000	\$380,000									

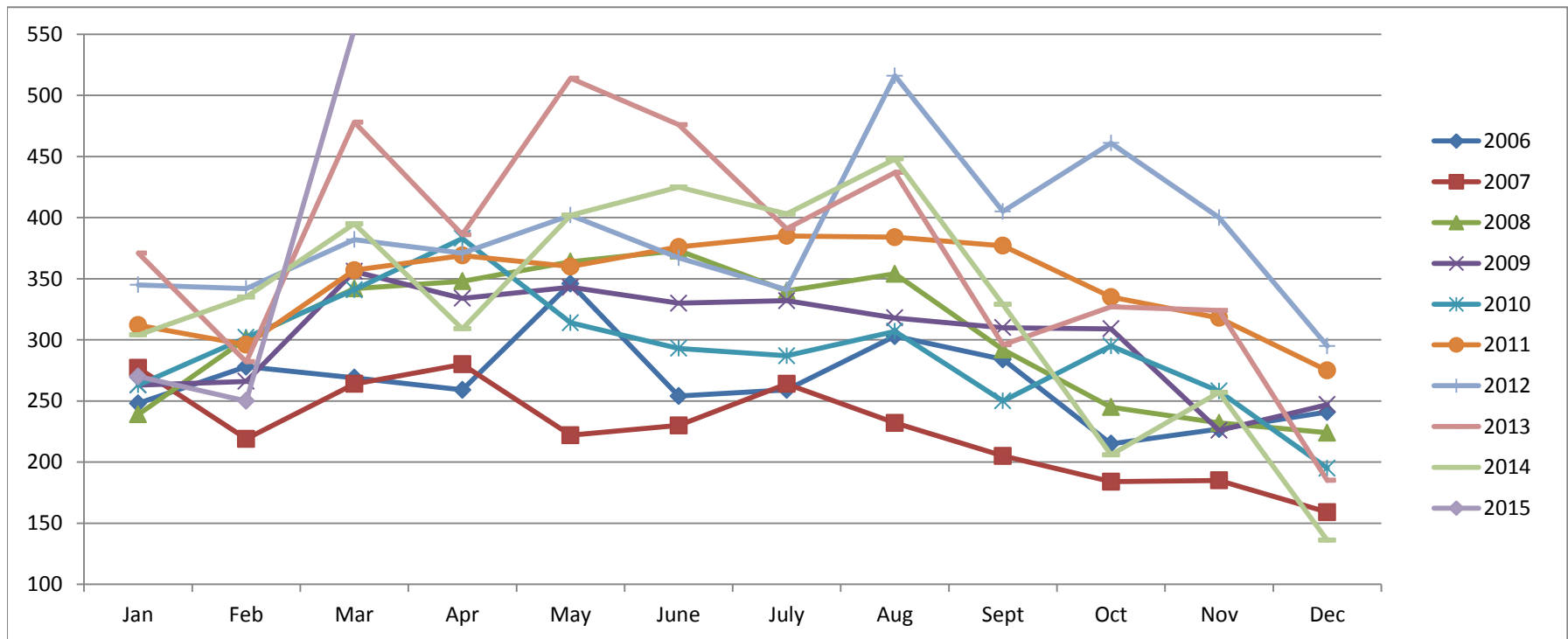


Based on MetroList™ Multiple Listing Service Data. Compiled monthly by PCAR, (916) 624-8271.

Placer County Association of REALTORS® (PCAR) Monthly New Sales Opened (2006-2015)

(Placer County Resale Homes)

	Jan	Feb	Mar	Apr	May	June	July	Aug	Sept	Oct	Nov	Dec
2006	248	278	269	259	346	254	259	303	284	215	227	241
2007	277	219	264	280	222	230	264	232	205	184	185	159
2008	239	301	342	348	364	373	340	354	292	245	232	224
2009	263	266	356	334	343	330	332	318	310	309	226	247
2010	263	302	341	383	314	293	287	307	250	295	258	195
2011	312	296	357	369	360	376	385	384	377	335	318	275
2012	345	342	382	371	402	367	341	516	405	461	400	295
2013	371	282	478	386	514	476	391	437	296	327	324	185
2014	304	335	395	309	402	425	403	448	329	206	257	136
2015	270	250	554									



Based on MetroList™ Multiple Listing Service Data. Compiled monthly by PCAR, (916) 624-8271.