

# MLS Statistics

March 2014 - Placer County

## RESIDENTIAL ONLY (Single Family Homes)

Preliminary Report

	Current Month	Last Month	% Change	Last Year	% Change
New Listings Published	575	555	3.6%	631	-8.9%
Listing Inventory	1,079	885	21.9%	579	86.4%
Number of New Escrows	395	335	17.9%	478	-17.4%
Number of Closed Escrows	419	314	33.4%	453	-7.5%
Median (1)	\$365,000	\$368,500	-0.9%	\$318,000	14.8%
Mean (2)	\$401,753	\$402,809	-0.3%	\$354,353	13.4%
Mode (3)	\$350,000 to \$399,999	\$300,000 to \$349,999	NA	\$250,000 to \$299,999	NA

## YEAR-TO-DATE STATISTICS

	01/01/14 to 03/31/14	01/01/14 to 02/28/14	01/01/13 to 03/31/13	% Change
New Listings Published	1,704	1,129	1,490	14.4%
Number of New Escrows Opened	1,034	639	724	42.8%
Number of Closed Escrows	1,025	604	1,162	-11.8%
Dollar Volume of Closed Escrows	\$409,043,611	\$240,008,795	\$406,370,874	0.7%
Median	\$365,000	\$361,750	\$308,500	18.3%
Mean	\$399,067	\$397,366	\$349,717	14.1%

## PRICE BRACKET OF SALES BASED ON FINAL SALES

Selling Price	Singlefamily Residential	Percent of Total	Condos	Resid. Income	Resid. Lots/Land
UNDER \$69,999	1	0.2%	1	0	4
\$70,000-\$79,999	0	0.0%	1	0	0
\$80,000-\$89,999	0	0.0%	0	0	3
\$90,000-\$99,999	0	0.0%	1	0	3
\$100,000-\$119,999	0	0.0%	2	0	1
\$120,000-\$139,999	0	0.0%	2	0	3
\$140,000-\$159,999	2	0.5%	4	0	2
\$160,000-\$179,999	5	1.2%	3	0	1
\$180,000-\$199,999	7	1.7%	3	0	2
\$200,000-\$249,999	36	8.6%	2	2	4
\$250,000-\$299,999	51	12.2%	1	1	1
\$300,000-\$349,999	79	18.9%	1	1	1
\$350,000-\$399,999	81	19.3%	0	0	0
\$400,000-\$449,999	45	10.7%	0	0	0
\$450,000-\$499,999	32	7.6%	0	1	0
\$500,000-\$749,999	66	15.8%	0	0	0
\$750,000-\$999,999	7	1.7%	0	0	0
OVER \$1,000,000	7	1.7%	0	0	0
<b>TOTAL</b>	<b>419</b>		<b>21</b>	<b>5</b>	<b>25</b>

### Selling Prices of Classes Listed Above

\$89,999 or less	2.1%
\$90,000-\$139,999	2.6%
\$140,000-\$179,999	3.6%
\$180,000-\$299,999	23.4%
\$300,000-\$399,999	34.7%
\$400,000-\$749,999	30.6%
\$750,000 and over	3.0%



## TYPE OF FINANCING OF UNITS SOLD

Financing	# of Units
Cash	98
Conventional	241
FHA	55
VA	33
Other	20

## LENGTH OF TIME ON MARKET

Days on Market	# of units	% of total
1-30 Days	276	61.7%
31-60 Days	86	19.2%
61-90 Days	31	6.9%
91-120 Days	22	4.9%
121+Days	32	7.2%

This representation is based in whole or part on data supplied by MetroList. MetroList does not guarantee nor is it in any way responsible for its accuracy. Data maintained by MetroList may not reflect all real estate activity in the market. All information provided is deemed reliable but is not guaranteed and should be independently verified.

1. Median: The midpoint at which an equal number of homes sold above and below this value.
2. Mean: The arithmetic average of the total number of residential sales divided into total residential sales dollar volume.
3. Mode: The price range within which the most number of homes were sold.



# Home Sales Report - March 2014

Number of New Listing: 575 Total Sales Reported Last Month: 314  
 Number of New Listings Last Month: 555 Sales Volume: \$168,334,416  
 Total Sales Reported: 419 Average Sales Price: \$401,753

*These figures are based on MetroList Multiple Listing Service Data. Compiled monthly by PCAR, (916) 624-8271*

ALL AREAS		# Sold	Avg. Sale Price	Last Month	Last Year	
Total Sales	419	Condos	21	\$162,095	\$179,368	\$127,390
Pending Sales	395	Houses	419	\$401,753	\$402,809	\$362,648
Total Number of Listings	1,079	2 Bedrooms	62	\$330,471	\$331,104	\$276,003
Median Sales Price	\$365,000	3 Bedrooms	190	\$355,170	\$320,221	\$297,011
Average Sales Price	\$401,753	4+ Bedrooms	167	\$481,215	\$493,598	\$456,628

## Breakdown By Areas

Area 12747, 12661, 12668, 12678 Roseville				Last Year	Area 12650, 12663 Loomis, Penryn				Last Year
Total Sales:	156			153	Total Sales:	19			22
Pending Sales	144			184	Pending Sales	11			15
Total Number of Listings	299			141	Total Number of Listings	55			47
Median Sales Price	\$352,500			\$310,000	Median Sales Price	\$474,900			\$407,500
Average Sales Price	\$372,224			\$330,368	Average Sales Price	\$550,329			\$472,947
	<u>#Sold</u>	<u>Avg. Sales Price</u>	<u>Last Month</u>			<u>#Sold</u>	<u>Avg. Sales Price</u>	<u>Last Month</u>	<u>Last Year</u>
Condos	6	\$177,333	\$131,571	\$136,708	Condos	0	\$0	\$0	\$279,500
Houses	156	\$372,224	\$375,175	\$330,368	Houses	19	\$550,329	\$559,500	\$472,947
2 Bedrooms	19	\$283,232	\$286,100	\$297,939	2 Bedrooms	2	\$190,750	\$440,000	\$286,000
3 Bedrooms	79	\$335,491	\$328,297	\$278,660	3 Bedrooms	3	\$390,883	\$390,667	\$437,731
4+ Bedrooms	58	\$451,409	\$441,248	\$395,647	4+ Bedrooms	11	\$702,677	\$786,000	\$591,762

Area 12746 Granite Bay				Last Year	Area 12201-12208 Lincoln				Last Year
Total Sales:	15			19	Total Sales:	105			102
Pending Sales	21			32	Pending Sales	87			107
Total Number of Listings	121			72	Total Number of Listings	190			94
Median Sales Price	\$532,000			\$489,000	Median Sales Price	\$350,000			\$307,500
Average Sales Price	\$525,266			\$574,632	Average Sales Price	\$382,534			\$329,535
	<u>#Sold</u>	<u>Avg. Sales Price</u>	<u>Last Month</u>	<u>Last Year</u>		<u>#Sold</u>	<u>Avg. Sales Price</u>	<u>Last Month</u>	<u>Last Year</u>
Condos	0	\$0	\$0	\$0	Condos	3	\$186,500	\$188,000	\$172,333
Houses	15	\$525,266	\$621,611	\$574,632	Houses	105	\$382,534	\$347,184	\$329,535
2 Bedrooms	0	\$0	\$499,000	\$0	2 Bedrooms	25	\$401,712	\$387,553	\$375,925
3 Bedrooms	6	\$393,583	\$337,450	\$436,625	3 Bedrooms	42	\$339,119	\$298,027	\$282,402
4+ Bedrooms	9	\$613,054	\$657,976	\$675,000	4+ Bedrooms	38	\$417,901	\$380,063	\$346,781

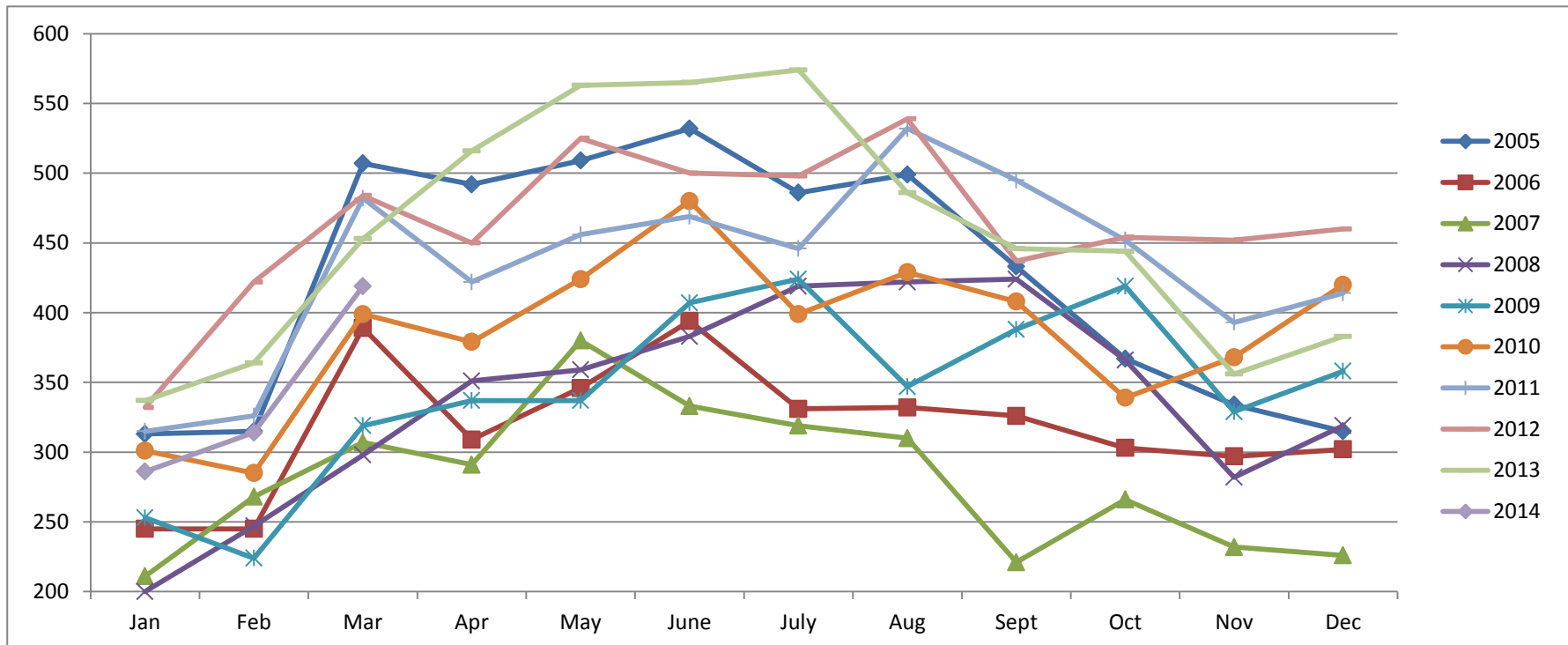
Area 12301, 12306, 12307, 12658, Auburn, Newcastle				Last Year	Area 12302, 12303, 12305 MV, GV, CX, AG, Wei, BC				Last Year
Total Sales:	31			53	Total Sales:	18			20
Pending Sales	42			38	Pending Sales	22			35
Total Number of Listings	150			93	Total Number of Listings	106			61
Median Sales Price	\$338,000			\$313,000	Median Sales Price	\$380,750			\$242,500
Average Sales Price	\$426,032			\$371,240	Average Sales Price	\$385,083			\$263,325
	<u>#Sold</u>	<u>Avg. Sales Price</u>	<u>Last Month</u>	<u>Last Year</u>		<u>#Sold</u>	<u>Avg. Sales Price</u>	<u>Last Month</u>	<u>Last Year</u>
Condos	7	\$138,429	\$0	\$93,000	Condos	0	\$0	\$0	\$0
Houses	31	\$426,032	\$412,575	\$371,240	Houses	18	\$385,083	\$307,335	\$263,325
2 Bedrooms	6	\$243,167	\$226,875	\$246,515	2 Bedrooms	5	\$304,600	\$161,933	\$0
3 Bedrooms	18	\$421,500	\$319,000	\$331,542	3 Bedrooms	7	\$407,214	\$298,510	\$263,139
4+ Bedrooms	7	\$594,429	\$692,817	\$518,268	4+ Bedrooms	6	\$426,333	\$403,400	\$265,000

Area 12677, 12765 Rocklin				Last Year	Area 12304 Foresthill				Last Year
Total Sales:	71			73	Total Sales:	2			12
Pending Sales	63			54	Pending Sales	2			12
Total Number of Listings	123			52	Total Number of Listings	34			19
Median Sales Price	\$390,000			\$360,000	Median Sales Price	\$283,000			\$201,000
Average Sales Price	\$425,926			\$388,939	Average Sales Price	\$283,000			\$202,967
	<u>#Sold</u>	<u>Avg. Sales Price</u>	<u>Last Month</u>	<u>Last Year</u>		<u>#Sold</u>	<u>Avg. Sales Price</u>	<u>Last Month</u>	<u>Last Year</u>
Condos	5	\$162,300	\$211,100	\$147,550	Condos	0	\$0	\$0	\$0
Houses	71	\$425,926	\$413,608	\$388,939	Houses	2	\$283,000	\$307,000	\$202,967
2 Bedrooms	4	\$377,625	\$318,000	\$324,225	2 Bedrooms	0	\$0	\$435,000	\$126,433
3 Bedrooms	29	\$358,455	\$331,521	\$299,205	3 Bedrooms	2	\$283,000	\$227,000	\$233,288
4+ Bedrooms	38	\$482,501	\$460,954	\$460,468	4+ Bedrooms	0	\$0	\$499,000	\$190,000

# Placer County Association of REALTORS® (PCAR) Monthly Closed Escrows (2005-2014)

(Placer County Resale Homes)

	<i>Jan</i>	<i>Feb</i>	<i>Mar</i>	<i>Apr</i>	<i>May</i>	<i>June</i>	<i>July</i>	<i>Aug</i>	<i>Sept</i>	<i>Oct</i>	<i>Nov</i>	<i>Dec</i>
<b>2005</b>	313	315	507	492	509	532	486	499	433	367	334	315
<b>2006</b>	245	245	389	309	346	394	331	332	326	303	297	302
<b>2007</b>	211	268	307	291	380	333	319	310	221	266	232	226
<b>2008</b>	200	247	298	351	359	383	419	422	424	366	282	319
<b>2009</b>	253	224	319	337	337	407	424	347	388	419	329	358
<b>2010</b>	301	285	399	379	424	480	399	429	408	339	368	420
<b>2011</b>	315	326	482	422	456	469	446	532	495	452	393	414
<b>2012</b>	332	422	484	450	525	500	498	539	437	454	452	460
<b>2013</b>	337	364	453	516	563	565	574	486	446	444	356	383
<b>2014</b>	286	314	419									

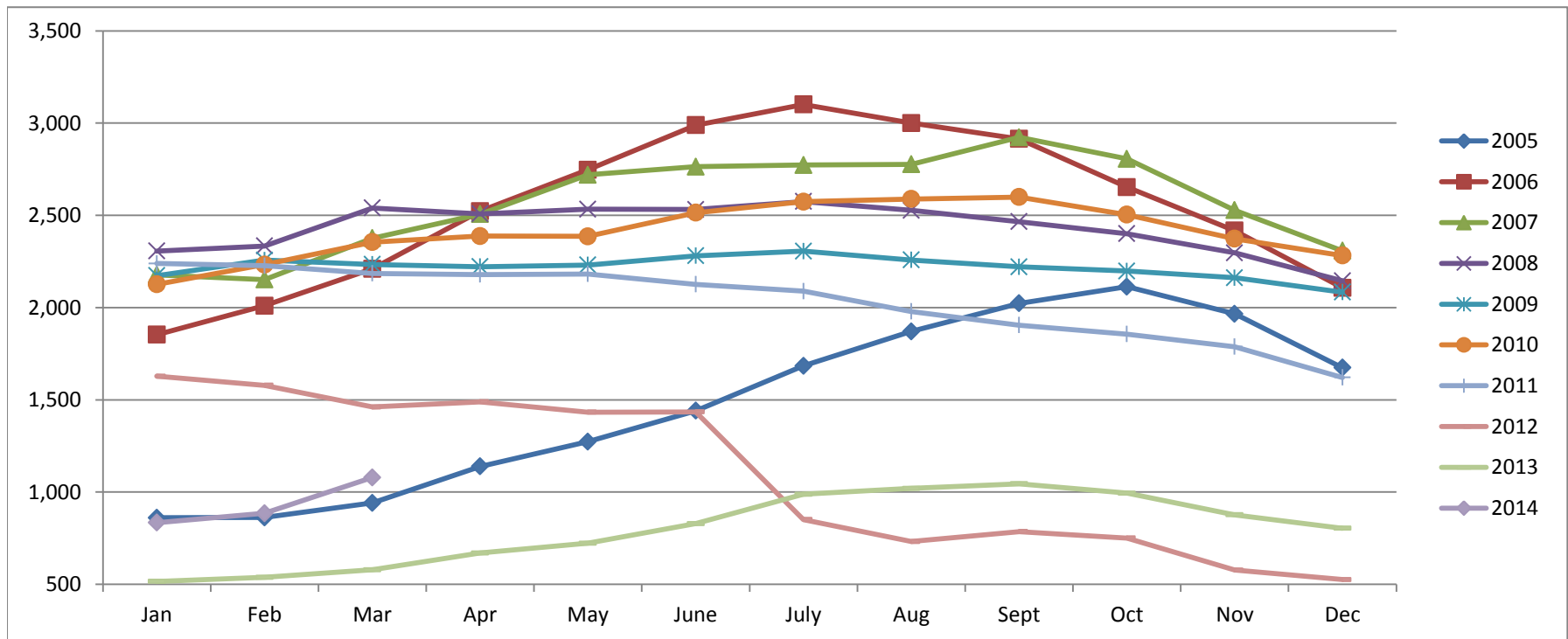


Based on MetroList™ Multiple Listing Service Data. Compiled monthly by PCAR, (916) 624-8271.

# Placer County Association of REALTORS® (PCAR) Total Listing Inventory by Month (2005-2014)

(Placer County Resale Homes)

	Jan	Feb	Mar	Apr	May	June	July	Aug	Sept	Oct	Nov	Dec
<b>2005</b>	861	862	941	1,139	1,273	1,441	1,684	1,871	2,023	2,113	1,966	1,674
<b>2006</b>	1,853	2,010	2,210	2,523	2,747	2,989	3,101	3,000	2,915	2,653	2,417	2,107
<b>2007</b>	2,178	2,152	2,376	2,507	2,720	2,764	2,773	2,777	2,923	2,806	2,528	2,308
<b>2008</b>	2,307	2,334	2,540	2,508	2,533	2,532	2,575	2,527	2,466	2,401	2,297	2,145
<b>2009</b>	2,173	2,257	2,234	2,222	2,231	2,281	2,306	2,258	2,221	2,198	2,162	2,084
<b>2010</b>	2,126	2,233	2,355	2,388	2,386	2,514	2,574	2,589	2,599	2,504	2,373	2,282
<b>2011</b>	2,239	2,227	2,185	2,179	2,182	2,126	2,089	1,979	1,905	1,856	1,788	1,621
<b>2012</b>	1,628	1,579	1,461	1,489	1,433	1,435	851	732	786	751	577	526
<b>2013</b>	516	538	579	670	723	829	988	1,020	1,045	994	877	804
<b>2014</b>	834	885	1,079									

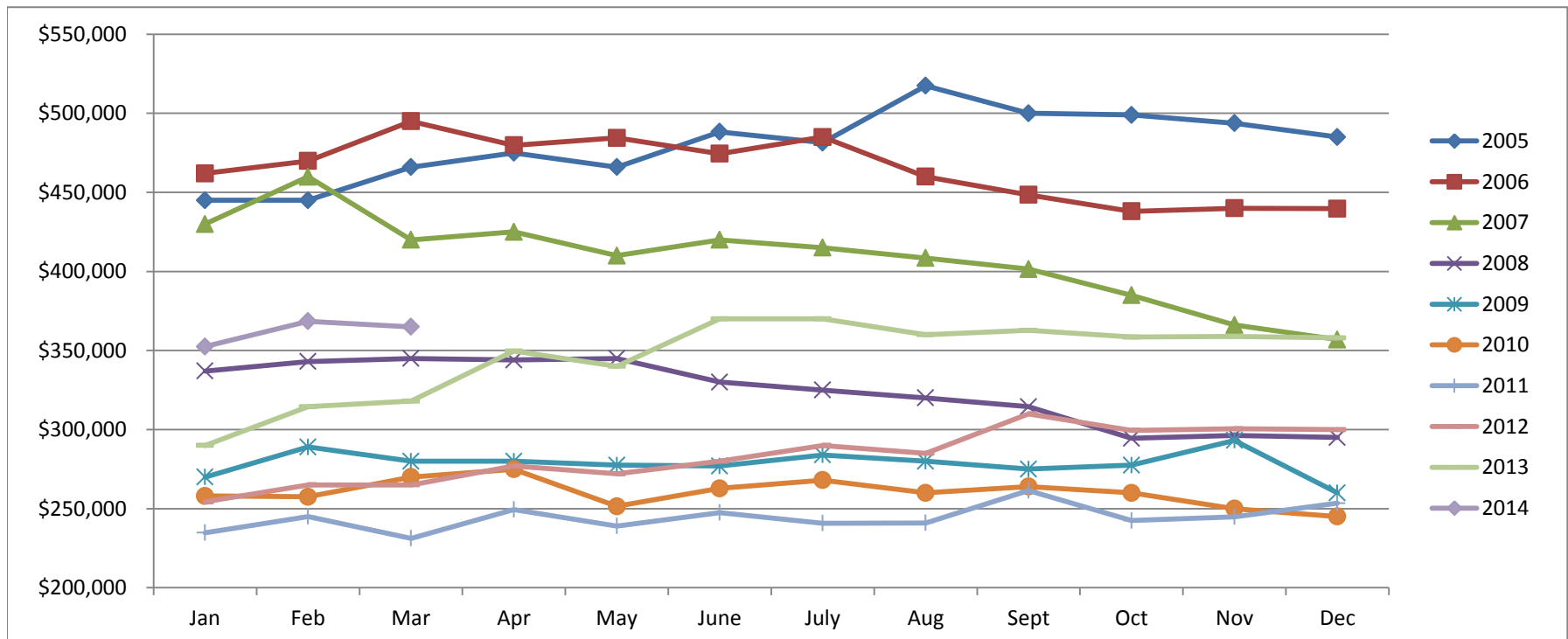


Based on MetroList™ Multiple Listing Service Data. Compiled monthly by PCAR, (916) 624-8271.

# Placer County Association of REALTORS® (PCAR) Median Price for Single-Family Detached Homes (2005-2014)

(Placer County Resale Homes)

	Jan	Feb	Mar	Apr	May	June	July	Aug	Sept	Oct	Nov	Dec
<b>2005</b>	\$445,000	\$445,000	\$466,000	\$475,000	\$466,000	\$488,250	\$481,500	\$517,500	\$500,000	\$499,000	\$493,750	\$485,000
<b>2006</b>	\$462,000	\$469,900	\$495,000	\$479,800	\$484,500	\$474,500	\$485,000	\$460,000	\$448,500	\$438,000	\$439,974	\$439,700
<b>2007</b>	\$430,000	\$459,900	\$419,950	\$425,000	\$410,000	\$420,000	\$415,000	\$408,500	\$401,500	\$385,000	\$366,087	\$356,928
<b>2008</b>	\$337,000	\$343,000	\$345,000	\$344,000	\$345,000	\$330,000	\$325,000	\$320,000	\$314,450	\$294,450	\$296,217	\$295,000
<b>2009</b>	\$270,000	\$289,000	\$280,000	\$280,000	\$277,500	\$277,000	\$283,950	\$280,000	\$275,000	\$277,500	\$293,116	\$260,000
<b>2010</b>	\$258,000	\$257,500	\$270,000	\$274,950	\$251,500	\$262,803	\$268,000	\$260,000	\$264,000	\$260,000	\$250,000	\$245,000
<b>2011</b>	\$234,750	\$245,000	\$231,250	\$249,450	\$239,000	\$247,500	\$240,750	\$241,000	\$261,500	\$242,500	\$244,900	\$253,450
<b>2012</b>	\$254,325	\$265,000	\$265,000	\$277,000	\$272,000	\$280,000	\$290,000	\$285,000	\$310,000	\$299,500	\$300,500	\$299,975
<b>2013</b>	\$290,000	\$314,500	\$318,000	\$349,700	\$340,000	\$370,000	\$370,000	\$360,000	\$362,750	\$358,500	\$359,000	\$358,000
<b>2014</b>	\$352,500	\$368,500	\$365,000									

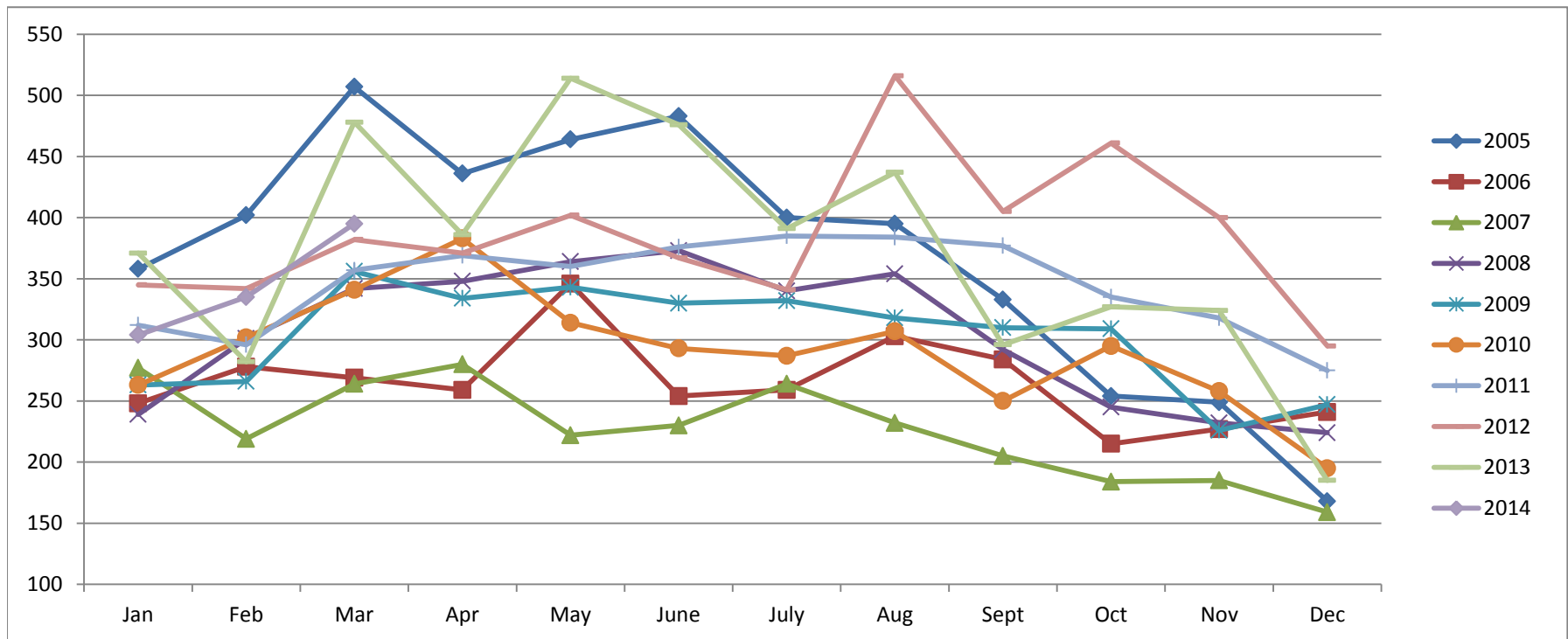


Based on MetroList™ Multiple Listing Service Data. Compiled monthly by PCAR, (916) 624-8271.

# Placer County Association of REALTORS® (PCAR) Monthly New Sales Opened (2005-2014)

(Placer County Resale Homes)

	Jan	Feb	Mar	Apr	May	June	July	Aug	Sept	Oct	Nov	Dec
<b>2005</b>	358	402	507	436	464	483	400	395	333	254	249	168
<b>2006</b>	248	278	269	259	346	254	259	303	284	215	227	241
<b>2007</b>	277	219	264	280	222	230	264	232	205	184	185	159
<b>2008</b>	239	301	342	348	364	373	340	354	292	245	232	224
<b>2009</b>	263	266	356	334	343	330	332	318	310	309	226	247
<b>2010</b>	263	302	341	383	314	293	287	307	250	295	258	195
<b>2011</b>	312	296	357	369	360	376	385	384	377	335	318	275
<b>2012</b>	345	342	382	371	402	367	341	516	405	461	400	295
<b>2013</b>	371	282	478	386	514	476	391	437	296	327	324	185
<b>2014</b>	304	335	395									



Based on MetroList™ Multiple Listing Service Data. Compiled monthly by PCAR, (916) 624-8271.