

# MLS Statistics

March 2013 - Placer County

## RESIDENTIAL ONLY (Single Family Homes)

Preliminary Report

	Current Month	Last Month	% Change	Last Year	% Change
New Listings Published	631	477	32.3%	544	16.0%
Listing Inventory	579	538	7.6%	1,461	-60.4%
Number of New Escrows	478	282	69.5%	382	25.1%
Number of Closed Escrows	453	364	24.5%	484	-6.4%
Median (1)	\$318,000	\$314,500	1.1%	\$265,000	20.0%
Mean (2)	\$354,353	\$362,648	-2.3%	\$304,533	16.4%
Mode (3)	\$250,000 to \$299,999	\$250,000 to \$299,999	NA	\$200,000 to \$249,999	NA

## YEAR-TO-DATE STATISTICS

	01/01/13 to 03/31/13	01/01/13 to 02/28/13	01/01/12 to 03/31/12	% Change
New Listings Published	1,490	859	1,524	-2.2%
Number of New Escrows Opened	724	653	1,079	-32.9%
Number of Closed Escrows	1,162	707	1,238	-6.1%
Dollar Volume of Closed Escrows	\$406,370,874	\$245,288,806	\$357,830,371	13.6%
Median	\$308,500	\$300,000	\$257,500	19.8%
Mean	\$349,717	\$346,943	\$288,716	21.1%

## PRICE BRACKET OF SALES BASED ON FINAL SALES

Selling Price	Singlefamily Residential	Percent of Total	Condos	Resid. Income	Resid. Lots/Land
UNDER \$69,999	0	0.0%	1	0	3
\$70,000-\$79,999	1	0.2%	1	0	2
\$80,000-\$89,999	0	0.0%	2	0	0
\$90,000-\$99,999	1	0.2%	1	1	2
\$100,000-\$119,999	1	0.2%	6	0	1
\$120,000-\$139,999	3	0.7%	4	0	1
\$140,000-\$159,999	11	2.4%	8	0	2
\$160,000-\$179,999	17	3.8%	3	0	4
\$180,000-\$199,999	14	3.1%	2	0	0
\$200,000-\$249,999	63	13.9%	1	0	1
\$250,000-\$299,999	86	19.0%	2	0	0
\$300,000-\$349,999	71	15.7%	0	1	0
\$350,000-\$399,999	62	13.7%	0	0	1
\$400,000-\$449,999	33	7.3%	0	0	0
\$450,000-\$499,999	28	6.2%	0	0	0
\$500,000-\$749,999	50	11.0%	0	0	0
\$750,000-\$999,999	7	1.5%	0	0	0
OVER \$1,000,000	5	1.1%	0	0	1
<b>TOTAL</b>	<b>453</b>		<b>31</b>	<b>2</b>	<b>18</b>

### Selling Prices of Classes Listed Above

\$89,999 or less	2.0%
\$90,000-\$139,999	4.2%
\$140,000-\$179,999	8.9%
\$180,000-\$299,999	33.5%
\$300,000-\$399,999	26.8%
\$400,000-\$749,999	22.0%
\$750,000 and over	2.6%



## TYPE OF FINANCING OF UNITS SOLD

Financing	# of Units
Cash	141
Conventional	231
FHA	63
VA	29
Other	25

## LENGTH OF TIME ON MARKET

Days on Market	# of units	% of total
1-30 Days	361	73.8%
31-60 Days	57	11.7%
61-90 Days	23	4.7%
91-120 Days	15	3.1%
121+Days	33	6.7%

This representation is based in whole or part on data supplied by MetroList. MetroList does not guarantee nor is it in any way responsible for its accuracy. Data maintained by MetroList may not reflect all real estate activity in the market. All information provided is deemed reliable but is not guaranteed and should be independently verified.

1. Median: The midpoint at which an equal number of homes sold above and below this value.
2. Mean: The arithmetic average of the total number of residential sales divided into total residential sales dollar volume.
3. Mode: The price range within which the most number of homes were sold.



# Home Sales Report - March 2013

Number of New Listing: 631 Total Sales Reported Last Month: 364  
 Number of New Listings Last Month: 477 Sales Volume: \$160,522,068  
 Total Sales Reported: 453 Average Sales Price: \$354,353

*These figures are based on MetroList Multiple Listing Service Data. Compiled monthly by PCAR, (916) 624-8271*

ALL AREAS		# Sold	Avg. Sale Price	Last Month	Last Year	
Total Sales	453	Condos	31	\$144,729	\$127,390	\$106,651
Pending Sales	478	Houses	453	\$354,353	\$362,648	\$314,533
Total Number of Listings	579	2 Bedrooms	64	\$313,716	\$276,003	\$247,480
Median Sales Price	\$318,000	3 Bedrooms	216	\$302,641	\$297,011	\$239,448
Average Sales Price	\$354,353	4+ Bedrooms	173	\$433,952	\$456,628	\$388,095

## Breakdown By Areas

Area 12747, 12661, 12668, 12678 Roseville				Last Year	Area 12650, 12663 Loomis, Penryn				Last Year
Total Sales:	153			198	Total Sales:	22			14
Pending Sales	184			151	Pending Sales	15			10
Total Number of Listings	141			491	Total Number of Listings	47			67
Median Sales Price	\$310,000			\$265,000	Median Sales Price	\$407,500			\$438,000
Average Sales Price	\$330,368			\$274,863	Average Sales Price	\$472,947			\$552,257
	<u>#Sold</u>	<u>Avg. Sales Price</u>	<u>Last Month</u>			<u>#Sold</u>	<u>Avg. Sales Price</u>	<u>Last Month</u>	<u>Last Year</u>
Condos	12	\$136,708	\$123,885	\$104,922	Condos	1	\$279,500	\$0	\$0
Houses	153	\$330,368	\$335,454	\$274,863	Houses	22	\$472,947	\$785,410	\$552,257
2 Bedrooms	22	\$297,939	\$213,375	\$219,665	2 Bedrooms	2	\$286,000	\$0	\$0
3 Bedrooms	67	\$278,660	\$287,935	\$241,155	3 Bedrooms	13	\$437,731	\$467,517	\$263,886
4+ Bedrooms	64	\$395,647	\$396,531	\$319,373	4+ Bedrooms	7	\$591,762	\$1,262,250	\$840,629

Area 12746 Granite Bay				Last Year	Area 12201-12208 Lincoln				Last Year
Total Sales:	19			25	Total Sales:	102			98
Pending Sales	32			18	Pending Sales	107			81
Total Number of Listings	72			110	Total Number of Listings	94			253
Median Sales Price	\$489,000			\$510,000	Median Sales Price	\$307,500			\$250,000
Average Sales Price	\$574,632			\$623,066	Average Sales Price	\$329,535			\$271,338
	<u>#Sold</u>	<u>Avg. Sales Price</u>	<u>Last Month</u>	<u>Last Year</u>		<u>#Sold</u>	<u>Avg. Sales Price</u>	<u>Last Month</u>	<u>Last Year</u>
Condos	0	\$0	\$0	\$0	Condos	3	\$172,333	\$143,900	\$122,431
Houses	19	\$574,632	\$689,766	\$623,066	Houses	102	\$329,535	\$302,790	\$271,338
2 Bedrooms	0	\$0	\$145,000	\$0	2 Bedrooms	28	\$375,925	\$330,953	\$304,592
3 Bedrooms	8	\$436,625	\$472,929	\$344,964	3 Bedrooms	40	\$282,402	\$273,733	\$225,063
4+ Bedrooms	11	\$675,000	\$804,357	\$731,217	4+ Bedrooms	34	\$346,781	\$327,063	\$298,014

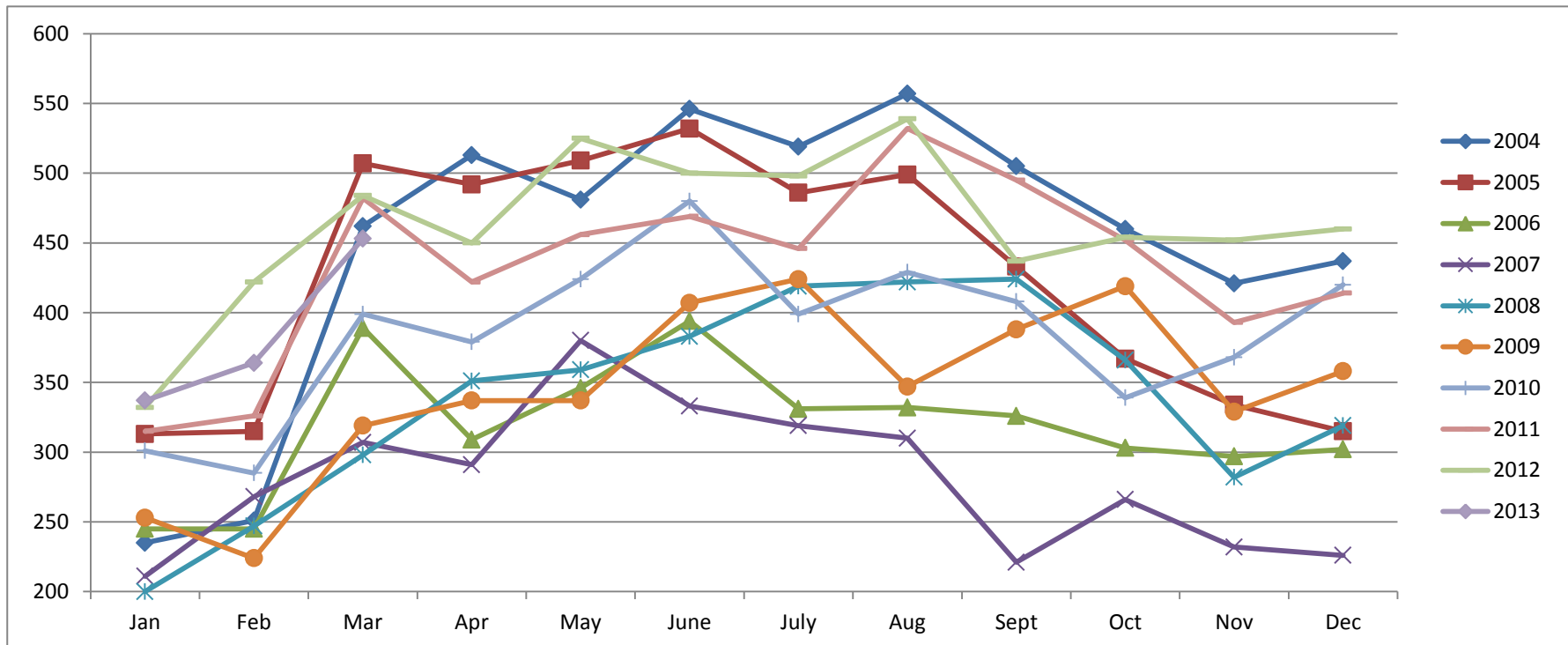
Area 12301, 12306, 12307, 12658, Auburn, Newcastle				Last Year	Area 12302, 12303, 12305 MV, GV, CX, AG, Wei, BC				Last Year
Total Sales:	53			43	Total Sales:	20			34
Pending Sales	38			36	Pending Sales	35			13
Total Number of Listings	93			181	Total Number of Listings	61			121
Median Sales Price	\$313,000			\$279,900	Median Sales Price	\$242,500			\$221,500
Average Sales Price	\$371,240			\$299,083	Average Sales Price	\$263,325			\$258,667
	<u>#Sold</u>	<u>Avg. Sales Price</u>	<u>Last Month</u>	<u>Last Year</u>		<u>#Sold</u>	<u>Avg. Sales Price</u>	<u>Last Month</u>	<u>Last Year</u>
Condos	3	\$93,000	\$88,283	\$83,267	Condos	0	\$0	\$0	\$0
Houses	53	\$371,240	\$307,923	\$299,083	Houses	20	\$263,325	\$310,833	\$258,667
2 Bedrooms	6	\$246,515	\$246,000	\$256,917	2 Bedrooms	0	\$0	\$136,200	\$121,707
3 Bedrooms	33	\$331,542	\$263,850	\$247,033	3 Bedrooms	18	\$263,139	\$333,447	\$250,101
4+ Bedrooms	14	\$518,268	\$393,000	\$416,915	4+ Bedrooms	2	\$265,000	\$417,625	\$469,833

Area 12677, 12765 Rocklin				Last Year	Area 12304 Foresthill				Last Year
Total Sales:	73			57	Total Sales:	12			14
Pending Sales	54			68	Pending Sales	12			5
Total Number of Listings	52			188	Total Number of Listings	19			48
Median Sales Price	\$360,000			\$280,500	Median Sales Price	\$201,000			\$181,500
Average Sales Price	\$388,939			\$312,933	Average Sales Price	\$202,967			\$244,864
	<u>#Sold</u>	<u>Avg. Sales Price</u>	<u>Last Month</u>	<u>Last Year</u>		<u>#Sold</u>	<u>Avg. Sales Price</u>	<u>Last Month</u>	<u>Last Year</u>
Condos	12	\$147,550	\$154,167	\$118,833	Condos	0	\$0	\$0	\$0
Houses	73	\$388,939	\$362,800	\$312,933	Houses	12	\$202,967	\$203,488	\$244,864
2 Bedrooms	4	\$324,225	\$349,000	\$287,500	2 Bedrooms	3	\$126,433	\$0	\$0
3 Bedrooms	29	\$299,205	\$306,646	\$227,650	3 Bedrooms	8	\$233,288	\$160,750	\$172,789
4+ Bedrooms	40	\$460,468	\$393,925	\$367,104	4+ Bedrooms	1	\$190,000	\$331,700	\$374,600

# Placer County Association of REALTORS® (PCAR) Monthly Closed Escrows (2004-2013)

(Placer County Resale Homes)

	Jan	Feb	Mar	Apr	May	June	July	Aug	Sept	Oct	Nov	Dec
<b>2004</b>	235	251	462	513	481	546	519	557	505	460	421	437
<b>2005</b>	313	315	507	492	509	532	486	499	433	367	334	315
<b>2006</b>	245	245	389	309	346	394	331	332	326	303	297	302
<b>2007</b>	211	268	307	291	380	333	319	310	221	266	232	226
<b>2008</b>	200	247	298	351	359	383	419	422	424	366	282	319
<b>2009</b>	253	224	319	337	337	407	424	347	388	419	329	358
<b>2010</b>	301	285	399	379	424	480	399	429	408	339	368	420
<b>2011</b>	315	326	482	422	456	469	446	532	495	452	393	414
<b>2012</b>	332	422	484	450	525	500	498	539	437	454	452	460
<b>2013</b>	337	364	453									

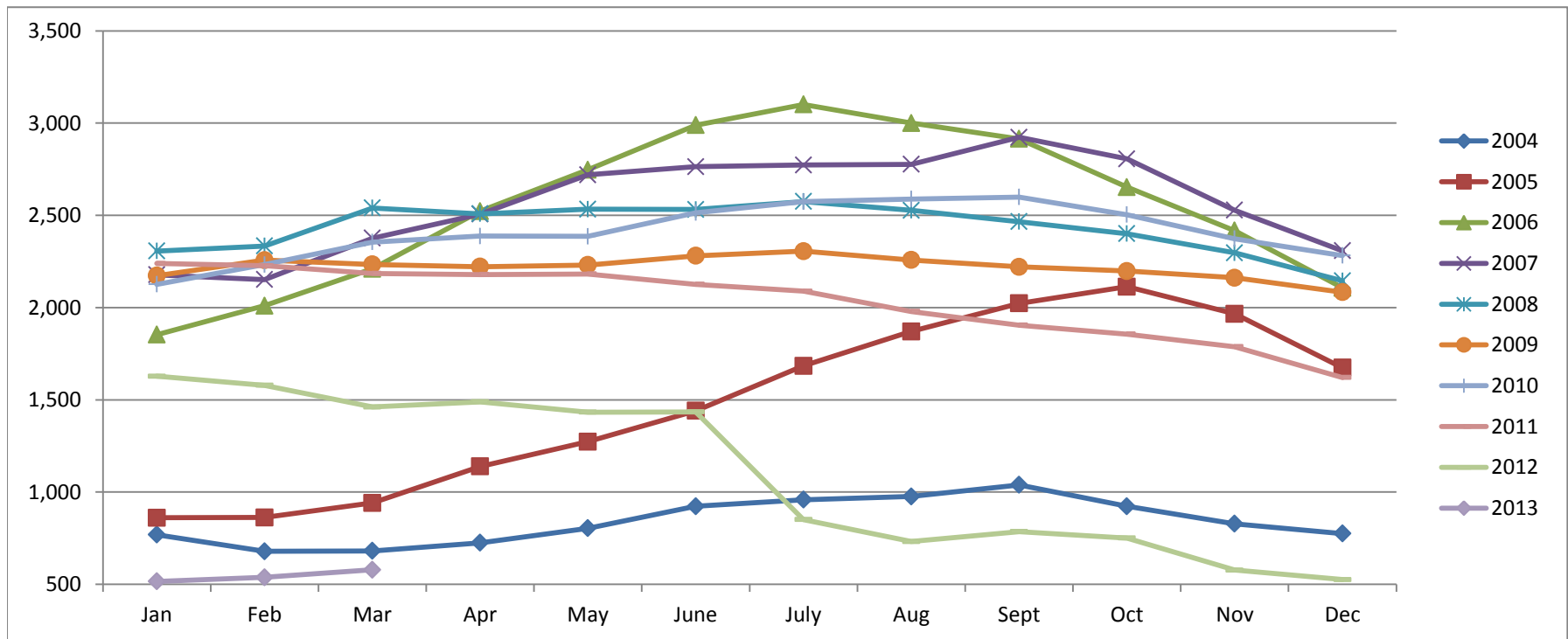


Based on MetroList™ Multiple Listing Service Data. Compiled monthly by PCAR, (916) 624-8271.

# Placer County Association of REALTORS® (PCAR) Total Listing Inventory by Month (2004-2013)

(Placer County Resale Homes)

	Jan	Feb	Mar	Apr	May	June	July	Aug	Sept	Oct	Nov	Dec
2004	769	679	681	725	804	923	959	976	1,039	923	828	775
2005	861	862	941	1,139	1,273	1,441	1,684	1,871	2,023	2,113	1,966	1,674
2006	1,853	2,010	2,210	2,523	2,747	2,989	3,101	3,000	2,915	2,653	2,417	2,107
2007	2,178	2,152	2,376	2,507	2,720	2,764	2,773	2,777	2,923	2,806	2,528	2,308
2008	2,307	2,334	2,540	2,508	2,533	2,532	2,575	2,527	2,466	2,401	2,297	2,145
2009	2,173	2,257	2,234	2,222	2,231	2,281	2,306	2,258	2,221	2,198	2,162	2,084
2010	2,126	2,233	2,355	2,388	2,386	2,514	2,574	2,589	2,599	2,504	2,373	2,282
2011	2,239	2,227	2,185	2,179	2,182	2,126	2,089	1,979	1,905	1,856	1,788	1,621
2012	1,628	1,579	1,461	1,489	1,433	1,435	851	732	786	751	577	526
2013	516	538	579									

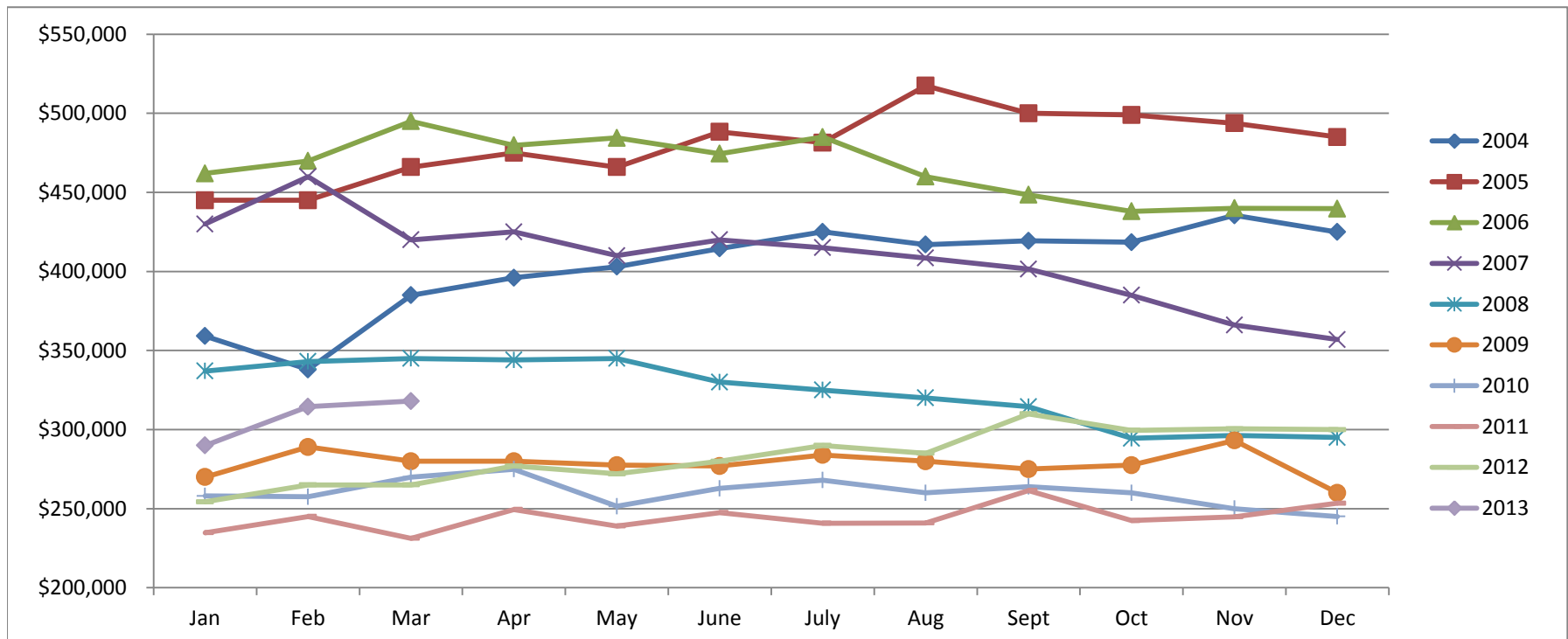


Based on MetroList™ Multiple Listing Service Data. Compiled monthly by PCAR, (916) 624-8271.

# Placer County Association of REALTORS® (PCAR) Median Price for Single-Family Detached Homes (2004-2013)

(Placer County Resale Homes)

	Jan	Feb	Mar	Apr	May	June	July	Aug	Sept	Oct	Nov	Dec
<b>2004</b>	\$359,100	\$338,000	\$385,000	\$396,000	\$403,000	\$414,500	\$425,000	\$417,000	\$419,350	\$418,500	\$435,500	\$424,975
<b>2005</b>	\$445,000	\$445,000	\$466,000	\$475,000	\$466,000	\$488,250	\$481,500	\$517,500	\$500,000	\$499,000	\$493,750	\$485,000
<b>2006</b>	\$462,000	\$469,900	\$495,000	\$479,800	\$484,500	\$474,500	\$485,000	\$460,000	\$448,500	\$438,000	\$439,974	\$439,700
<b>2007</b>	\$430,000	\$459,900	\$419,950	\$425,000	\$410,000	\$420,000	\$415,000	\$408,500	\$401,500	\$385,000	\$366,087	\$356,928
<b>2008</b>	\$337,000	\$343,000	\$345,000	\$344,000	\$345,000	\$330,000	\$325,000	\$320,000	\$314,450	\$294,450	\$296,217	\$295,000
<b>2009</b>	\$270,000	\$289,000	\$280,000	\$280,000	\$277,500	\$277,000	\$283,950	\$280,000	\$275,000	\$277,500	\$293,116	\$260,000
<b>2010</b>	\$258,000	\$257,500	\$270,000	\$274,950	\$251,500	\$262,803	\$268,000	\$260,000	\$264,000	\$260,000	\$250,000	\$245,000
<b>2011</b>	\$234,750	\$245,000	\$231,250	\$249,450	\$239,000	\$247,500	\$240,750	\$241,000	\$261,500	\$242,500	\$244,900	\$253,450
<b>2012</b>	\$254,325	\$265,000	\$265,000	\$277,000	\$272,000	\$280,000	\$290,000	\$285,000	\$310,000	\$299,500	\$300,500	\$299,975
<b>2013</b>	\$290,000	\$314,500	\$318,000									

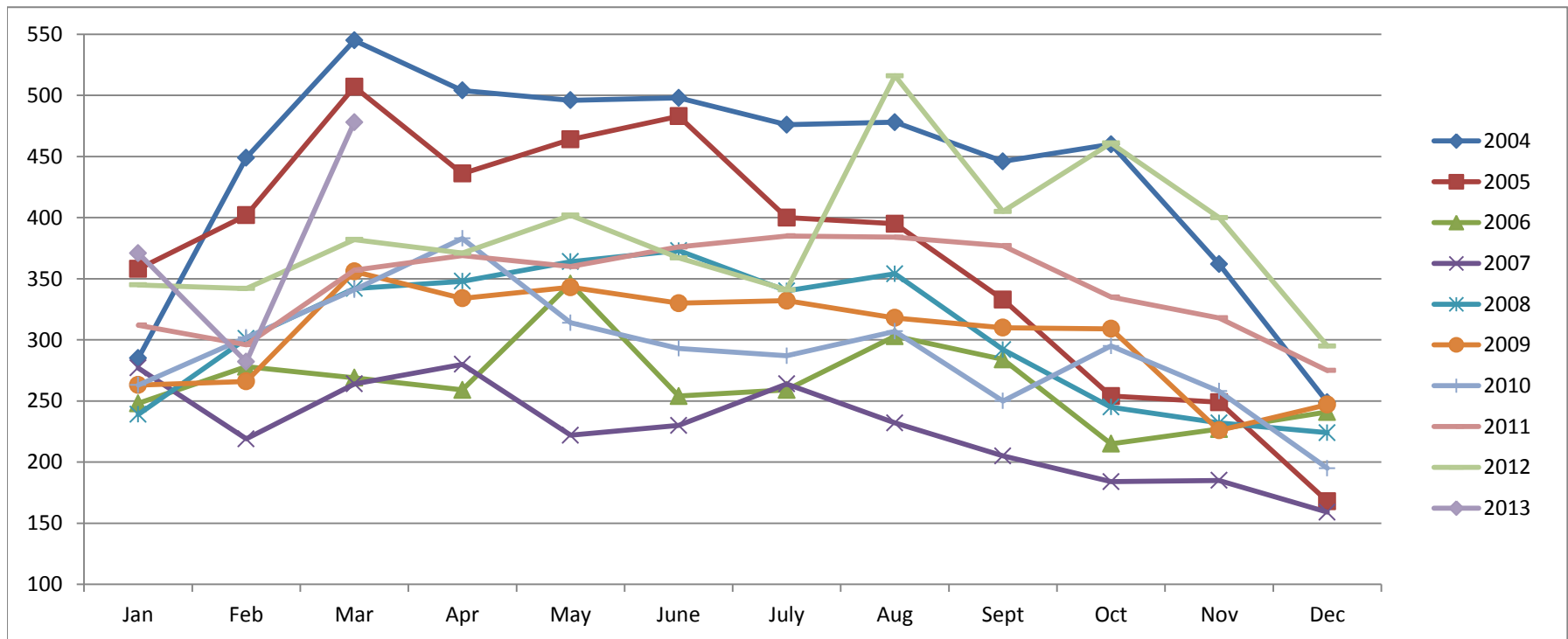


Based on MetroList™ Multiple Listing Service Data. Compiled monthly by PCAR, (916) 624-8271.

# Placer County Association of REALTORS® (PCAR) Monthly New Sales Opened (2004-2013)

(Placer County Resale Homes)

	Jan	Feb	Mar	Apr	May	June	July	Aug	Sept	Oct	Nov	Dec
<b>2004</b>	285	449	545	504	496	498	476	478	446	460	362	249
<b>2005</b>	358	402	507	436	464	483	400	395	333	254	249	168
<b>2006</b>	248	278	269	259	346	254	259	303	284	215	227	241
<b>2007</b>	277	219	264	280	222	230	264	232	205	184	185	159
<b>2008</b>	239	301	342	348	364	373	340	354	292	245	232	224
<b>2009</b>	263	266	356	334	343	330	332	318	310	309	226	247
<b>2010</b>	263	302	341	383	314	293	287	307	250	295	258	195
<b>2011</b>	312	296	357	369	360	376	385	384	377	335	318	275
<b>2012</b>	345	342	382	371	402	367	341	516	405	461	400	295
<b>2013</b>	371	282	478									



Based on MetroList™ Multiple Listing Service Data. Compiled monthly by PCAR, (916) 624-8271.