

MLS Statistics

June 2014 - Placer County

RESIDENTIAL ONLY (Single Family Homes)

Preliminary Report

	Current Month	Last Month	% Change	Last Year	% Change
New Listings Published	676	853	-20.8%	604	11.9%
Listing Inventory	1,425	1,326	7.5%	829	71.9%
Number of New Escrows	425	402	5.7%	476	-10.7%
Number of Closed Escrows	505	520	-2.9%	565	-10.6%
Median (1)	\$380,000	\$379,995	0.0%	\$370,000	2.7%
Mean (2)	\$422,206	\$421,278	0.2%	\$408,814	3.3%
Mode (3)	\$300,000 to \$349,999	\$350,000 to \$399,999	NA	\$500,000 to \$749,999	NA

YEAR-TO-DATE STATISTICS

	01/01/14 to 06/30/14	01/01/14 to 05/31/14	01/01/13 to 06/30/13	% Change
New Listings Published	3,789	3,113	3,401	11.4%
Number of New Escrows Opened	2,170	1,745	2,100	3.3%
Number of Closed Escrows	2,537	2,017	2,831	-10.4%
Dollar Volume of Closed Escrows	\$1,048,512,252	\$828,817,803	\$1,063,769,852	-1.4%
Median	\$370,000	\$370,000	\$336,000	10.1%
Mean	\$413,288	\$410,916	\$375,758	10.0%

PRICE BRACKET OF SALES BASED ON FINAL SALES

Selling Price	Singlefamily Residential	Percent of Total	Condos	Resid. Income	Resid. Lots/Land
UNDER \$69,999	1	0.2%	1	0	3
\$70,000-\$79,999	0	0.0%	2	0	2
\$80,000-\$89,999	2	0.4%	0	0	0
\$90,000-\$99,999	1	0.2%	0	0	1
\$100,000-\$119,999	0	0.0%	0	0	1
\$120,000-\$139,999	1	0.2%	2	0	3
\$140,000-\$159,999	3	0.6%	4	0	0
\$160,000-\$179,999	2	0.4%	4	0	0
\$180,000-\$199,999	5	1.0%	2	0	0
\$200,000-\$249,999	38	7.5%	7	0	3
\$250,000-\$299,999	48	9.5%	1	0	2
\$300,000-\$349,999	103	20.4%	0	1	1
\$350,000-\$399,999	83	16.4%	0	0	1
\$400,000-\$449,999	70	13.9%	0	0	1
\$450,000-\$499,999	28	5.5%	0	0	1
\$500,000-\$749,999	92	18.2%	0	0	1
\$750,000-\$999,999	20	4.0%	0	0	0
OVER \$1,000,000	8	1.6%	0	0	1
TOTAL	505		23	1	21

Selling Prices of Classes Listed Above

\$89,999 or less	2.0%
\$90,000-\$139,999	1.6%
\$140,000-\$179,999	2.4%
\$180,000-\$299,999	19.3%
\$300,000-\$399,999	34.4%
\$400,000-\$749,999	35.1%
\$750,000 and over	5.3%



TYPE OF FINANCING OF UNITS SOLD

Financing	# of Units
Cash	110
Conventional	294
FHA	72
VA	36
Other	20

LENGTH OF TIME ON MARKET

Days on Market	# of units	% of total
1-30 Days	347	65.2%
31-60 Days	108	20.3%
61-90 Days	41	7.7%
91-120 Days	14	2.6%
121+Days	22	4.1%

This representation is based in whole or part on data supplied by MetroList. MetroList does not guarantee nor is it in any way responsible for its accuracy. Data maintained by MetroList may not reflect all real estate activity in the market. All information provided is deemed reliable but is not guaranteed and should be independently verified.

1. Median: The midpoint at which an equal number of homes sold above and below this value.
2. Mean: The arithmetic average of the total number of residential sales divided into total residential sales dollar volume.
3. Mode: The price range within which the most number of homes were sold.



Home Sales Report - June 2014

Number of New Listing:	676	Total Sales Reported Last Month:	520
Number of New Listings Last Month:	853	Sales Volume:	\$213,213,973
Total Sales Reported:	505	Average Sales Price:	\$422,206

These figures are based on MetroList Multiple Listing Service Data. Compiled monthly by PCAR, (916) 624-8271

ALL AREAS		# Sold	Avg. Sale Price	Last Month	Last Year	
Total Sales	505	Condos	23	\$169,084	\$182,211	\$164,759
Pending Sales	425	Houses	505	\$422,206	\$421,278	\$408,814
Total Number of Listings	1,425	2 Bedrooms	78	\$346,319	\$334,690	\$309,828
Median Sales Price	\$380,000	3 Bedrooms	220	\$357,247	\$355,485	\$343,965
Average Sales Price	\$422,206	4+ Bedrooms	207	\$519,840	\$521,769	\$508,090

Breakdown By Areas

Area 12747, 12661, 12668, 12678 Roseville				Last Year	Area 12650, 12663 Loomis, Penryn				Last Year
Total Sales:	163			185	Total Sales:				23
Pending Sales	153			165	Pending Sales				23
Total Number of Listings	418			240	Total Number of Listings				44
Median Sales Price	\$354,500			\$340,500	Median Sales Price				\$499,900
Average Sales Price	\$381,763			\$364,711	Average Sales Price				\$603,310
	<u>#Sold</u>	<u>Avg. Sales Price</u>	<u>Last Month</u>	<u>Last Year</u>		<u>#Sold</u>	<u>Avg. Sales Price</u>	<u>Last Month</u>	<u>Last Year</u>
Condos	5	\$155,950	\$190,214	\$180,917	Condos	0	\$0	\$0	\$0
Houses	163	\$381,763	\$393,227	\$364,711	Houses	20	\$483,623	\$569,769	\$603,310
2 Bedrooms	26	\$282,707	\$303,698	\$263,675	2 Bedrooms	2	\$400,500	\$247,500	\$175,000
3 Bedrooms	63	\$339,681	\$349,489	\$304,363	3 Bedrooms	10	\$384,195	\$383,623	\$477,557
4+ Bedrooms	74	\$452,393	\$468,104	\$445,536	4+ Bedrooms	8	\$628,688	\$859,750	\$768,000

Area 12746 Granite Bay				Last Year	Area 12201-12209 Lincoln				Last Year
Total Sales:	35			40	Total Sales:				114
Pending Sales	29			37	Pending Sales				94
Total Number of Listings	143			92	Total Number of Listings				121
Median Sales Price	\$700,000			\$677,500	Median Sales Price				\$367,500
Average Sales Price	\$747,784			\$702,237	Average Sales Price				\$382,611
	<u>#Sold</u>	<u>Avg. Sales Price</u>	<u>Last Month</u>	<u>Last Year</u>		<u>#Sold</u>	<u>Avg. Sales Price</u>	<u>Last Month</u>	<u>Last Year</u>
Condos	0	\$0	\$0	\$0	Condos	6	\$207,817	\$191,250	\$177,071
Houses	35	\$747,784	\$726,893	\$702,237	Houses	109	\$379,104	\$398,311	\$382,611
2 Bedrooms	0	\$0	\$310,000	\$0	2 Bedrooms	30	\$423,833	\$411,348	\$401,466
3 Bedrooms	5	\$534,200	\$451,333	\$493,698	3 Bedrooms	44	\$326,511	\$341,736	\$332,172
4+ Bedrooms	30	\$783,381	\$825,476	\$781,338	4+ Bedrooms	35	\$406,882	\$437,356	\$406,628

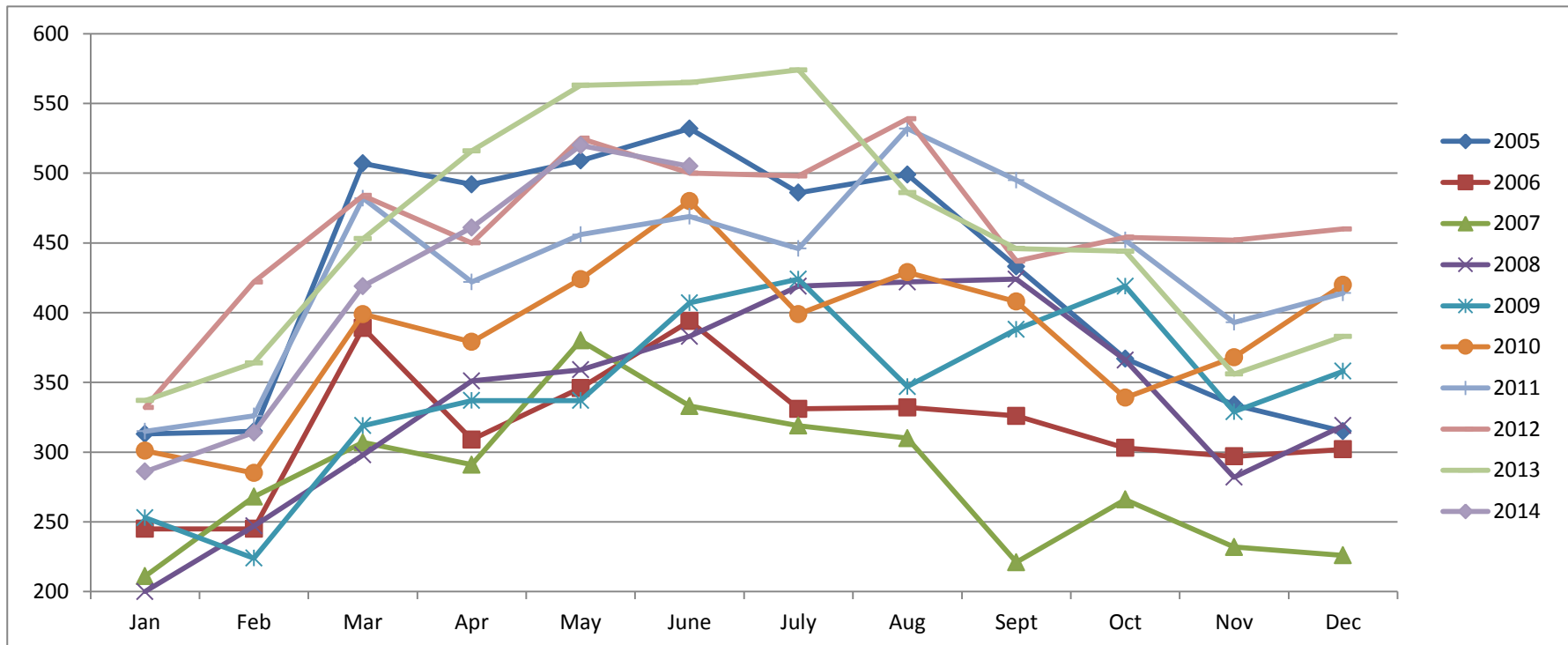
Area 12301, 12306, 12307, 12658, Auburn, Newcastle				Last Year	Area 12302, 12303, 12305 MV,CV,CX,AG,Wei,BC				Last Year
Total Sales:	49			61	Total Sales:				32
Pending Sales	37			54	Pending Sales				20
Total Number of Listings	163			108	Total Number of Listings				95
Median Sales Price	\$395,000			\$420,000	Median Sales Price				\$225,000
Average Sales Price	\$443,865			\$450,184	Average Sales Price				\$268,875
	<u>#Sold</u>	<u>Avg. Sales Price</u>	<u>Last Month</u>	<u>Last Year</u>		<u>#Sold</u>	<u>Avg. Sales Price</u>	<u>Last Month</u>	<u>Last Year</u>
Condos	4	\$89,875	\$170,667	\$127,981	Condos	0	\$0	\$0	\$88,000
Houses	49	\$443,865	\$434,656	\$450,184	Houses	31	\$343,542	\$322,440	\$268,875
2 Bedrooms	5	\$412,300	\$371,800	\$228,700	2 Bedrooms	9	\$209,833	\$220,405	\$162,986
3 Bedrooms	32	\$400,294	\$377,320	\$416,976	3 Bedrooms	19	\$324,016	\$375,333	\$306,639
4+ Bedrooms	12	\$573,208	\$551,167	\$526,867	4+ Bedrooms	3	\$868,333	\$430,167	\$492,500

Area 12677, 12765 Rocklin				Last Year	Area 12304 Foresthill				Last Year
Total Sales:	86			96	Total Sales:				13
Pending Sales	63			69	Pending Sales				13
Total Number of Listings	208			85	Total Number of Listings				36
Median Sales Price	\$393,750			\$374,550	Median Sales Price				\$230,500
Average Sales Price	\$431,481			\$398,956	Average Sales Price				\$246,923
	<u>#Sold</u>	<u>Avg. Sales Price</u>	<u>Last Month</u>	<u>Last Year</u>		<u>#Sold</u>	<u>Avg. Sales Price</u>	<u>Last Month</u>	<u>Last Year</u>
Condos	8	\$187,847	\$165,986	\$183,387	Condos	0	\$0	\$0	\$0
Houses	86	\$431,481	\$429,630	\$398,956	Houses	11	\$373,550	\$298,527	\$246,923
2 Bedrooms	5	\$340,300	\$318,117	\$305,300	2 Bedrooms	1	\$495,000	\$129,825	\$220,625
3 Bedrooms	39	\$378,447	\$358,636	\$333,667	3 Bedrooms	7	\$340,857	\$270,071	\$258,611
4+ Bedrooms	42	\$491,580	\$482,816	\$470,155	4+ Bedrooms	3	\$409,350	\$517,025	\$0

Placer County Association of REALTORS® (PCAR) Monthly Closed Escrows (2005-2014)

(Placer County Resale Homes)

	Jan	Feb	Mar	Apr	May	June	July	Aug	Sept	Oct	Nov	Dec
2005	313	315	507	492	509	532	486	499	433	367	334	315
2006	245	245	389	309	346	394	331	332	326	303	297	302
2007	211	268	307	291	380	333	319	310	221	266	232	226
2008	200	247	298	351	359	383	419	422	424	366	282	319
2009	253	224	319	337	337	407	424	347	388	419	329	358
2010	301	285	399	379	424	480	399	429	408	339	368	420
2011	315	326	482	422	456	469	446	532	495	452	393	414
2012	332	422	484	450	525	500	498	539	437	454	452	460
2013	337	364	453	516	563	565	574	486	446	444	356	383
2014	286	314	419	461	520	505						

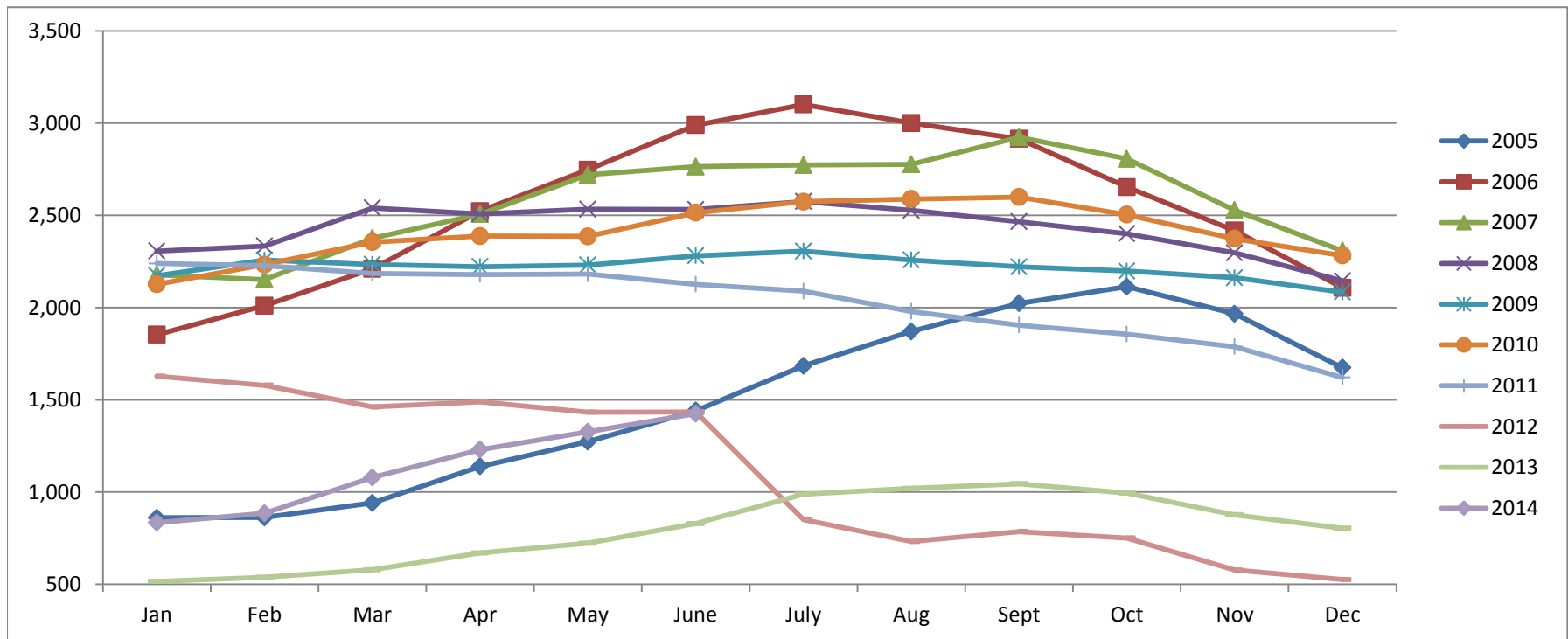


Based on MetroList™ Multiple Listing Service Data. Compiled monthly by PCAR, (916) 624-8271.

Placer County Association of REALTORS® (PCAR) Total Listing Inventory by Month (2005-2014)

(Placer County Resale Homes)

	Jan	Feb	Mar	Apr	May	June	July	Aug	Sept	Oct	Nov	Dec
2005	861	862	941	1,139	1,273	1,441	1,684	1,871	2,023	2,113	1,966	1,674
2006	1,853	2,010	2,210	2,523	2,747	2,989	3,101	3,000	2,915	2,653	2,417	2,107
2007	2,178	2,152	2,376	2,507	2,720	2,764	2,773	2,777	2,923	2,806	2,528	2,308
2008	2,307	2,334	2,540	2,508	2,533	2,532	2,575	2,527	2,466	2,401	2,297	2,145
2009	2,173	2,257	2,234	2,222	2,231	2,281	2,306	2,258	2,221	2,198	2,162	2,084
2010	2,126	2,233	2,355	2,388	2,386	2,514	2,574	2,589	2,599	2,504	2,373	2,282
2011	2,239	2,227	2,185	2,179	2,182	2,126	2,089	1,979	1,905	1,856	1,788	1,621
2012	1,628	1,579	1,461	1,489	1,433	1,435	851	732	786	751	577	526
2013	516	538	579	670	723	829	988	1,020	1,045	994	877	804
2014	834	885	1,079	1,230	1,326	1,425						

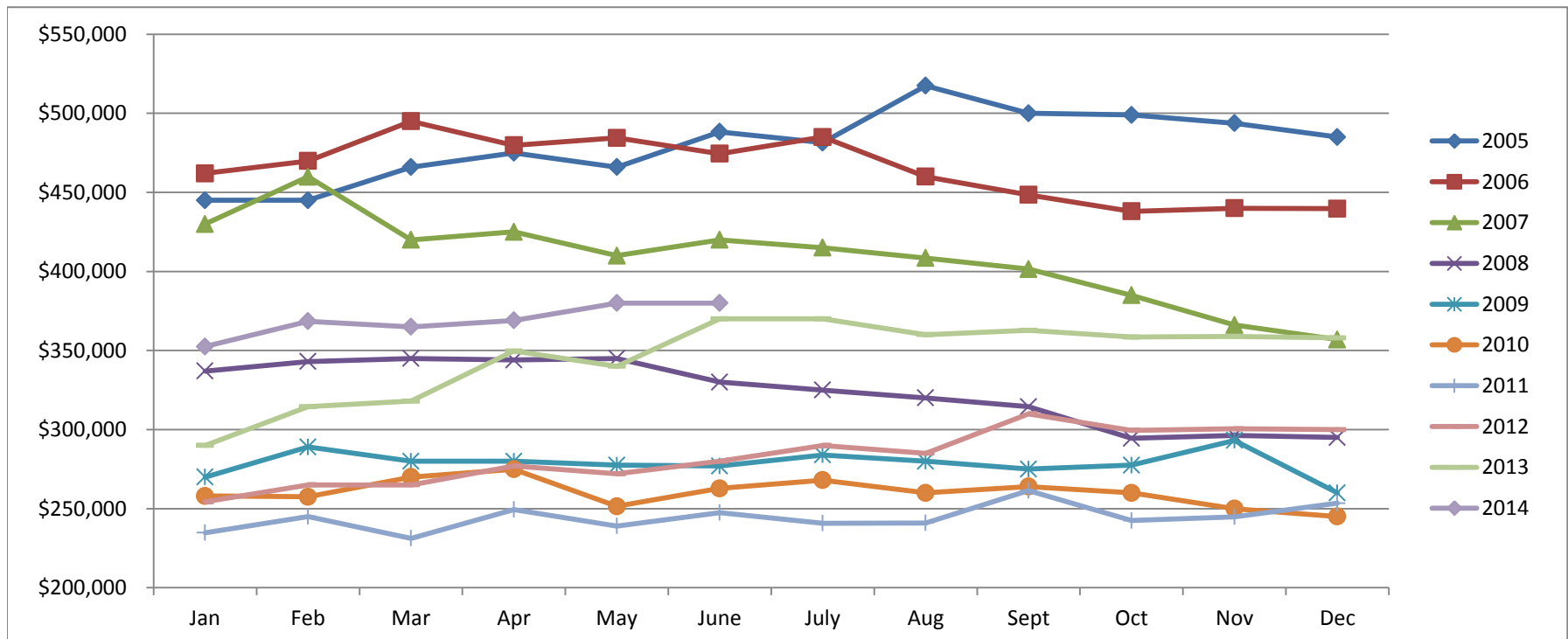


Based on MetroList™ Multiple Listing Service Data. Compiled monthly by PCAR, (916) 624-8271.

Placer County Association of REALTORS® (PCAR) Median Price for Single-Family Detached Homes (2005-2014)

(Placer County Resale Homes)

	Jan	Feb	Mar	Apr	May	June	July	Aug	Sept	Oct	Nov	Dec
2005	\$445,000	\$445,000	\$466,000	\$475,000	\$466,000	\$488,250	\$481,500	\$517,500	\$500,000	\$499,000	\$493,750	\$485,000
2006	\$462,000	\$469,900	\$495,000	\$479,800	\$484,500	\$474,500	\$485,000	\$460,000	\$448,500	\$438,000	\$439,974	\$439,700
2007	\$430,000	\$459,900	\$419,950	\$425,000	\$410,000	\$420,000	\$415,000	\$408,500	\$401,500	\$385,000	\$366,087	\$356,928
2008	\$337,000	\$343,000	\$345,000	\$344,000	\$345,000	\$330,000	\$325,000	\$320,000	\$314,450	\$294,450	\$296,217	\$295,000
2009	\$270,000	\$289,000	\$280,000	\$280,000	\$277,500	\$277,000	\$283,950	\$280,000	\$275,000	\$277,500	\$293,116	\$260,000
2010	\$258,000	\$257,500	\$270,000	\$274,950	\$251,500	\$262,803	\$268,000	\$260,000	\$264,000	\$260,000	\$250,000	\$245,000
2011	\$234,750	\$245,000	\$231,250	\$249,450	\$239,000	\$247,500	\$240,750	\$241,000	\$261,500	\$242,500	\$244,900	\$253,450
2012	\$254,325	\$265,000	\$265,000	\$277,000	\$272,000	\$280,000	\$290,000	\$285,000	\$310,000	\$299,500	\$300,500	\$299,975
2013	\$290,000	\$314,500	\$318,000	\$349,700	\$340,000	\$370,000	\$370,000	\$360,000	\$362,750	\$358,500	\$359,000	\$358,000
2014	\$352,500	\$368,500	\$365,000	\$369,000	\$379,995	\$380,000						

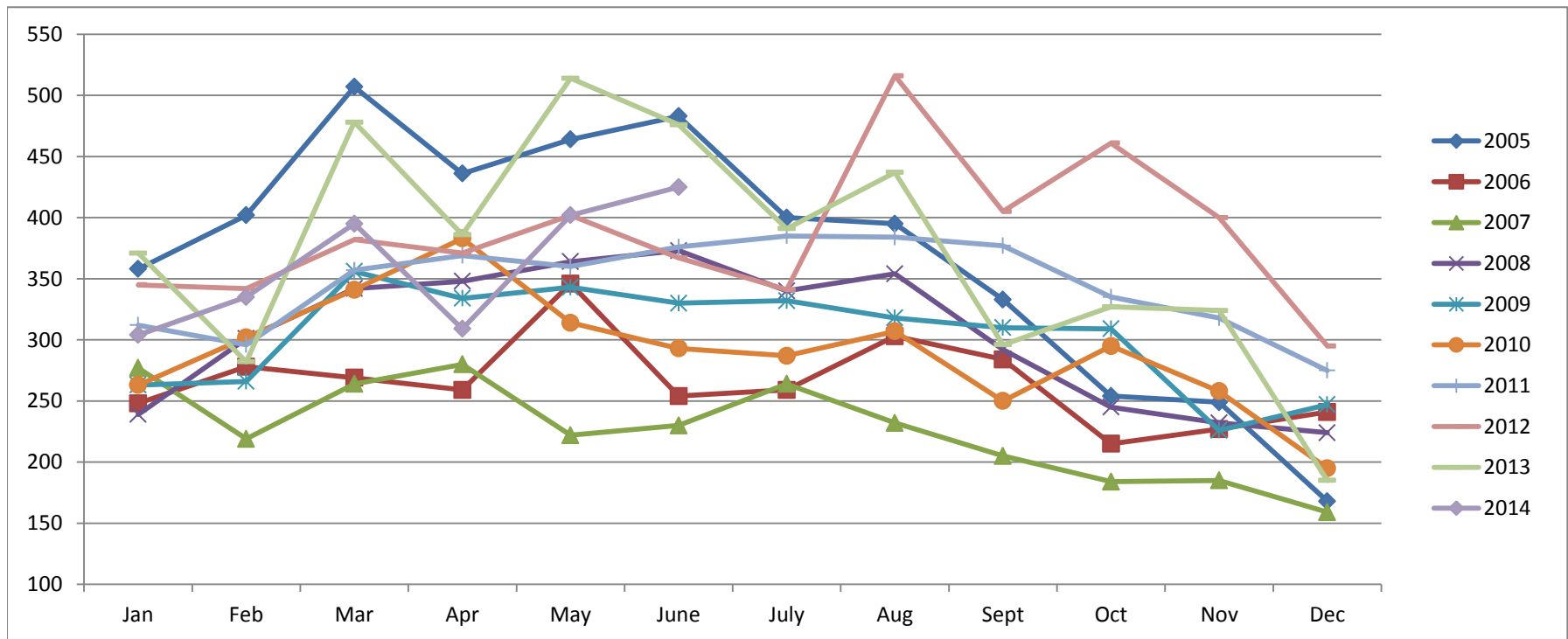


Based on MetroList™ Multiple Listing Service Data. Compiled monthly by PCAR, (916) 624-8271.

Placer County Association of REALTORS® (PCAR) Monthly New Sales Opened (2005-2014)

(Placer County Resale Homes)

	Jan	Feb	Mar	Apr	May	June	July	Aug	Sept	Oct	Nov	Dec
2005	358	402	507	436	464	483	400	395	333	254	249	168
2006	248	278	269	259	346	254	259	303	284	215	227	241
2007	277	219	264	280	222	230	264	232	205	184	185	159
2008	239	301	342	348	364	373	340	354	292	245	232	224
2009	263	266	356	334	343	330	332	318	310	309	226	247
2010	263	302	341	383	314	293	287	307	250	295	258	195
2011	312	296	357	369	360	376	385	384	377	335	318	275
2012	345	342	382	371	402	367	341	516	405	461	400	295
2013	371	282	478	386	514	476	391	437	296	327	324	185
2014	304	335	395	309	402	425						



Based on MetroList™ Multiple Listing Service Data. Compiled monthly by PCAR, (916) 624-8271.