

MLS Statistics

June 2013 - Placer County

RESIDENTIAL ONLY (Single Family Homes)

Preliminary Report

	Current Month	Last Month	% Change	Last Year	% Change
New Listings Published	604	628	-3.8%	504	19.8%
Listing Inventory	829	723	14.7%	1,435	-42.2%
Number of New Escrows	476	514	-7.4%	367	29.7%
Number of Closed Escrows	565	563	0.4%	500	13.0%
Median (1)	\$370,000	\$340,000	8.8%	\$280,000	32.1%
Mean (2)	\$408,814	\$389,834	4.9%	\$328,510	24.4%
Mode (3)	\$500,000 to \$749,999	\$300,000 to \$349,999	NA	\$250,000 to \$299,999	NA

YEAR-TO-DATE STATISTICS

	01/01/13 to 06/30/13	01/01/13 to 05/31/13	01/01/12 to 06/30/12	% Change
New Listings Published	3,401	2,797	3,066	10.9%
Number of New Escrows Opened	2,100	1,624	2,219	-5.4%
Number of Closed Escrows	2,831	2,255	2,713	4.3%
Dollar Volume of Closed Escrows	\$1,063,769,852	\$828,768,714	\$826,044,195	28.8%
Median	\$336,000	\$329,342	\$267,250	25.7%
Mean	\$375,758	\$367,525	\$304,274	23.5%

PRICE BRACKET OF SALES BASED ON FINAL SALES

Selling Price	Singlefamily Residential	Percent of Total	Condos	Resid. Income	Resid. Lots/Land
UNDER \$69,999	1	0.2%	2	0	3
\$70,000-\$79,999	3	0.5%	3	0	2
\$80,000-\$89,999	1	0.2%	3	0	2
\$90,000-\$99,999	1	0.2%	2	0	0
\$100,000-\$119,999	2	0.4%	0	0	0
\$120,000-\$139,999	6	1.1%	3	0	2
\$140,000-\$159,999	6	1.1%	4	0	0
\$160,000-\$179,999	11	1.9%	6	0	1
\$180,000-\$199,999	6	1.1%	4	0	2
\$200,000-\$249,999	57	10.1%	6	0	0
\$250,000-\$299,999	70	12.4%	3	0	2
\$300,000-\$349,999	79	14.0%	2	0	1
\$350,000-\$399,999	90	15.9%	0	0	1
\$400,000-\$449,999	53	9.4%	0	0	1
\$450,000-\$499,999	53	9.4%	0	0	0
\$500,000-\$749,999	97	17.2%	0	0	2
\$750,000-\$999,999	18	3.2%	0	0	0
OVER \$1,000,000	11	1.9%	0	0	0
TOTAL	565		38	0	19

Selling Prices of Classes Listed Above

\$89,999 or less	3.2%
\$90,000-\$139,999	2.6%
\$140,000-\$179,999	4.5%
\$180,000-\$299,999	24.1%
\$300,000-\$399,999	27.8%
\$400,000-\$749,999	33.1%
\$750,000 and over	4.7%



TYPE OF FINANCING OF UNITS SOLD

Financing	# of Units
Cash	143
Conventional	319
FHA	69
VA	33
Other	42

LENGTH OF TIME ON MARKET

Days on Market	# of units	% of total
1-30 Days	467	77.1%
31-60 Days	81	13.4%
61-90 Days	31	5.1%
91-120 Days	10	1.7%
121+Days	17	2.8%

This representation is based in whole or part on data supplied by MetroList. MetroList does not guarantee nor is it in any way responsible for its accuracy. Data maintained by MetroList may not reflect all real estate activity in the market. All information provided is deemed reliable but is not guaranteed and should be independently verified.

1. Median: The midpoint at which an equal number of homes sold above and below this value.
2. Mean: The arithmetic average of the total number of residential sales divided into total residential sales dollar volume.
3. Mode: The price range within which the most number of homes were sold.



Home Sales Report - June 2013

Number of New Listing:	604	Total Sales Reported Last Month:	563
Number of New Listings Last Month:	628	Sales Volume:	\$230,979,638
Total Sales Reported:	565	Average Sales Price:	\$408,814

These figures are based on MetroList Multiple Listing Service Data. Compiled monthly by PCAR, (916) 624-8271

ALL AREAS		# Sold	Avg. Sale Price	Last Month	Last Year	
Total Sales	565	Condos	38	\$164,759	\$155,894	\$118,672
Pending Sales	476	Houses	565	\$408,814	\$384,611	\$328,510
Total Number of Listings	829	2 Bedrooms	95	\$309,828	\$317,459	\$267,766
Median Sales Price	\$370,000	3 Bedrooms	227	\$343,965	\$321,415	\$267,954
Average Sales Price	\$408,814	4+ Bedrooms	243	\$508,090	\$481,317	\$403,179

Breakdown By Areas

Area 12747, 12661, 12668, 12678 Roseville				Last Year	Area 12650, 12663 Loomis, Penryn				Last Year
Total Sales:	185			182	Total Sales:			23	23
Pending Sales	165			142	Pending Sales			23	18
Total Number of Listings	240			459	Total Number of Listings			44	77
Median Sales Price	\$340,500			\$268,000	Median Sales Price			\$499,900	\$469,900
Average Sales Price	\$364,711			\$296,293	Average Sales Price			\$603,310	\$460,309
	<u>#Sold</u>	<u>Avg. Sales Price</u>	<u>Last Month</u>			<u>#Sold</u>	<u>Avg. Sales Price</u>	<u>Last Month</u>	<u>Last Year</u>
Condos	12	\$180,917	\$134,071	\$114,221	Condos	0	\$0	\$0	\$0
Houses	185	\$364,711	\$360,007	\$296,293	Houses	23	\$603,310	\$531,350	\$460,309
2 Bedrooms	24	\$263,675	\$302,402	\$216,250	2 Bedrooms	1	\$175,000	\$430,000	\$0
3 Bedrooms	75	\$304,363	\$311,074	\$242,033	3 Bedrooms	11	\$477,557	\$349,550	\$405,400
4+ Bedrooms	86	\$445,536	\$428,891	\$357,628	4+ Bedrooms	11	\$768,000	\$783,938	\$563,263

Area 12746 Granite Bay				Last Year	Area 12201-12208 Lincoln				Last Year
Total Sales:	40			30	Total Sales:			114	102
Pending Sales	37			19	Pending Sales			94	77
Total Number of Listings	92			116	Total Number of Listings			121	231
Median Sales Price	\$677,500			\$520,000	Median Sales Price			\$367,500	\$263,750
Average Sales Price	\$702,237			\$650,124	Average Sales Price			\$382,611	\$296,807
	<u>#Sold</u>	<u>Avg. Sales Price</u>	<u>Last Month</u>	<u>Last Year</u>		<u>#Sold</u>	<u>Avg. Sales Price</u>	<u>Last Month</u>	<u>Last Year</u>
Condos	0	\$0	\$0	\$0	Condos	7	\$177,071	\$165,100	\$139,667
Houses	40	\$702,237	\$686,119	\$650,124	Houses	114	\$382,611	\$345,570	\$296,807
2 Bedrooms	0	\$0	\$427,000	\$0	2 Bedrooms	40	\$401,466	\$364,631	\$362,150
3 Bedrooms	11	\$493,698	\$440,115	\$352,776	3 Bedrooms	34	\$332,172	\$322,869	\$237,412
4+ Bedrooms	29	\$781,338	\$815,039	\$758,250	4+ Bedrooms	40	\$406,628	\$352,294	\$311,493

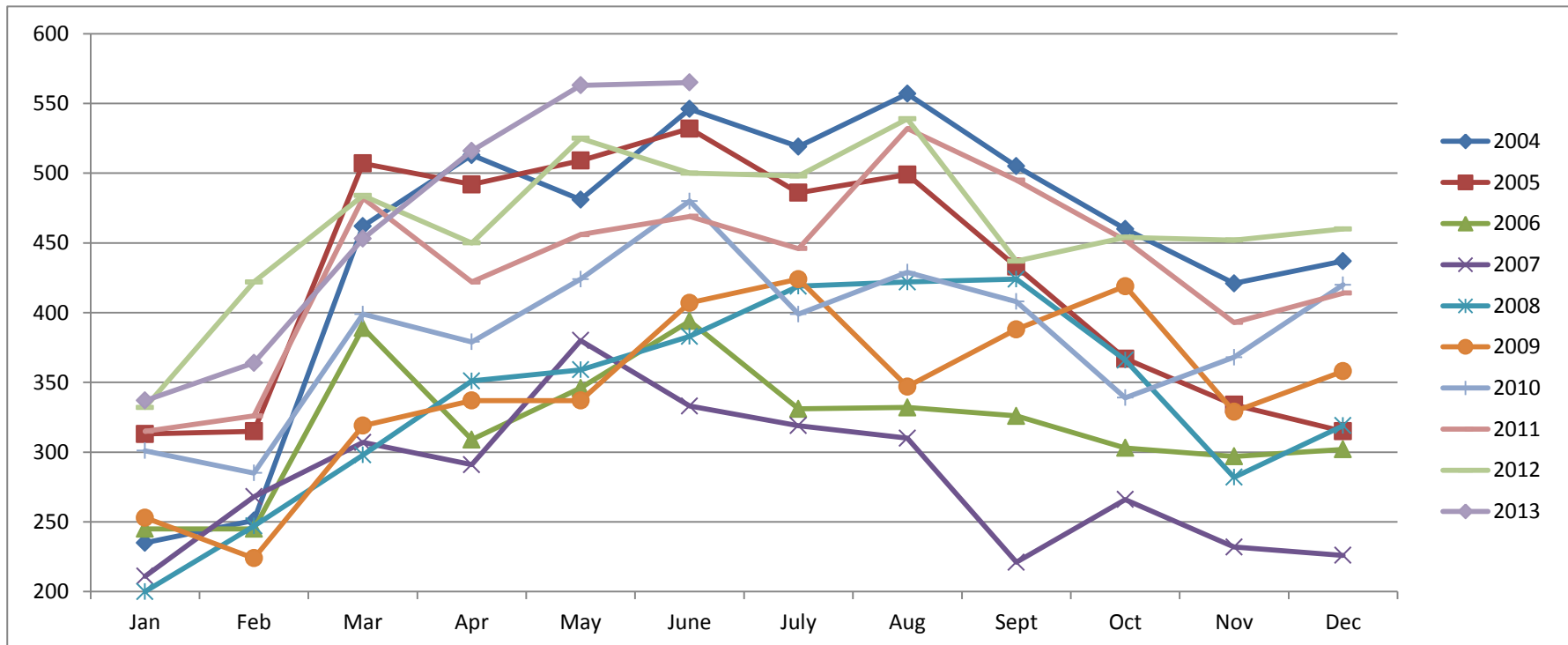
Area 12301, 12306, 12307, 12658, Auburn, Newcastle				Last Year	Area 12302, 12303, 12305 MV, GV, CX, AG, Wei, BC				Last Year
Total Sales:	61			55	Total Sales:			32	24
Pending Sales	54			33	Pending Sales			20	24
Total Number of Listings	108			181	Total Number of Listings			95	140
Median Sales Price	\$420,000			\$273,000	Median Sales Price			\$225,000	\$262,500
Average Sales Price	\$450,184			\$289,496	Average Sales Price			\$268,875	\$292,063
	<u>#Sold</u>	<u>Avg. Sales Price</u>	<u>Last Month</u>	<u>Last Year</u>		<u>#Sold</u>	<u>Avg. Sales Price</u>	<u>Last Month</u>	<u>Last Year</u>
Condos	8	\$127,981	\$250,000	\$76,333	Condos	2	\$88,000	\$102,200	\$0
Houses	61	\$450,184	\$437,304	\$289,496	Houses	32	\$268,875	\$318,726	\$292,063
2 Bedrooms	5	\$228,700	\$290,138	\$136,258	2 Bedrooms	11	\$162,986	\$203,500	\$122,333
3 Bedrooms	29	\$416,976	\$371,881	\$294,272	3 Bedrooms	19	\$306,639	\$301,723	\$258,750
4+ Bedrooms	27	\$526,867	\$556,759	\$339,967	4+ Bedrooms	2	\$492,500	\$671,500	\$431,429

Area 12677, 12765 Rocklin				Last Year	Area 12304 Foresthill				Last Year
Total Sales:	96			69	Total Sales:			13	15
Pending Sales	69			50	Pending Sales			13	3
Total Number of Listings	85			178	Total Number of Listings			36	48
Median Sales Price	\$374,550			\$315,000	Median Sales Price			\$230,500	\$200,000
Average Sales Price	\$398,956			\$347,557	Average Sales Price			\$246,923	\$203,415
	<u>#Sold</u>	<u>Avg. Sales Price</u>	<u>Last Month</u>	<u>Last Year</u>		<u>#Sold</u>	<u>Avg. Sales Price</u>	<u>Last Month</u>	<u>Last Year</u>
Condos	9	\$183,387	\$178,000	\$124,375	Condos	0	\$0	\$0	\$0
Houses	96	\$398,956	\$388,119	\$347,557	Houses	13	\$246,923	\$236,958	\$203,415
2 Bedrooms	10	\$305,300	\$325,522	\$284,050	2 Bedrooms	4	\$220,625	\$0	\$125,950
3 Bedrooms	38	\$333,667	\$301,780	\$276,983	3 Bedrooms	9	\$258,611	\$225,350	\$181,071
4+ Bedrooms	48	\$470,155	\$446,083	\$396,957	4+ Bedrooms	0	\$0	\$295,000	\$292,200

Placer County Association of REALTORS® (PCAR) Monthly Closed Escrows (2004-2013)

(Placer County Resale Homes)

	Jan	Feb	Mar	Apr	May	June	July	Aug	Sept	Oct	Nov	Dec
2004	235	251	462	513	481	546	519	557	505	460	421	437
2005	313	315	507	492	509	532	486	499	433	367	334	315
2006	245	245	389	309	346	394	331	332	326	303	297	302
2007	211	268	307	291	380	333	319	310	221	266	232	226
2008	200	247	298	351	359	383	419	422	424	366	282	319
2009	253	224	319	337	337	407	424	347	388	419	329	358
2010	301	285	399	379	424	480	399	429	408	339	368	420
2011	315	326	482	422	456	469	446	532	495	452	393	414
2012	332	422	484	450	525	500	498	539	437	454	452	460
2013	337	364	453	516	563	565						

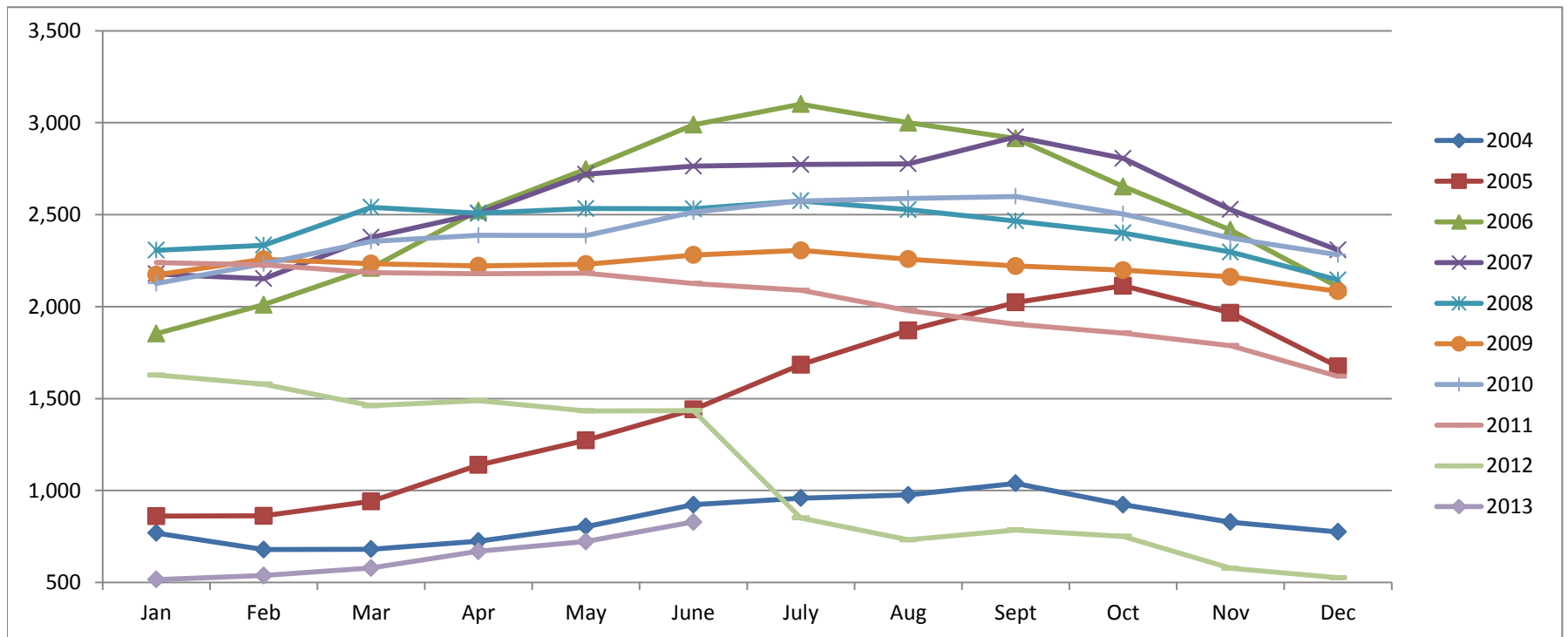


Based on MetroList™ Multiple Listing Service Data. Compiled monthly by PCAR, (916) 624-8271.

Placer County Association of REALTORS® (PCAR) Total Listing Inventory by Month (2004-2013)

(Placer County Resale Homes)

	Jan	Feb	Mar	Apr	May	June	July	Aug	Sept	Oct	Nov	Dec
2004	769	679	681	725	804	923	959	976	1,039	923	828	775
2005	861	862	941	1,139	1,273	1,441	1,684	1,871	2,023	2,113	1,966	1,674
2006	1,853	2,010	2,210	2,523	2,747	2,989	3,101	3,000	2,915	2,653	2,417	2,107
2007	2,178	2,152	2,376	2,507	2,720	2,764	2,773	2,777	2,923	2,806	2,528	2,308
2008	2,307	2,334	2,540	2,508	2,533	2,532	2,575	2,527	2,466	2,401	2,297	2,145
2009	2,173	2,257	2,234	2,222	2,231	2,281	2,306	2,258	2,221	2,198	2,162	2,084
2010	2,126	2,233	2,355	2,388	2,386	2,514	2,574	2,589	2,599	2,504	2,373	2,282
2011	2,239	2,227	2,185	2,179	2,182	2,126	2,089	1,979	1,905	1,856	1,788	1,621
2012	1,628	1,579	1,461	1,489	1,433	1,435	851	732	786	751	577	526
2013	516	538	579	670	723	829						

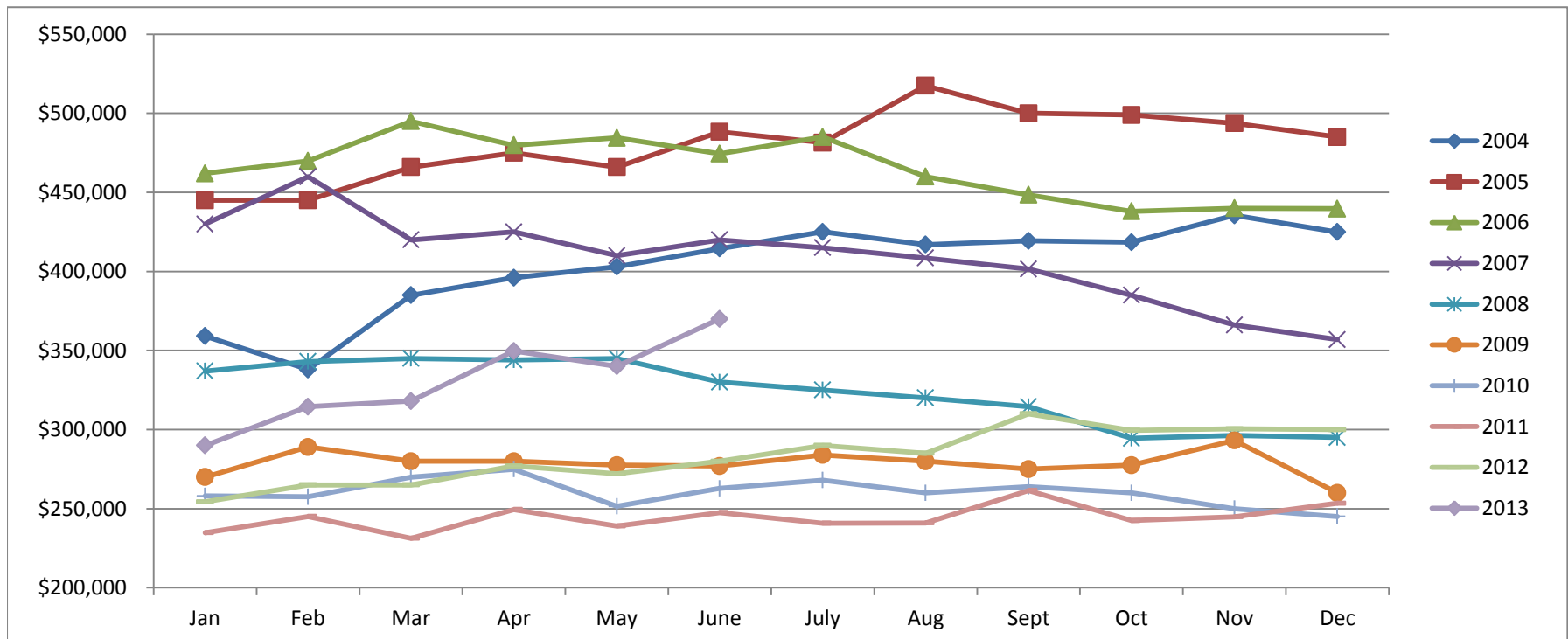


Based on MetroList™ Multiple Listing Service Data. Compiled monthly by PCAR, (916) 624-8271.

Placer County Association of REALTORS® (PCAR) Median Price for Single-Family Detached Homes (2004-2013)

(Placer County Resale Homes)

	Jan	Feb	Mar	Apr	May	June	July	Aug	Sept	Oct	Nov	Dec
2004	\$359,100	\$338,000	\$385,000	\$396,000	\$403,000	\$414,500	\$425,000	\$417,000	\$419,350	\$418,500	\$435,500	\$424,975
2005	\$445,000	\$445,000	\$466,000	\$475,000	\$466,000	\$488,250	\$481,500	\$517,500	\$500,000	\$499,000	\$493,750	\$485,000
2006	\$462,000	\$469,900	\$495,000	\$479,800	\$484,500	\$474,500	\$485,000	\$460,000	\$448,500	\$438,000	\$439,974	\$439,700
2007	\$430,000	\$459,900	\$419,950	\$425,000	\$410,000	\$420,000	\$415,000	\$408,500	\$401,500	\$385,000	\$366,087	\$356,928
2008	\$337,000	\$343,000	\$345,000	\$344,000	\$345,000	\$330,000	\$325,000	\$320,000	\$314,450	\$294,450	\$296,217	\$295,000
2009	\$270,000	\$289,000	\$280,000	\$280,000	\$277,500	\$277,000	\$283,950	\$280,000	\$275,000	\$277,500	\$293,116	\$260,000
2010	\$258,000	\$257,500	\$270,000	\$274,950	\$251,500	\$262,803	\$268,000	\$260,000	\$264,000	\$260,000	\$250,000	\$245,000
2011	\$234,750	\$245,000	\$231,250	\$249,450	\$239,000	\$247,500	\$240,750	\$241,000	\$261,500	\$242,500	\$244,900	\$253,450
2012	\$254,325	\$265,000	\$265,000	\$277,000	\$272,000	\$280,000	\$290,000	\$285,000	\$310,000	\$299,500	\$300,500	\$299,975
2013	\$290,000	\$314,500	\$318,000	\$349,700	\$340,000	\$370,000						

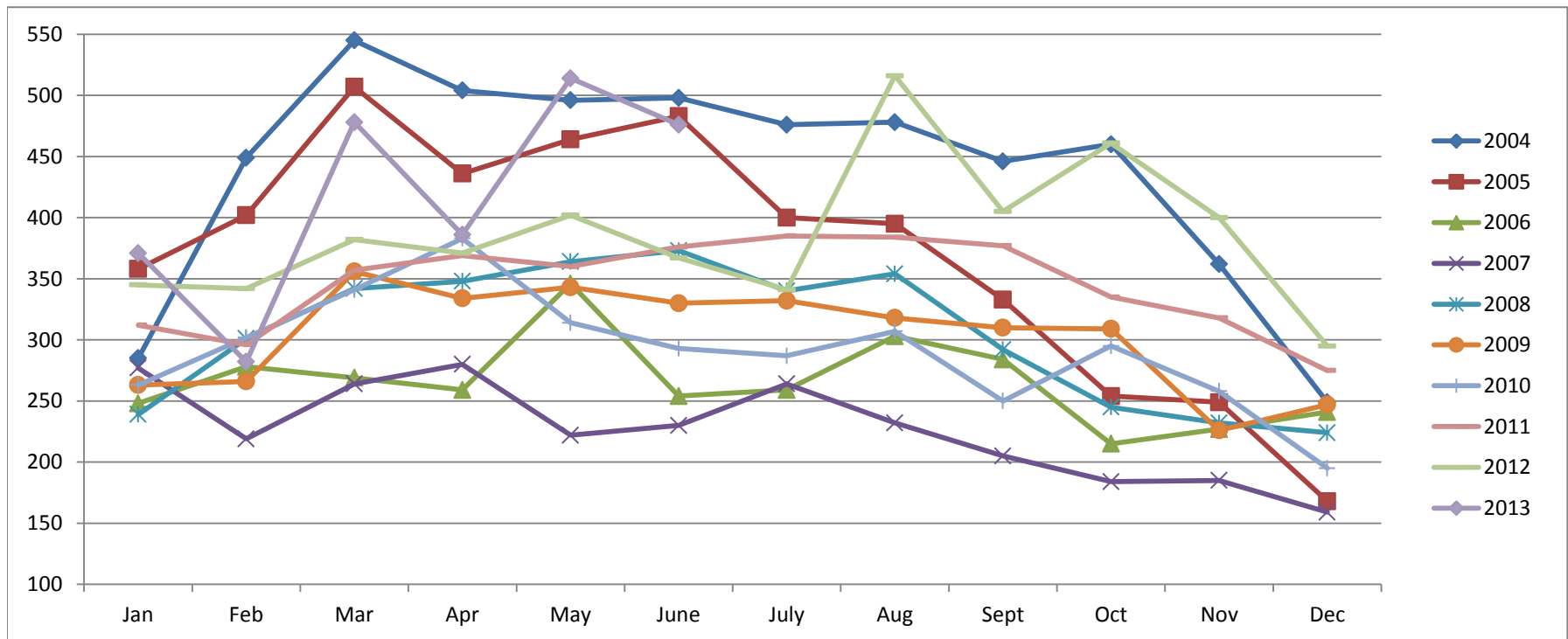


Based on MetroList™ Multiple Listing Service Data. Compiled monthly by PCAR, (916) 624-8271.

Placer County Association of REALTORS® (PCAR) Monthly New Sales Opened (2004-2013)

(Placer County Resale Homes)

	Jan	Feb	Mar	Apr	May	June	July	Aug	Sept	Oct	Nov	Dec
2004	285	449	545	504	496	498	476	478	446	460	362	249
2005	358	402	507	436	464	483	400	395	333	254	249	168
2006	248	278	269	259	346	254	259	303	284	215	227	241
2007	277	219	264	280	222	230	264	232	205	184	185	159
2008	239	301	342	348	364	373	340	354	292	245	232	224
2009	263	266	356	334	343	330	332	318	310	309	226	247
2010	263	302	341	383	314	293	287	307	250	295	258	195
2011	312	296	357	369	360	376	385	384	377	335	318	275
2012	345	342	382	371	402	367	341	516	405	461	400	295
2013	371	282	478	386	514	476						



Based on MetroList™ Multiple Listing Service Data. Compiled monthly by PCAR, (916) 624-8271.