

MLS Statistics

JUNE 2012 - Placer County

RESIDENTIAL ONLY (Single Family Homes)

Preliminary Report

	Current Month	Last Month	% Change	Last Year	% Change
New Listings Published	504	543	-7.2%	580	-13.1%
Listing Inventory	1,435	1,433	0.1%	2,126	-32.5%
Number of New Escrows	367	402	-8.7%	376	-2.4%
Number of Closed Escrows	500	525	-4.8%	469	6.6%
Median (1)	\$280,000	\$272,000	2.9%	\$247,500	13.1%
Mean (2)	\$328,510	\$315,056	4.3%	\$316,686	3.7%
Mode (3)	\$250,000	200,000	NA	\$200,000 to	NA
	\$299,999	\$249,999		\$249,999	

YEAR-TO-DATE STATISTICS

	01/01/12 to 06/30/12	01/01/12 to 05/31/12	01/01/11 to 06/30/11	% Change
New Listings Published	3,066	2,562	3,028	1.3%
Number of New Escrows Opened	2,219	1,852	2,070	7.2%
Number of Closed Escrows	2,713	2,213	2,470	9.8%
Dollar Volume of Closed Escrows	\$826,044,195	\$661,789,190	\$758,759,230	8.9%
Median	\$267,250	\$298,802	\$247,500	8.0%
Mean	\$304,274	\$265,000	\$316,686	-3.9%

PRICE BRACKET OF SALES BASED ON FINAL SALES

Selling Price	Singlefamily Residential	Percent of Total	Condos	Resid. Income	Resid. Lots/Land
UNDER \$69,999	3	0.6%	6	Jan-00	4
\$70,000-\$79,999	5	1.0%	4	0	1
\$80,000-\$89,999	3	0.6%	3	0	1
\$90,000-\$99,999	1	0.2%	6	0	0
\$100,000-\$119,999	9	1.8%	3	0	0
\$120,000-\$139,999	11	2.2%	5	0	3
\$140,000-\$159,999	16	3.2%	2	0	1
\$160,000-\$179,999	22	4.4%	1	1	1
\$180,000-\$199,999	27	5.4%	3	1	1
\$200,000-\$249,999	80	16.0%	2	1	1
\$250,000-\$299,999	98	19.6%	0	1	0
\$300,000-\$349,999	53	10.6%	1	0	0
\$350,000-\$399,999	52	10.4%	0	1	0
\$400,000-\$449,999	32	6.4%	0	0	0
\$450,000-\$499,999	24	4.8%	0	0	0
\$500,000-\$749,999	47	9.4%	0	0	1
\$750,000-\$999,999	11	2.2%	0	0	0
OVER \$1,000,000	6	1.2%	0	0	0
TOTAL	500		36	5	14

Selling Prices of Classes Listed Above

\$89,999 or less	5.4%
\$90,000-\$139,999	6.8%
\$140,000-\$179,999	7.9%
\$180,000-\$299,999	38.7%
\$300,000-\$399,999	19.3%
\$400,000-\$749,999	18.7%
\$750,000 and over	3.1%



TYPE OF FINANCING OF UNITS SOLD

Financing	# of Units
Cash	146
Conventional	222
FHA	87
VA	35
Other	10

LENGTH OF TIME ON MARKET

Days on Market	# of units	% of total
1-30 Days	285	52.4%
31-60 Days	67	12.3%
61-90 Days	59	10.8%
91-120 Days	38	7.0%
121+Days	95	17.5%

This representation is based in whole or part on data supplied by MetroList. MetroList does not guarantee nor is it in any way responsible for its accuracy. Data maintained by MetroList may not reflect all real estate activity in the market. All information provided is deemed reliable but is not guaranteed and should be independently verified.

1. Median: The midpoint at which an equal number of homes sold above and below this value.
2. Mean: The arithmetic average of the total number of residential sales divided into total residential sales dollar volume.
3. Mode: The price range within which the most number of homes were sold.



Home Sales Report JUNE 2012

Number of New Listing: 504 Total Sales Reported Last Month: 525
 Number of New Listings Last Month: 543 Sales Volume: \$164,255,005
 Total Sales Reported: 500 Average Sales Price: \$328,510

These figures are based on MetroList Multiple Listing Service Data. Compiled monthly by PCAR, (916) 624-8271

ALL AREAS		# Sold	Avg. Sale Price	Last Month	Last Year	
Total Sales	500	Condos	36	\$118,672	\$120,114	\$113,621
Pending Sales	367	Houses	500	\$328,510	\$315,056	\$316,686
Total Number of Listings	1,435	2 Bedrooms	65	\$267,766	\$257,760	\$273,771
Median Sales Price	\$280,000	3 Bedrooms	211	\$267,954	\$256,636	\$242,561
Average Sales Price	\$328,510	4+ Bedrooms	224	\$403,179	\$377,465	\$393,871

Breakdown By Areas

Area 12747, 12661, 12668, 12678 Roseville				Last Year	Area 12650, 12663 Loomis, Penryn				Last Year
Total Sales:	182			150	Total Sales:	23			14
Pending Sales	142			123	Pending Sales	18			10
Total Number of Listings	459			695	Total Number of Listings	77			106
Median Sales Price	\$268,000			\$240,000	Median Sales Price	\$469,900			\$290,500
Average Sales Price	\$296,293			\$274,990	Average Sales Price	\$460,309			\$443,957
	<u>#Sold</u>	<u>Avg. Sales Price</u>	<u>Last Month</u>			<u>#Sold</u>	<u>Avg. Sales Price</u>	<u>Last Month</u>	<u>Last Year</u>
Condos	19	\$114,221	\$126,656	\$108,772	Condos	0	\$0	\$0	\$0
Houses	182	\$296,293	\$290,098	\$274,990	Houses	23	\$460,309	\$500,773	\$443,957
2 Bedrooms	16	\$216,250	\$210,736	\$209,869	2 Bedrooms	0	\$0	\$264,500	\$75,000
3 Bedrooms	77	\$242,033	\$244,940	\$242,283	3 Bedrooms	15	\$405,400	\$270,056	\$227,900
4+ Bedrooms	89	\$357,628	\$361,272	\$329,418	4+ Bedrooms	8	\$563,263	\$732,500	\$681,857

Area 12746 Granite Bay				Last Year	Area 12201-12208 Lincoln				Last Year
Total Sales:	30			33	Total Sales:	102			107
Pending Sales	19			20	Pending Sales	77			79
Total Number of Listings	116			147	Total Number of Listings	231			430
Median Sales Price	\$520,000			\$600,000	Median Sales Price	\$263,750			\$239,000
Average Sales Price	\$650,124			\$649,198	Average Sales Price	\$296,807			\$284,446
	<u>#Sold</u>	<u>Avg. Sales Price</u>	<u>Last Month</u>	<u>Last Year</u>		<u>#Sold</u>	<u>Avg. Sales Price</u>	<u>Last Month</u>	<u>Last Year</u>
Condos	0	\$0	\$0	\$0	Condos	3	\$139,667	\$135,950	\$143,700
Houses	30	\$650,124	\$698,481	\$649,198	Houses	102	\$296,807	\$273,758	\$284,446
2 Bedrooms	0	\$0	\$0	\$219,000	2 Bedrooms	26	\$362,150	\$326,820	\$350,773
3 Bedrooms	8	\$352,776	\$617,375	\$395,083	3 Bedrooms	38	\$237,412	\$209,972	\$208,088
4+ Bedrooms	22	\$758,250	\$725,517	\$724,387	4+ Bedrooms	38	\$311,493	\$293,305	\$301,015

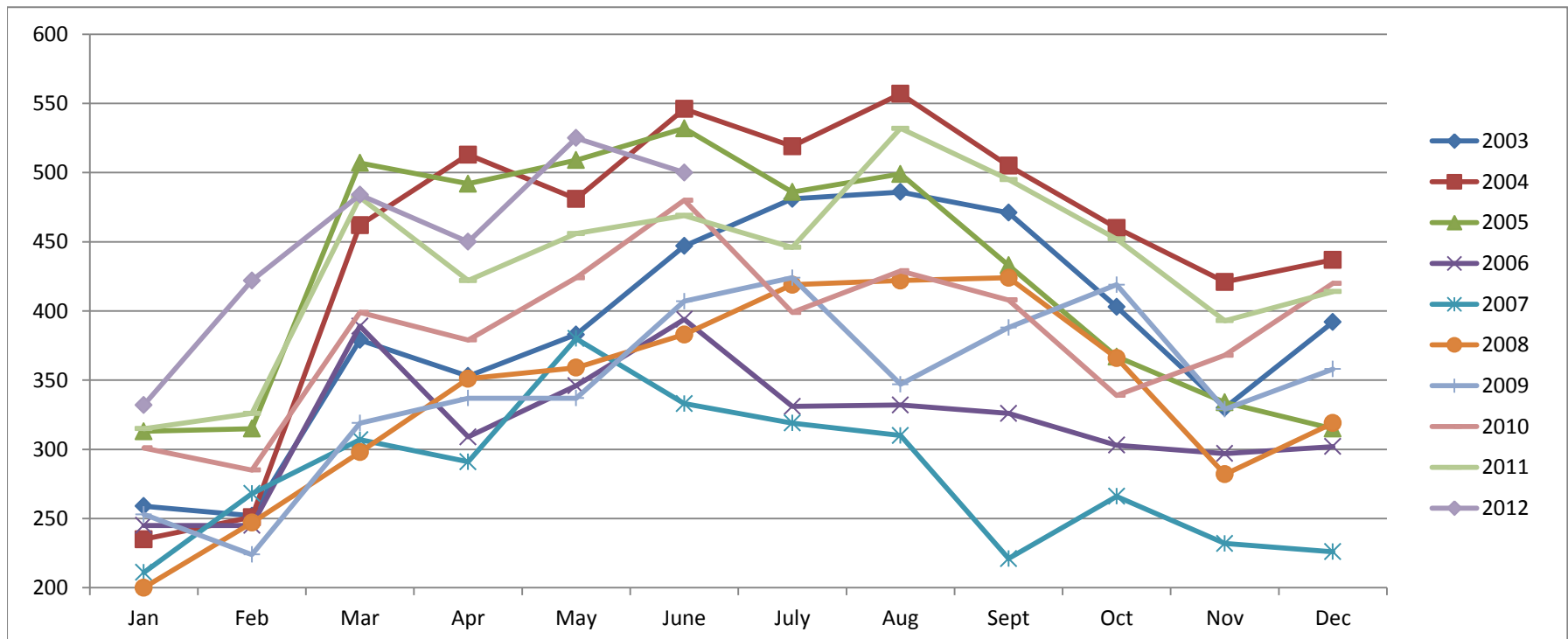
Area 12301, 12306, 12307, 12658, Auburn, Newcastle				Last Year	Area 12302, 12303, 12305 MV,GV,CX,AG,Wei,BC				Last Year
Total Sales:	55			41	Total Sales:	24			30
Pending Sales	33			37	Pending Sales	24			19
Total Number of Listings	181			213	Total Number of Listings	140			162
Median Sales Price	\$273,000			\$196,000	Median Sales Price	\$262,500			\$222,500
Average Sales Price	\$289,496			\$301,355	Average Sales Price	\$292,063			\$289,331
	<u>#Sold</u>	<u>Avg. Sales Price</u>	<u>Last Month</u>	<u>Last Year</u>		<u>#Sold</u>	<u>Avg. Sales Price</u>	<u>Last Month</u>	<u>Last Year</u>
Condos	6	\$76,333	\$72,500	\$97,564	Condos	0	\$0	\$91,000	\$84,000
Houses	55	\$289,496	\$300,382	\$301,355	Houses	24	\$292,063	\$202,764	\$289,331
2 Bedrooms	6	\$136,258	\$191,383	\$235,000	2 Bedrooms	3	\$122,333	\$163,129	\$119,175
3 Bedrooms	34	\$294,272	\$313,593	\$252,359	3 Bedrooms	14	\$258,750	\$210,992	\$255,462
4+ Bedrooms	15	\$339,967	\$349,059	\$458,452	4+ Bedrooms	7	\$431,429	\$238,504	\$515,667

Area 12677, 12765 Rocklin				Last Year	Area 12304 Foresthill				Last Year
Total Sales:	69			90	Total Sales:	15			4
Pending Sales	50			61	Pending Sales	3			4
Total Number of Listings	178			296	Total Number of Listings	48			68
Median Sales Price	\$315,000			\$260,000	Median Sales Price	\$200,000			\$225,500
Average Sales Price	\$347,557			\$301,916	Average Sales Price	\$203,415			\$209,440
	<u>#Sold</u>	<u>Avg. Sales Price</u>	<u>Last Month</u>	<u>Last Year</u>		<u>#Sold</u>	<u>Avg. Sales Price</u>	<u>Last Month</u>	<u>Last Year</u>
Condos	8	\$124,375	\$110,267	\$127,216	Condos	0	\$0	\$0	\$0
Houses	69	\$347,557	\$283,392	\$301,916	Houses	15	\$203,415	\$231,809	\$209,444
2 Bedrooms	10	\$284,050	\$251,700	\$258,700	2 Bedrooms	4	\$125,950	\$194,725	\$0
3 Bedrooms	19	\$276,983	\$234,064	\$241,953	3 Bedrooms	6	\$181,071	\$186,200	\$161,889
4+ Bedrooms	40	\$396,957	\$323,154	\$336,827	4+ Bedrooms	5	\$292,200	\$420,000	\$257,000

Placer County Association of REALTORS® (PCAR) Monthly Closed Escrows (2003-2012)

(Placer County Resale Homes)

	<i>Jan</i>	<i>Feb</i>	<i>Mar</i>	<i>Apr</i>	<i>May</i>	<i>June</i>	<i>July</i>	<i>Aug</i>	<i>Sept</i>	<i>Oct</i>	<i>Nov</i>	<i>Dec</i>
2003	259	252	379	353	383	447	481	486	471	403	330	392
2004	235	251	462	513	481	546	519	557	505	460	421	437
2005	313	315	507	492	509	532	486	499	433	367	334	315
2006	245	245	389	309	346	394	331	332	326	303	297	302
2007	211	268	307	291	380	333	319	310	221	266	232	226
2008	200	247	298	351	359	383	419	422	424	366	282	319
2009	253	224	319	337	337	407	424	347	388	419	329	358
2010	301	285	399	379	424	480	399	429	408	339	368	420
2011	315	326	482	422	456	469	446	532	495	452	393	414
2012	332	422	484	450	525	500						

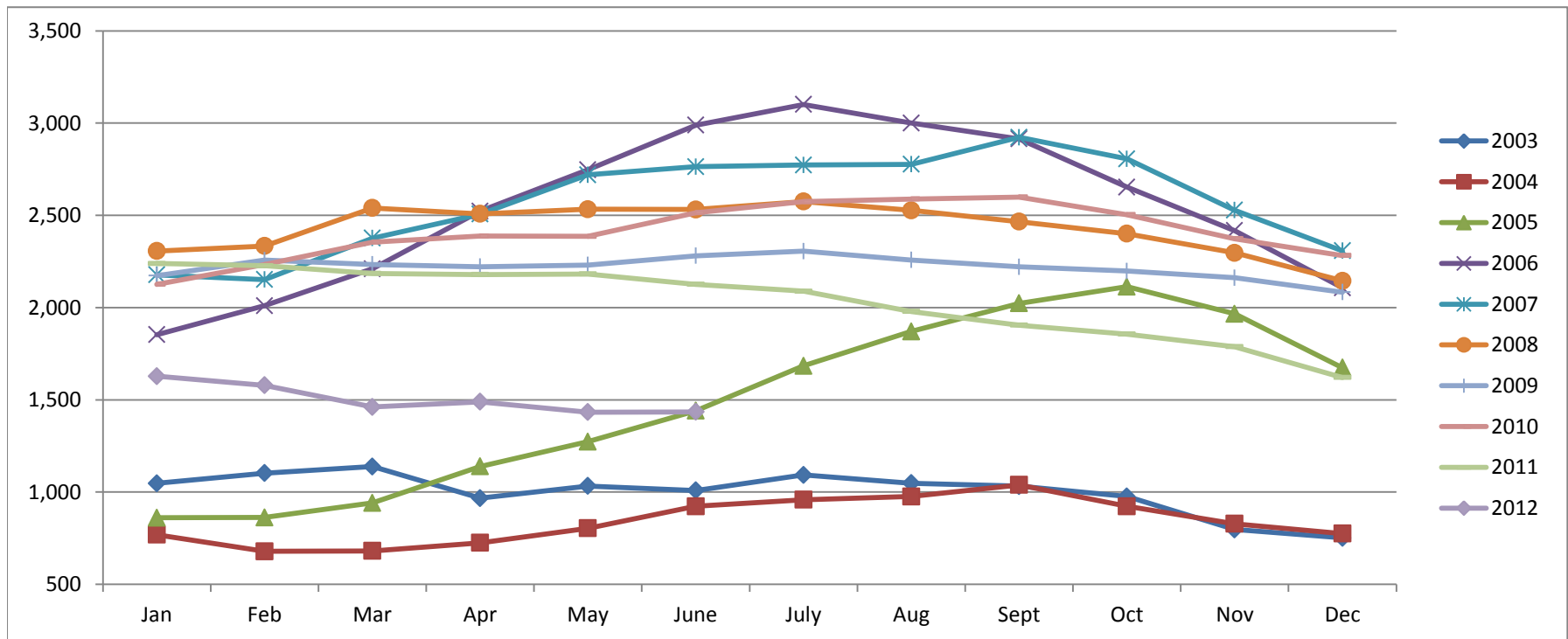


Based on MetroList™ Multiple Listing Service Data. Compiled monthly by PCAR, (916) 624-8271.

Placer County Association of REALTORS® (PCAR) Total Listing Inventory by Month (2003-2012)

(Placer County Resale Homes)

	Jan	Feb	Mar	Apr	May	June	July	Aug	Sept	Oct	Nov	Dec
2003	1,047	1,103	1,138	967	1,033	1,009	1,093	1,048	1,032	976	797	752
2004	769	679	681	725	804	923	959	976	1,039	923	828	775
2005	861	862	941	1,139	1,273	1,441	1,684	1,871	2,023	2,113	1,966	1,674
2006	1,853	2,010	2,210	2,523	2,747	2,989	3,101	3,000	2,915	2,653	2,417	2,107
2007	2,178	2,152	2,376	2,507	2,720	2,764	2,773	2,777	2,923	2,806	2,528	2,308
2008	2,307	2,334	2,540	2,508	2,533	2,532	2,575	2,527	2,466	2,401	2,297	2,145
2009	2,173	2,257	2,234	2,222	2,231	2,281	2,306	2,258	2,221	2,198	2,162	2,084
2010	2,126	2,233	2,355	2,388	2,386	2,514	2,574	2,589	2,599	2,504	2,373	2,282
2011	2,239	2,227	2,185	2,179	2,182	2,126	2,089	1,979	1,905	1,856	1,788	1,621
2012	1,628	1,579	1,461	1,489	1,433	1,435						

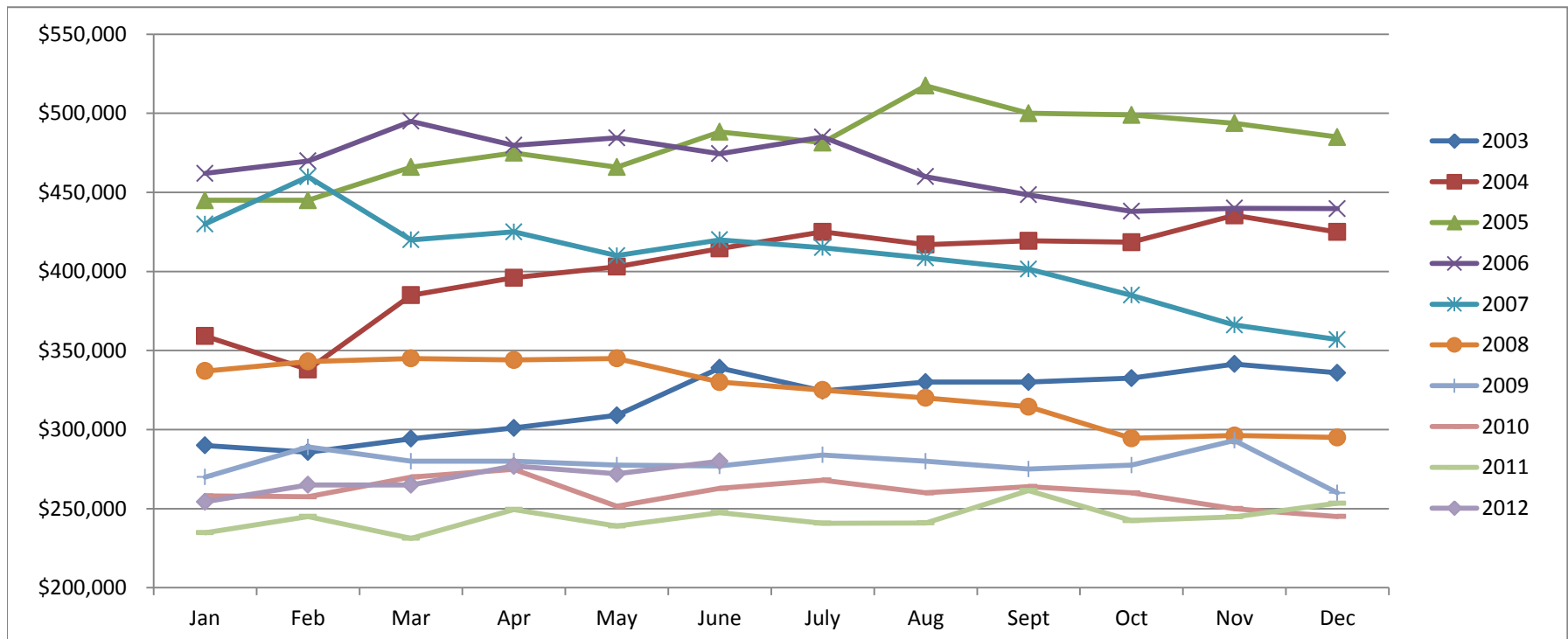


Based on MetroList™ Multiple Listing Service Data. Compiled monthly by PCAR, (916) 624-8271.

Placer County Association of REALTORS® (PCAR) Median Price for Single-Family Detached Homes (2003-2012)

(Placer County Resale Homes)

	Jan	Feb	Mar	Apr	May	June	July	Aug	Sept	Oct	Nov	Dec
2003	\$290,000	\$285,750	\$294,250	\$301,000	\$309,000	\$339,000	\$324,500	\$330,000	\$330,000	\$332,500	\$341,410	\$335,900
2004	\$359,100	\$338,000	\$385,000	\$396,000	\$403,000	\$414,500	\$425,000	\$417,000	\$419,350	\$418,500	\$435,500	\$424,975
2005	\$445,000	\$445,000	\$466,000	\$475,000	\$466,000	\$488,250	\$481,500	\$517,500	\$500,000	\$499,000	\$493,750	\$485,000
2006	\$462,000	\$469,900	\$495,000	\$479,800	\$484,500	\$474,500	\$485,000	\$460,000	\$448,500	\$438,000	\$439,974	\$439,700
2007	\$430,000	\$459,900	\$419,950	\$425,000	\$410,000	\$420,000	\$415,000	\$408,500	\$401,500	\$385,000	\$366,087	\$356,928
2008	\$337,000	\$343,000	\$345,000	\$344,000	\$345,000	\$330,000	\$325,000	\$320,000	\$314,450	\$294,450	\$296,217	\$295,000
2009	\$270,000	\$289,000	\$280,000	\$280,000	\$277,500	\$277,000	\$283,950	\$280,000	\$275,000	\$277,500	\$293,116	\$260,000
2010	\$258,000	\$257,500	\$270,000	\$274,950	\$251,500	\$262,803	\$268,000	\$260,000	\$264,000	\$260,000	\$250,000	\$245,000
2011	\$234,750	\$245,000	\$231,250	\$249,450	\$239,000	\$247,500	\$240,750	\$241,000	\$261,500	\$242,500	\$244,900	\$253,450
2012	\$254,325	\$265,000	\$265,000	\$277,000	\$272,000	\$280,000						

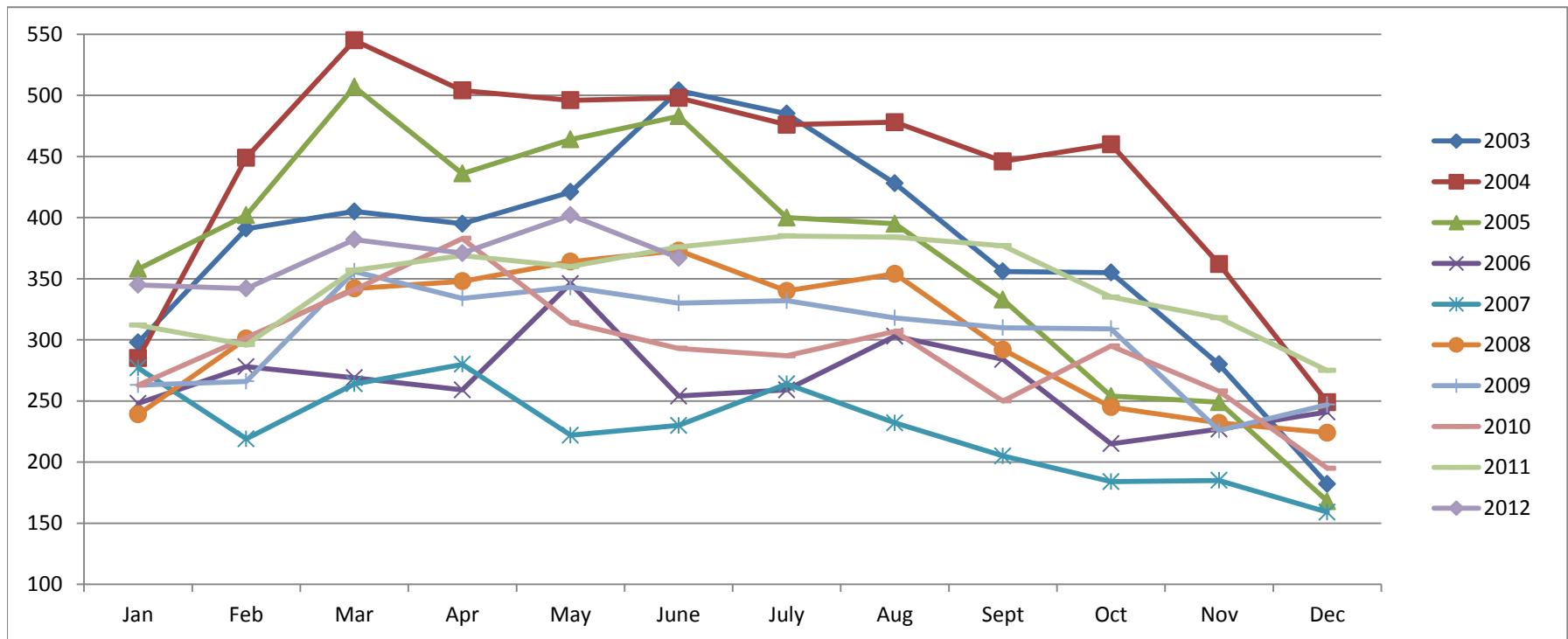


Based on MetroList™ Multiple Listing Service Data. Compiled monthly by PCAR, (916) 624-8271.

Placer County Association of REALTORS® (PCAR) Monthly New Sales Opened (2003-2012)

(Placer County Resale Homes)

	Jan	Feb	Mar	Apr	May	June	July	Aug	Sept	Oct	Nov	Dec
2003	298	391	405	395	421	504	485	428	356	355	280	182
2004	285	449	545	504	496	498	476	478	446	460	362	249
2005	358	402	507	436	464	483	400	395	333	254	249	168
2006	248	278	269	259	346	254	259	303	284	215	227	241
2007	277	219	264	280	222	230	264	232	205	184	185	159
2008	239	301	342	348	364	373	340	354	292	245	232	224
2009	263	266	356	334	343	330	332	318	310	309	226	247
2010	263	302	341	383	314	293	287	307	250	295	258	195
2011	312	296	357	369	360	376	385	384	377	335	318	275
2012	345	342	382	371	402	367						



Based on MetroList™ Multiple Listing Service Data. Compiled monthly by PCAR, (916) 624-8271.