

MLS Statistics

July 2014 - Placer County

RESIDENTIAL ONLY (Single Family Homes)

Preliminary Report

	Current Month	Last Month	% Change	Last Year	% Change
New Listings Published	633	676	-6.4%	554	14.3%
Listing Inventory	1,462	1,425	2.6%	988	48.0%
Number of New Escrows	403	425	-5.2%	391	3.1%
Number of Closed Escrows	541	505	7.1%	574	-5.7%
Median (1)	\$379,000	\$380,000	-0.3%	\$370,000	2.4%
Mean (2)	\$409,442	\$422,206	-3.0%	\$409,191	0.1%
Mode (3)	\$300,000 to \$349,999	\$300,000 to \$349,999	NA	\$250,000 to \$299,999	NA

YEAR-TO-DATE STATISTICS

	01/01/14 to 07/31/14	01/01/14 to 06/30/14	01/01/13 to 07/31/13	% Change
New Listings Published	4,422	3,789	3,955	11.8%
Number of New Escrows Opened	2,573	2,170	2,491	3.3%
Number of Closed Escrows	3,082	2,537	3,421	-9.9%
Dollar Volume of Closed Escrows	\$1,271,345,530	\$1,048,512,252	\$1,304,100,099	-2.5%
Median	\$372,000	\$370,000	\$340,000	9.4%
Mean	\$412,507	\$413,288	\$381,204	8.2%

PRICE BRACKET OF SALES BASED ON FINAL SALES

Selling Price	Singlefamily Residential	Percent of Total	Condos	Resid. Income	Resid. Lots/Land
UNDER \$69,999	1	0.2%	1	0	2
\$70,000-\$79,999	1	0.2%	0	0	0
\$80,000-\$89,999	0	0.0%	1	0	1
\$90,000-\$99,999	1	0.2%	0	0	0
\$100,000-\$119,999	0	0.0%	2	0	0
\$120,000-\$139,999	5	0.9%	3	0	1
\$140,000-\$159,999	3	0.6%	2	0	2
\$160,000-\$179,999	3	0.6%	4	0	1
\$180,000-\$199,999	4	0.7%	3	1	0
\$200,000-\$249,999	37	6.8%	8	2	1
\$250,000-\$299,999	68	12.6%	0	0	2
\$300,000-\$349,999	92	17.0%	0	0	0
\$350,000-\$399,999	90	16.6%	0	1	0
\$400,000-\$449,999	77	14.2%	0	1	1
\$450,000-\$499,999	55	10.2%	0	0	0
\$500,000-\$749,999	86	15.9%	0	0	2
\$750,000-\$999,999	11	2.0%	0	0	0
OVER \$1,000,000	7	1.3%	0	0	0
TOTAL	541		24	5	13

Selling Prices of Classes Listed Above

\$89,999 or less	1.2%
\$90,000-\$139,999	2.1%
\$140,000-\$179,999	2.6%
\$180,000-\$299,999	21.6%
\$300,000-\$399,999	31.4%
\$400,000-\$749,999	38.1%
\$750,000 and over	3.1%



TYPE OF FINANCING OF UNITS SOLD

Financing	# of Units
Cash	109
Conventional	298
FHA	93
VA	45
Other	25

LENGTH OF TIME ON MARKET

Days on Market	# of units	% of total
1-30 Days	337	59.1%
31-60 Days	122	21.4%
61-90 Days	63	11.1%
91-120 Days	23	4.0%
121+Days	25	4.4%

This representation is based in whole or part on data supplied by MetroList. MetroList does not guarantee nor is it in any way responsible for its accuracy. Data maintained by MetroList may not reflect all real estate activity in the market. All information provided is deemed reliable but is not guaranteed and should be independently verified.

1. Median: The midpoint at which an equal number of homes sold above and below this value.
2. Mean: The arithmetic average of the total number of residential sales divided into total residential sales dollar volume.
3. Mode: The price range within which the most number of homes were sold.



Home Sales Report - July 2014

Number of New Listing: 633 Total Sales Reported Last Month: 505
 Number of New Listings Last Month: 676 Sales Volume: \$221,508,278
 Total Sales Reported: 541 Average Sales Price: \$409,442

These figures are based on MetroList Multiple Listing Service Data. Compiled monthly by PCAR, (916) 624-8271

ALL AREAS		# Sold	Avg. Sale Price	Last Month	Last Year	
Total Sales	541	Condos	24	\$178,250	\$169,084	\$161,035
Pending Sales	403	Houses	541	\$409,442	\$422,206	\$409,191
Total Number of Listings	1,462	2 Bedrooms	66	\$327,614	\$346,319	\$318,991
Median Sales Price	\$379,000	3 Bedrooms	244	\$347,918	\$357,247	\$350,487
Average Sales Price	\$409,442	4+ Bedrooms	231	\$497,809	\$519,840	\$498,784

Breakdown By Areas

Area 12747, 12661, 12668, 12678 Roseville					Area 12650, 12663 Loomis, Penryn						
				Last Year					Last Year		
Total Sales:				215	203	Total Sales:				23	20
Pending Sales				142	134	Pending Sales				15	18
Total Number of Listings				445	297	Total Number of Listings				83	55
Median Sales Price				\$365,000	\$350,000	Median Sales Price				\$505,000	\$467,500
Average Sales Price				\$381,919	\$368,001	Average Sales Price				\$547,739	\$642,294
#Sold	Avg. Sales Price	Last Month	Last Year					#Sold	Avg. Sales Price	Last Month	Last Year
Condos	6	\$141,000	\$190,214	\$187,586	Condos	1	\$210,000	\$0	\$0		
Houses	215	\$381,919	\$393,227	\$368,001	Houses	23	\$547,739	\$569,769	\$642,294		
2 Bedrooms	17	\$280,941	\$303,698	\$288,300	2 Bedrooms	1	\$283,500	\$247,500	\$0		
3 Bedrooms	111	\$342,997	\$349,489	\$323,248	3 Bedrooms	12	\$473,625	\$383,623	\$410,386		
4+ Bedrooms	87	\$451,309	\$468,104	\$435,707	4+ Bedrooms	10	\$663,100	\$859,750	\$832,036		

Area 12746 Granite Bay					Area 12201-12209 Lincoln						
				Last Year					Last Year		
Total Sales:				28	37	Total Sales:				98	118
Pending Sales				27	26	Pending Sales				75	71
Total Number of Listings				144	116	Total Number of Listings				226	146
Median Sales Price				\$612,450	\$655,000	Median Sales Price				\$348,950	\$322,500
Average Sales Price				\$759,902	\$743,589	Average Sales Price				\$356,458	\$373,299
#Sold	Avg. Sales Price	Last Month	Last Year					#Sold	Avg. Sales Price	Last Month	Last Year
Condos	0	\$0	\$0	\$0	Condos	8	\$203,356	\$191,250	\$220,000		
Houses	28	\$759,902	\$726,893	\$743,589	Houses	98	\$356,458	\$398,311	\$373,299		
2 Bedrooms	1	\$360,000	\$310,000	\$0	2 Bedrooms	27	\$382,430	\$411,348	\$406,535		
3 Bedrooms	6	\$528,183	\$451,333	\$537,270	3 Bedrooms	33	\$286,234	\$341,736	\$308,776		
4+ Bedrooms	21	\$845,151	\$825,476	\$820,004	4+ Bedrooms	38	\$398,989	\$437,356	\$420,561		

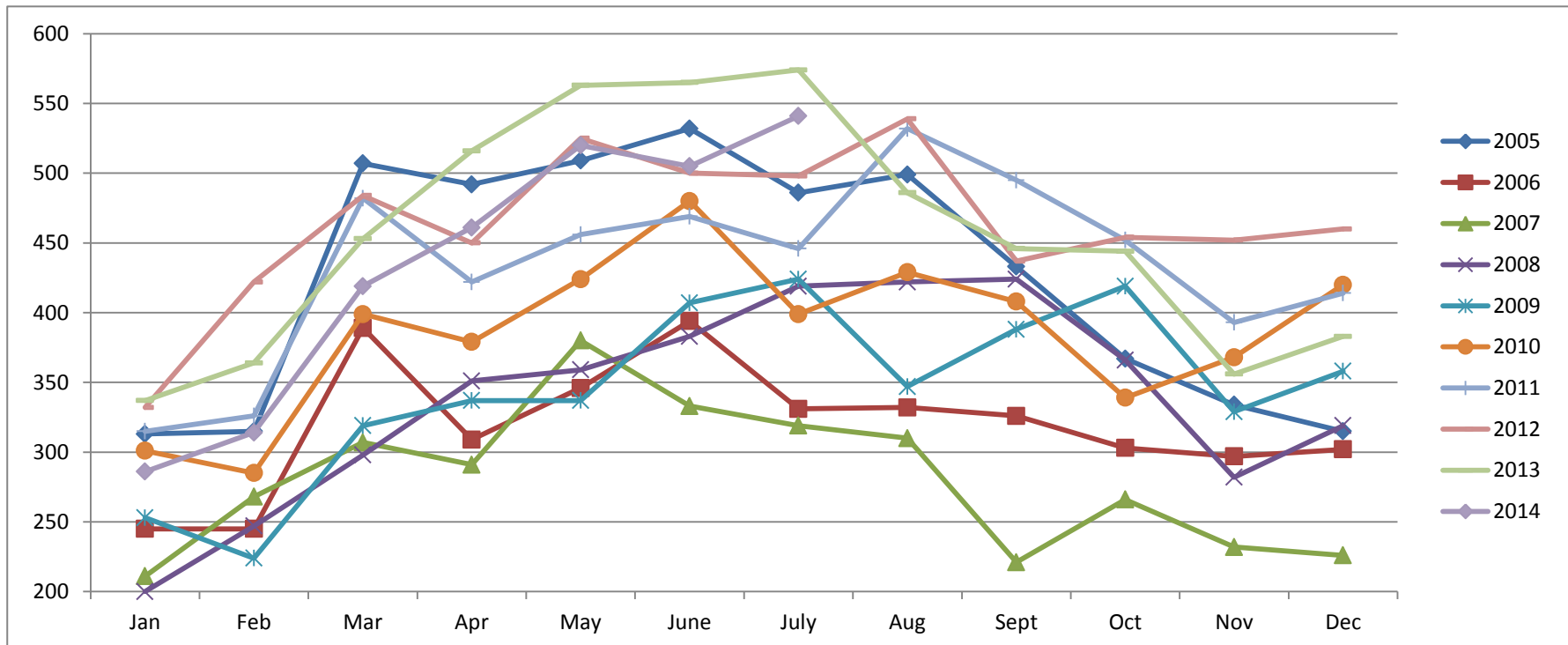
Area 12301, 12306, 12307, 12658, Auburn, Newcastle					Area 12302, 12303, 12305 MV,CV,CX,AG,Wei,BC						
				Last Year					Last Year		
Total Sales:				53	67	Total Sales:				35	28
Pending Sales				33	46	Pending Sales				30	19
Total Number of Listings				175	117	Total Number of Listings				141	100
Median Sales Price				\$399,900	\$354,000	Median Sales Price				\$330,000	\$325,000
Average Sales Price				\$447,362	\$379,561	Average Sales Price				\$329,110	\$300,893
#Sold	Avg. Sales Price	Last Month	Last Year					#Sold	Avg. Sales Price	Last Month	Last Year
Condos	3	\$122,967	\$170,667	\$112,671	Condos	1	\$150,000	\$0	\$0		
Houses	53	\$447,362	\$434,656	\$379,561	Houses	35	\$329,110	\$322,440	\$300,893		
2 Bedrooms	5	\$312,400	\$27	\$256,870	2 Bedrooms	7	\$290,057	\$220,405	\$131,222		
3 Bedrooms	32	\$383,237	\$377,320	\$389,200	3 Bedrooms	22	\$320,248	\$375,333	\$388,923		
4+ Bedrooms	21	\$561,942	\$551,167	\$429,053	4+ Bedrooms	6	\$407,167	\$430,167	\$364,667		

Area 12677, 12765 Rocklin					Area 12304 Foresthill						
				Last Year					Last Year		
Total Sales:				79	91	Total Sales:				10	10
Pending Sales				67	58	Pending Sales				13	14
Total Number of Listings				200	112	Total Number of Listings				41	35
Median Sales Price				\$389,000	\$410,000	Median Sales Price				\$298,000	\$363,500
Average Sales Price				\$409,778	\$423,005	Average Sales Price				\$298,618	\$341,430
#Sold	Avg. Sales Price	Last Month	Last Year					#Sold	Avg. Sales Price	Last Month	Last Year
Condos	5	\$180,378	\$165,986	\$166,000	Condos	0	\$0	\$0	\$0		
Houses	79	\$409,778	\$429,630	\$423,005	Houses	10	\$298,618	\$298,527	\$341,430		
2 Bedrooms	5	\$353,800	\$318,117	\$391,000	2 Bedrooms	3	\$172,000	\$129,825	\$172,500		
3 Bedrooms	27	\$340,347	\$358,636	\$350,388	3 Bedrooms	6	\$323,133	\$270,071	\$364,067		
4+ Bedrooms	47	\$455,618	\$482,816	\$469,706	4+ Bedrooms	1	\$531,376	\$517,025	\$442,450		

Placer County Association of REALTORS® (PCAR) Monthly Closed Escrows (2005-2014)

(Placer County Resale Homes)

	Jan	Feb	Mar	Apr	May	June	July	Aug	Sept	Oct	Nov	Dec
2005	313	315	507	492	509	532	486	499	433	367	334	315
2006	245	245	389	309	346	394	331	332	326	303	297	302
2007	211	268	307	291	380	333	319	310	221	266	232	226
2008	200	247	298	351	359	383	419	422	424	366	282	319
2009	253	224	319	337	337	407	424	347	388	419	329	358
2010	301	285	399	379	424	480	399	429	408	339	368	420
2011	315	326	482	422	456	469	446	532	495	452	393	414
2012	332	422	484	450	525	500	498	539	437	454	452	460
2013	337	364	453	516	563	565	574	486	446	444	356	383
2014	286	314	419	461	520	505	541					

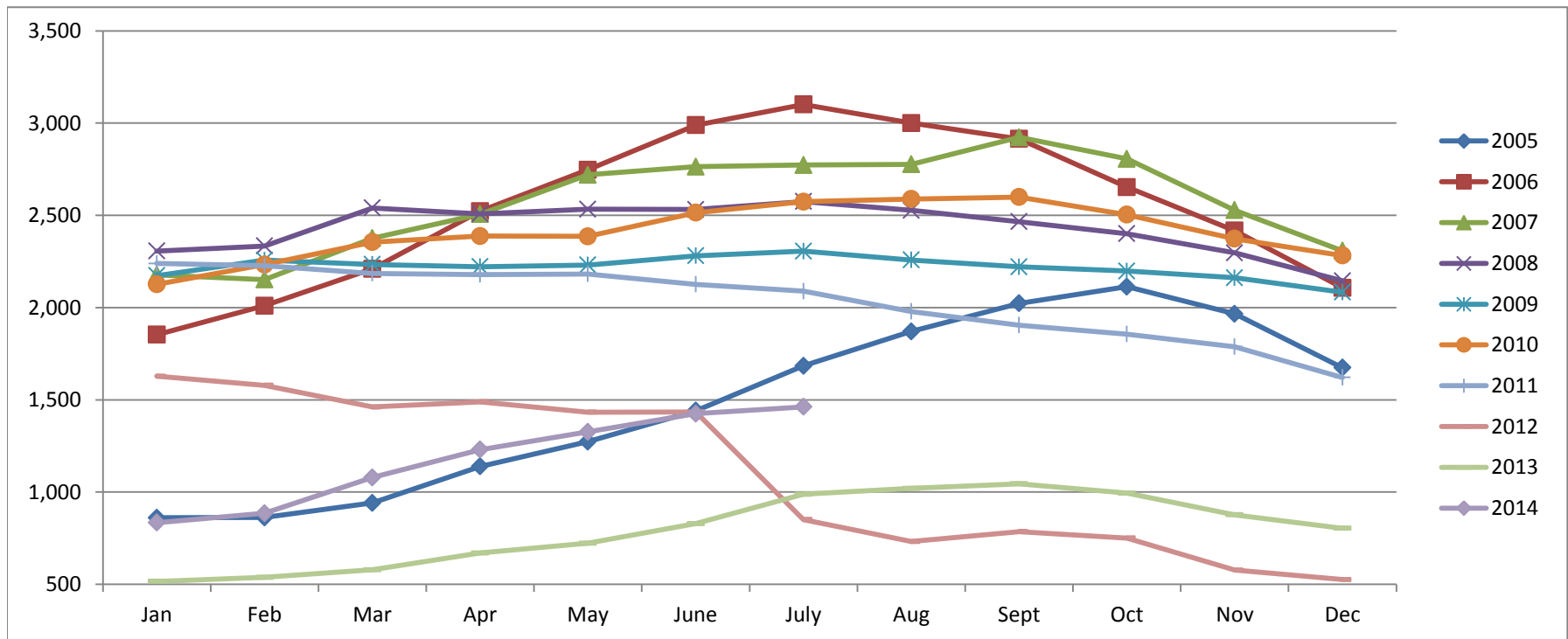


Based on MetroList™ Multiple Listing Service Data. Compiled monthly by PCAR, (916) 624-8271.

Placer County Association of REALTORS® (PCAR) Total Listing Inventory by Month (2005-2014)

(Placer County Resale Homes)

	Jan	Feb	Mar	Apr	May	June	July	Aug	Sept	Oct	Nov	Dec
2005	861	862	941	1,139	1,273	1,441	1,684	1,871	2,023	2,113	1,966	1,674
2006	1,853	2,010	2,210	2,523	2,747	2,989	3,101	3,000	2,915	2,653	2,417	2,107
2007	2,178	2,152	2,376	2,507	2,720	2,764	2,773	2,777	2,923	2,806	2,528	2,308
2008	2,307	2,334	2,540	2,508	2,533	2,532	2,575	2,527	2,466	2,401	2,297	2,145
2009	2,173	2,257	2,234	2,222	2,231	2,281	2,306	2,258	2,221	2,198	2,162	2,084
2010	2,126	2,233	2,355	2,388	2,386	2,514	2,574	2,589	2,599	2,504	2,373	2,282
2011	2,239	2,227	2,185	2,179	2,182	2,126	2,089	1,979	1,905	1,856	1,788	1,621
2012	1,628	1,579	1,461	1,489	1,433	1,435	851	732	786	751	577	526
2013	516	538	579	670	723	829	988	1,020	1,045	994	877	804
2014	834	885	1,079	1,230	1,326	1,425	1,462					

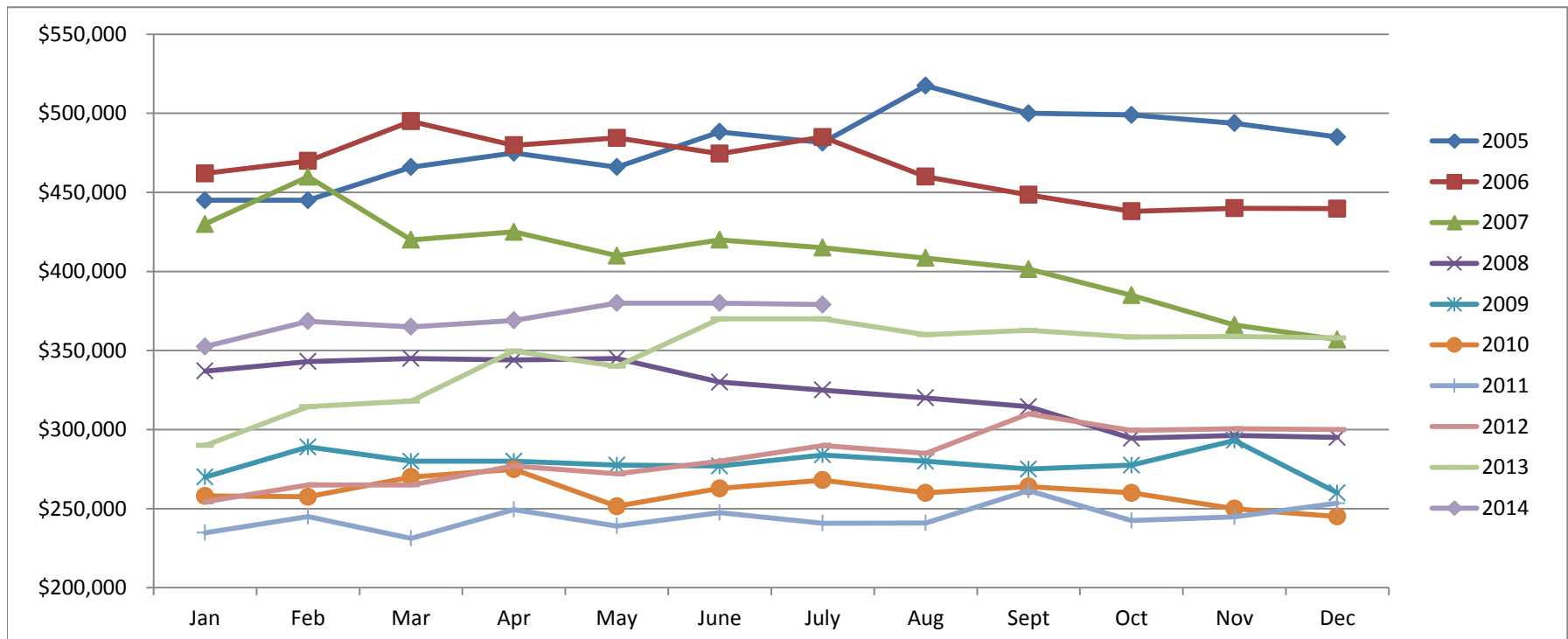


Based on MetroList™ Multiple Listing Service Data. Compiled monthly by PCAR, (916) 624-8271.

Placer County Association of REALTORS® (PCAR) Median Price for Single-Family Detached Homes (2005-2014)

(Placer County Resale Homes)

	Jan	Feb	Mar	Apr	May	June	July	Aug	Sept	Oct	Nov	Dec
2005	\$445,000	\$445,000	\$466,000	\$475,000	\$466,000	\$488,250	\$481,500	\$517,500	\$500,000	\$499,000	\$493,750	\$485,000
2006	\$462,000	\$469,900	\$495,000	\$479,800	\$484,500	\$474,500	\$485,000	\$460,000	\$448,500	\$438,000	\$439,974	\$439,700
2007	\$430,000	\$459,900	\$419,950	\$425,000	\$410,000	\$420,000	\$415,000	\$408,500	\$401,500	\$385,000	\$366,087	\$356,928
2008	\$337,000	\$343,000	\$345,000	\$344,000	\$345,000	\$330,000	\$325,000	\$320,000	\$314,450	\$294,450	\$296,217	\$295,000
2009	\$270,000	\$289,000	\$280,000	\$280,000	\$277,500	\$277,000	\$283,950	\$280,000	\$275,000	\$277,500	\$293,116	\$260,000
2010	\$258,000	\$257,500	\$270,000	\$274,950	\$251,500	\$262,803	\$268,000	\$260,000	\$264,000	\$260,000	\$250,000	\$245,000
2011	\$234,750	\$245,000	\$231,250	\$249,450	\$239,000	\$247,500	\$240,750	\$241,000	\$261,500	\$242,500	\$244,900	\$253,450
2012	\$254,325	\$265,000	\$265,000	\$277,000	\$272,000	\$280,000	\$290,000	\$285,000	\$310,000	\$299,500	\$300,500	\$299,975
2013	\$290,000	\$314,500	\$318,000	\$349,700	\$340,000	\$370,000	\$370,000	\$360,000	\$362,750	\$358,500	\$359,000	\$358,000
2014	\$352,500	\$368,500	\$365,000	\$369,000	\$379,995	\$380,000	\$379,000					

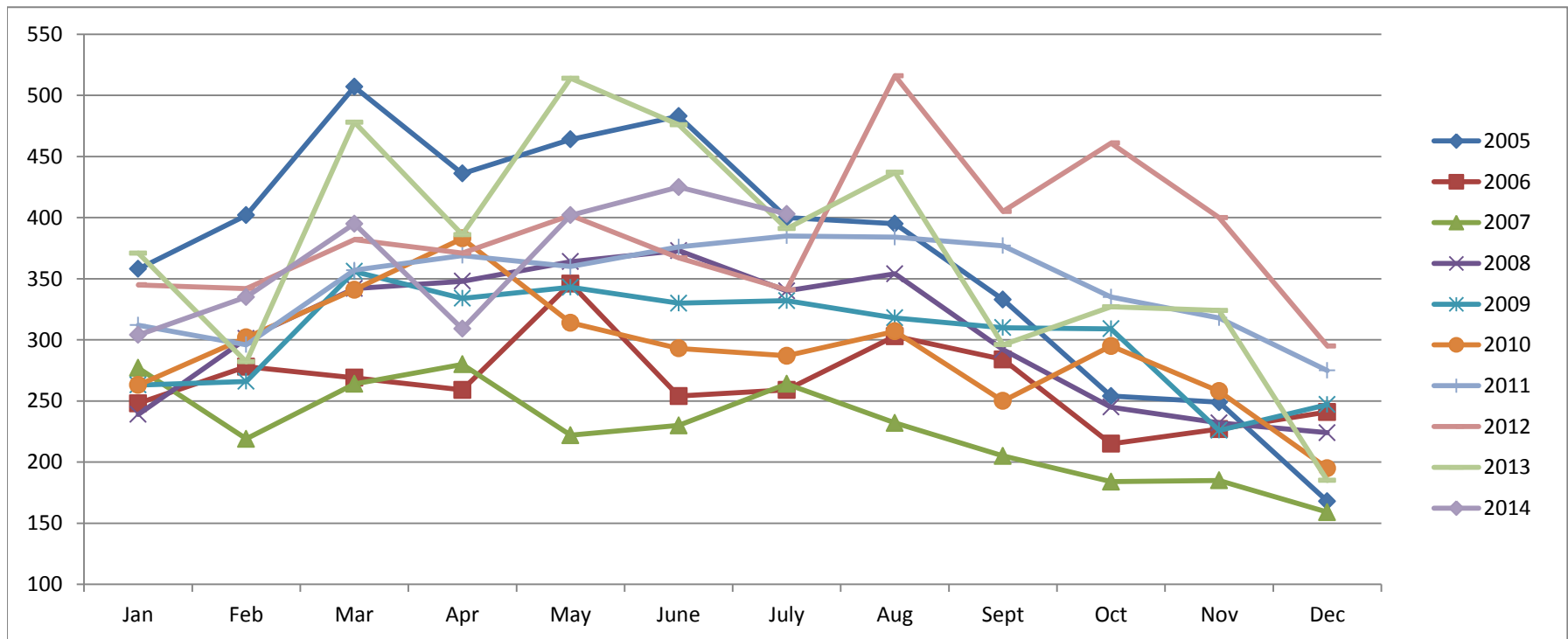


Based on MetroList™ Multiple Listing Service Data. Compiled monthly by PCAR, (916) 624-8271.

Placer County Association of REALTORS® (PCAR) Monthly New Sales Opened (2005-2014)

(Placer County Resale Homes)

	Jan	Feb	Mar	Apr	May	June	July	Aug	Sept	Oct	Nov	Dec
2005	358	402	507	436	464	483	400	395	333	254	249	168
2006	248	278	269	259	346	254	259	303	284	215	227	241
2007	277	219	264	280	222	230	264	232	205	184	185	159
2008	239	301	342	348	364	373	340	354	292	245	232	224
2009	263	266	356	334	343	330	332	318	310	309	226	247
2010	263	302	341	383	314	293	287	307	250	295	258	195
2011	312	296	357	369	360	376	385	384	377	335	318	275
2012	345	342	382	371	402	367	341	516	405	461	400	295
2013	371	282	478	386	514	476	391	437	296	327	324	185
2014	304	335	395	309	402	425	403					



Based on MetroList™ Multiple Listing Service Data. Compiled monthly by PCAR, (916) 624-8271.