

MLS Statistics

January 2013 - Placer County

RESIDENTIAL ONLY (Single Family Homes)

Preliminary Report

	Current Month	Last Month	% Change	Last Year	% Change
New Listings Published	382	305	25.2%	507	-24.7%
Listing Inventory	516	526	-1.9%	1,628	-68.3%
Number of New Escrows	371	295	25.8%	345	7.5%
Number of Closed Escrows	337	460	-26.7%	332	1.5%
Median (1)	\$290,000	\$299,975	-3.3%	\$254,325	14.0%
Mean (2)	\$331,161	\$339,780	-2.5%	\$282,664	17.2%
Mode (3)	\$250,000 to \$299,999	\$250,000 to \$299,999	NA	\$200,000 to \$249,999	NA

YEAR-TO-DATE STATISTICS

	01/01/13 to 01/31/13	01/01/12 to 12/31/12	01/01/12 to 01/31/12	% Change
New Listings Published	382	5,579	507	-24.7%
Number of New Escrows Opened	371	4,483	345	7.5%
Number of Closed Escrows	337	5,665	332	1.5%
Dollar Volume of Closed Escrows	\$111,601,354	\$1,812,298,852	\$93,844,306	18.9%
Median	\$290,000	\$280,000	\$254,325	14.0%
Mean	\$331,161	\$319,912	\$282,664	17.2%

PRICE BRACKET OF SALES BASED ON FINAL SALES

Selling Price	Singlefamily Residential	Percent of Total	Condos	Resid. Income	Resid. Lots/Land
UNDER \$69,999	1	0.3%	0	0	3
\$70,000-\$79,999	0	0.0%	1	0	0
\$80,000-\$89,999	2	0.6%	1	0	0
\$90,000-\$99,999	0	0.0%	0	0	1
\$100,000-\$119,999	3	0.9%	2	0	1
\$120,000-\$139,999	4	1.2%	1	0	1
\$140,000-\$159,999	10	3.0%	3	0	0
\$160,000-\$179,999	17	5.0%	1	0	2
\$180,000-\$199,999	16	4.7%	0	1	1
\$200,000-\$249,999	53	15.7%	1	1	1
\$250,000-\$299,999	72	21.4%	0	0	1
\$300,000-\$349,999	54	16.0%	0	0	0
\$350,000-\$399,999	29	8.6%	0	0	0
\$400,000-\$449,999	20	5.9%	0	0	0
\$450,000-\$499,999	19	5.6%	0	0	0
\$500,000-\$749,999	28	8.3%	0	0	0
\$750,000-\$999,999	7	2.1%	0	0	0
OVER \$1,000,000	2	0.6%	0	0	0
TOTAL	337		10	2	11

Selling Prices of Classes Listed Above

\$89,999 or less	2.2%
\$90,000-\$139,999	3.6%
\$140,000-\$179,999	9.2%
\$180,000-\$299,999	40.8%
\$300,000-\$399,999	23.1%
\$400,000-\$749,999	18.6%
\$750,000 and over	2.5%



TYPE OF FINANCING OF UNITS SOLD

Financing	# of Units
Cash	95
Conventional	166
FHA	21
VA	15
Other	19

LENGTH OF TIME ON MARKET

Days on Market	# of units	% of total
1-30 Days	227	65.0%
31-60 Days	51	14.6%
61-90 Days	30	8.6%
91-120 Days	14	4.0%
121+Days	27	7.7%

This representation is based in whole or part on data supplied by MetroList. MetroList does not guarantee nor is it in any way responsible for its accuracy. Data maintained by MetroList may not reflect all real estate activity in the market. All information provided is deemed reliable but is not guaranteed and should be independently verified.

1. Median: The midpoint at which an equal number of homes sold above and below this value.
2. Mean: The arithmetic average of the total number of residential sales divided into total residential sales dollar volume.
3. Mode: The price range within which the most number of homes were sold.



Home Sales Report - January 2013

Number of New Listing: 382 Total Sales Reported Last Month: 460
 Number of New Listings Last Month: 305 Sales Volume: \$111,601,354
 Total Sales Reported: 337 Average Sales Price: \$331,161

These figures are based on MetroList Multiple Listing Service Data. Compiled monthly by PCAR, (916) 624-8271

ALL AREAS		# Sold	Avg. Sale Price	Last Month	Last Year	
Total Sales	337	Condos	10	\$135,832	\$99,243	\$97,575
Pending Sales	371	Houses	337	\$331,161	\$339,780	\$282,664
Total Number of Listings	516	2 Bedrooms	46	\$245,932	\$277,266	\$223,224
Median Sales Price	\$290,000	3 Bedrooms	145	\$276,123	\$290,434	\$238,968
Average Sales Price	\$331,161	4+ Bedrooms	146	\$412,675	\$405,578	\$343,974

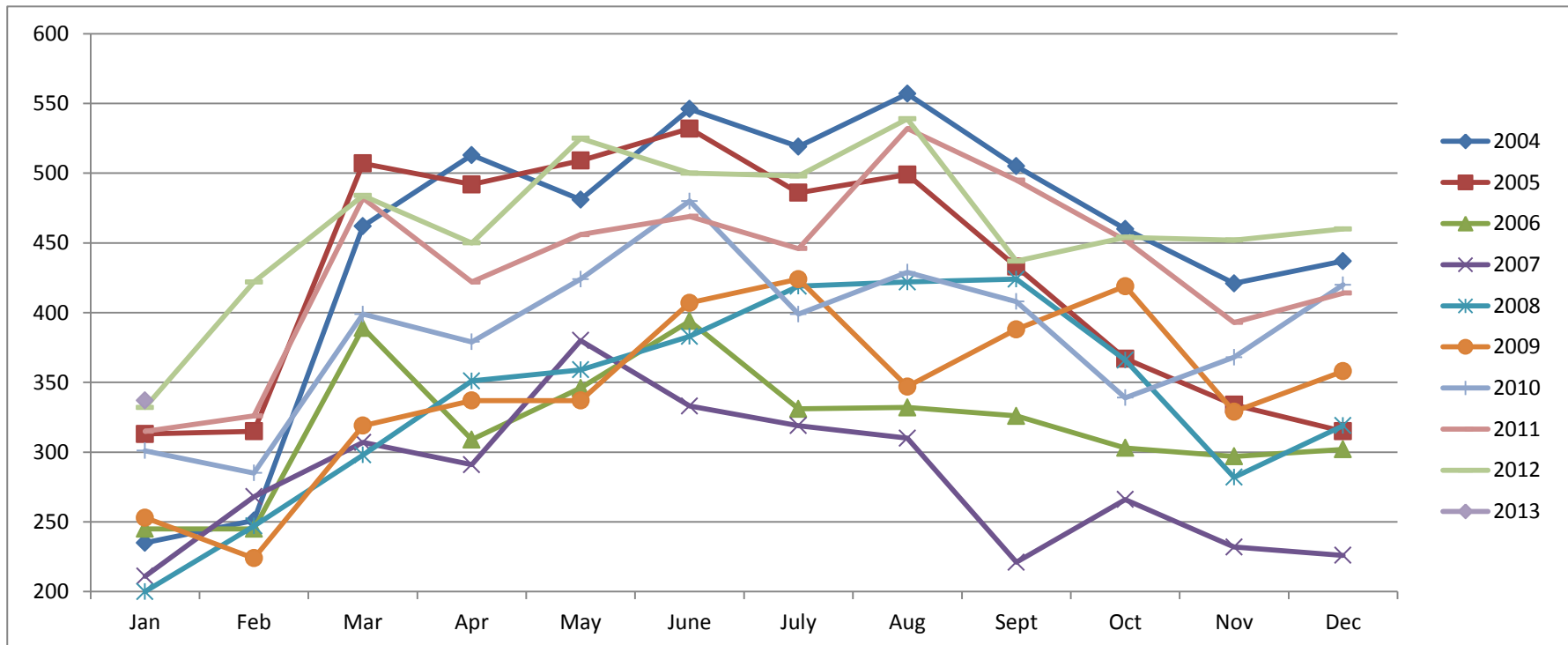
Breakdown By Areas

Area 12747, 12661, 12668, 12678 Roseville				Last Year	Area 12650, 12663 Loomis, Penryn				Last Year		
Total Sales:	123			123	Total Sales:	12			14		
Pending Sales	125			122	Pending Sales	14			11		
Total Number of Listings	115			571	Total Number of Listings	40			64		
Median Sales Price	\$280,000			\$248,000	Median Sales Price				\$413,875	\$360,000	
Average Sales Price	\$298,015			\$254,450	Average Sales Price				\$476,479	\$408,686	
	<u>#Sold</u>	<u>Avg. Sales Price</u>	<u>Last Month</u>	<u>Last Year</u>		<u>#Sold</u>	<u>Avg. Sales Price</u>	<u>Last Month</u>	<u>Last Year</u>		
Condos	7	\$129,546	\$118,414	\$101,500	Condos	0	\$0	\$0	\$0	\$0	
Houses	123	\$298,015	\$305,892	\$254,450	Houses	12	\$476,479	\$406,183	\$408,686	\$408,686	
2 Bedrooms	13	\$222,135	\$234,808	\$169,954	2 Bedrooms	0	\$0	\$330,500	\$240,000	\$240,000	
3 Bedrooms	53	\$257,514	\$267,544	\$220,065	3 Bedrooms	5	\$329,550	\$324,680	\$252,350	\$252,350	
4+ Bedrooms	57	\$352,979	\$353,024	\$313,928	4+ Bedrooms	7	\$581,429	\$533,429	\$621,250	\$621,250	
Area 12746 Granite Bay					<u>Last Year</u>	Area 12201-12208 Lincoln					<u>Last Year</u>
Total Sales:	18			13	Total Sales:	65			71		
Pending Sales	23			21	Pending Sales	88			91		
Total Number of Listings	54			110	Total Number of Listings	92			289		
Median Sales Price	\$561,000			\$450,000	Median Sales Price				\$270,500	\$238,000	
Average Sales Price	\$591,043			\$536,682	Average Sales Price				\$309,486	\$256,053	
	<u>#Sold</u>	<u>Avg. Sales Price</u>	<u>Last Month</u>	<u>Last Year</u>		<u>#Sold</u>	<u>Avg. Sales Price</u>	<u>Last Month</u>	<u>Last Year</u>		
Condos	0	\$0	\$0	\$0	Condos	2	\$155,250	\$102,000	\$102,000	\$99,000	
Houses	18	\$591,043	\$702,065	\$536,682	Houses	65	\$309,486	\$310,255	\$256,053	\$256,053	
2 Bedrooms	0	\$0	\$0	\$0	2 Bedrooms	16	\$321,044	\$354,958	\$296,107	\$296,107	
3 Bedrooms	3	\$453,350	\$548,572	\$350,000	3 Bedrooms	24	\$273,392	\$258,700	\$222,963	\$222,963	
4+ Bedrooms	15	\$618,582	\$753,229	\$570,624	4+ Bedrooms	25	\$336,740	\$321,237	\$268,664	\$268,664	
Area 12301, 12306, 12307, 12658, Auburn, Newcastle					<u>Last Year</u>	Area 12302, 12303, 12305 MV, GV, CX, AG, Wei, BC					<u>Last Year</u>
Total Sales:	39			24	Total Sales:	20			16		
Pending Sales	44			23	Pending Sales	19			21		
Total Number of Listings	68			188	Total Number of Listings	66			115		
Median Sales Price	\$306,600			\$276,825	Median Sales Price				\$174,000	\$332,450	
Average Sales Price	\$373,808			\$294,330	Average Sales Price				\$234,500	\$319,769	
	<u>#Sold</u>	<u>Avg. Sales Price</u>	<u>Last Month</u>	<u>Last Year</u>		<u>#Sold</u>	<u>Avg. Sales Price</u>	<u>Last Month</u>	<u>Last Year</u>		
Condos	0	\$0	\$55,929	\$62,500	Condos	0	\$0	\$0	\$0	\$0	
Houses	39	\$373,808	\$343,664	\$294,330	Houses	20	\$234,500	\$254,561	\$319,769	\$319,769	
2 Bedrooms	3	\$216,667	\$246,000	\$189,975	2 Bedrooms	6	\$166,333	\$161,905	\$62,000	\$62,000	
3 Bedrooms	25	\$283,941	\$323,613	\$261,375	3 Bedrooms	10	\$281,550	\$308,112	\$327,909	\$327,909	
4+ Bedrooms	11	\$620,909	\$424,982	\$464,596	4+ Bedrooms	4	\$219,125	\$257,800	\$361,825	\$361,825	
Area 12677, 12765 Rocklin					<u>Last Year</u>	Area 12304 Foresthill					<u>Last Year</u>
Total Sales:	46			63	Total Sales:	13			8		
Pending Sales	48			46	Pending Sales	8			10		
Total Number of Listings	54			227	Total Number of Listings	23			50		
Median Sales Price	\$327,450			\$250,200	Median Sales Price				\$182,000	\$247,500	
Average Sales Price	\$353,371			\$277,964	Average Sales Price				\$206,831	\$247,100	
	<u>#Sold</u>	<u>Avg. Sales Price</u>	<u>Last Month</u>	<u>Last Year</u>		<u>#Sold</u>	<u>Avg. Sales Price</u>	<u>Last Month</u>	<u>Last Year</u>		
Condos	1	\$141,000	\$126,950	\$133,400	Condos	0	\$0	\$0	\$0	\$0	
Houses	46	\$353,371	\$332,587	\$277,964	Houses	13	\$206,831	\$196,750	\$247,100	\$247,100	
2 Bedrooms	3	\$273,167	\$268,167	\$252,000	2 Bedrooms	5	\$164,180	\$58,000	\$165,000	\$165,000	
3 Bedrooms	16	\$298,658	\$282,825	\$241,563	3 Bedrooms	8	\$233,488	\$225,167	\$223,960	\$223,960	
4+ Bedrooms	27	\$394,706	\$369,645	\$308,397	4+ Bedrooms	0	\$0	\$165,000	\$346,000	\$346,000	

Placer County Association of REALTORS® (PCAR) Monthly Closed Escrows (2004-2013)

(Placer County Resale Homes)

	<i>Jan</i>	<i>Feb</i>	<i>Mar</i>	<i>Apr</i>	<i>May</i>	<i>June</i>	<i>July</i>	<i>Aug</i>	<i>Sept</i>	<i>Oct</i>	<i>Nov</i>	<i>Dec</i>
2004	235	251	462	513	481	546	519	557	505	460	421	437
2005	313	315	507	492	509	532	486	499	433	367	334	315
2006	245	245	389	309	346	394	331	332	326	303	297	302
2007	211	268	307	291	380	333	319	310	221	266	232	226
2008	200	247	298	351	359	383	419	422	424	366	282	319
2009	253	224	319	337	337	407	424	347	388	419	329	358
2010	301	285	399	379	424	480	399	429	408	339	368	420
2011	315	326	482	422	456	469	446	532	495	452	393	414
2012	332	422	484	450	525	500	498	539	437	454	452	460
2013	337											

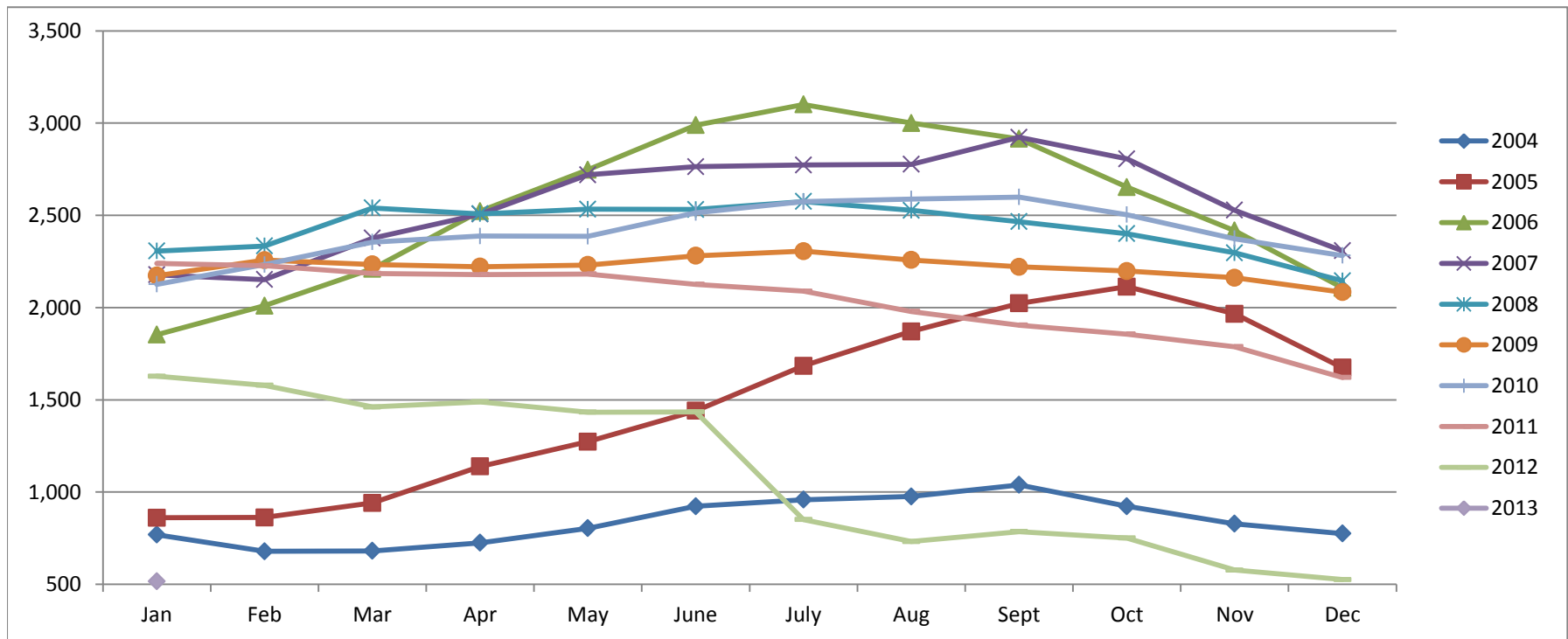


Based on MetroList™ Multiple Listing Service Data. Compiled monthly by PCAR, (916) 624-8271.

Placer County Association of REALTORS® (PCAR) Total Listing Inventory by Month (2004-2013)

(Placer County Resale Homes)

	Jan	Feb	Mar	Apr	May	June	July	Aug	Sept	Oct	Nov	Dec
2004	769	679	681	725	804	923	959	976	1,039	923	828	775
2005	861	862	941	1,139	1,273	1,441	1,684	1,871	2,023	2,113	1,966	1,674
2006	1,853	2,010	2,210	2,523	2,747	2,989	3,101	3,000	2,915	2,653	2,417	2,107
2007	2,178	2,152	2,376	2,507	2,720	2,764	2,773	2,777	2,923	2,806	2,528	2,308
2008	2,307	2,334	2,540	2,508	2,533	2,532	2,575	2,527	2,466	2,401	2,297	2,145
2009	2,173	2,257	2,234	2,222	2,231	2,281	2,306	2,258	2,221	2,198	2,162	2,084
2010	2,126	2,233	2,355	2,388	2,386	2,514	2,574	2,589	2,599	2,504	2,373	2,282
2011	2,239	2,227	2,185	2,179	2,182	2,126	2,089	1,979	1,905	1,856	1,788	1,621
2012	1,628	1,579	1,461	1,489	1,433	1,435	851	732	786	751	577	526
2013	516											

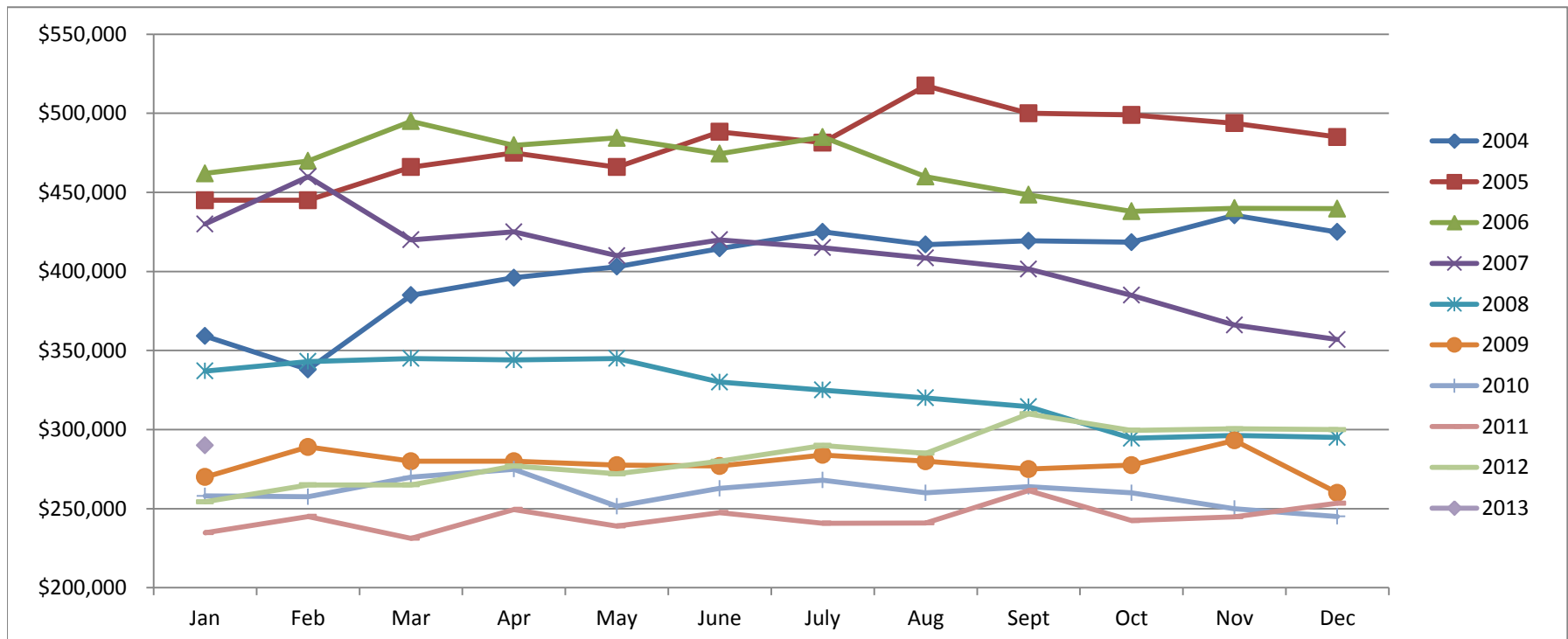


Based on MetroList™ Multiple Listing Service Data. Compiled monthly by PCAR, (916) 624-8271.

Placer County Association of REALTORS® (PCAR) Median Price for Single-Family Detached Homes (2004-2013)

(Placer County Resale Homes)

	Jan	Feb	Mar	Apr	May	June	July	Aug	Sept	Oct	Nov	Dec
2004	\$359,100	\$338,000	\$385,000	\$396,000	\$403,000	\$414,500	\$425,000	\$417,000	\$419,350	\$418,500	\$435,500	\$424,975
2005	\$445,000	\$445,000	\$466,000	\$475,000	\$466,000	\$488,250	\$481,500	\$517,500	\$500,000	\$499,000	\$493,750	\$485,000
2006	\$462,000	\$469,900	\$495,000	\$479,800	\$484,500	\$474,500	\$485,000	\$460,000	\$448,500	\$438,000	\$439,974	\$439,700
2007	\$430,000	\$459,900	\$419,950	\$425,000	\$410,000	\$420,000	\$415,000	\$408,500	\$401,500	\$385,000	\$366,087	\$356,928
2008	\$337,000	\$343,000	\$345,000	\$344,000	\$345,000	\$330,000	\$325,000	\$320,000	\$314,450	\$294,450	\$296,217	\$295,000
2009	\$270,000	\$289,000	\$280,000	\$280,000	\$277,500	\$277,000	\$283,950	\$280,000	\$275,000	\$277,500	\$293,116	\$260,000
2010	\$258,000	\$257,500	\$270,000	\$274,950	\$251,500	\$262,803	\$268,000	\$260,000	\$264,000	\$260,000	\$250,000	\$245,000
2011	\$234,750	\$245,000	\$231,250	\$249,450	\$239,000	\$247,500	\$240,750	\$241,000	\$261,500	\$242,500	\$244,900	\$253,450
2012	\$254,325	\$265,000	\$265,000	\$277,000	\$272,000	\$280,000	\$290,000	\$285,000	\$310,000	\$299,500	\$300,500	\$299,975
2013	\$290,000											

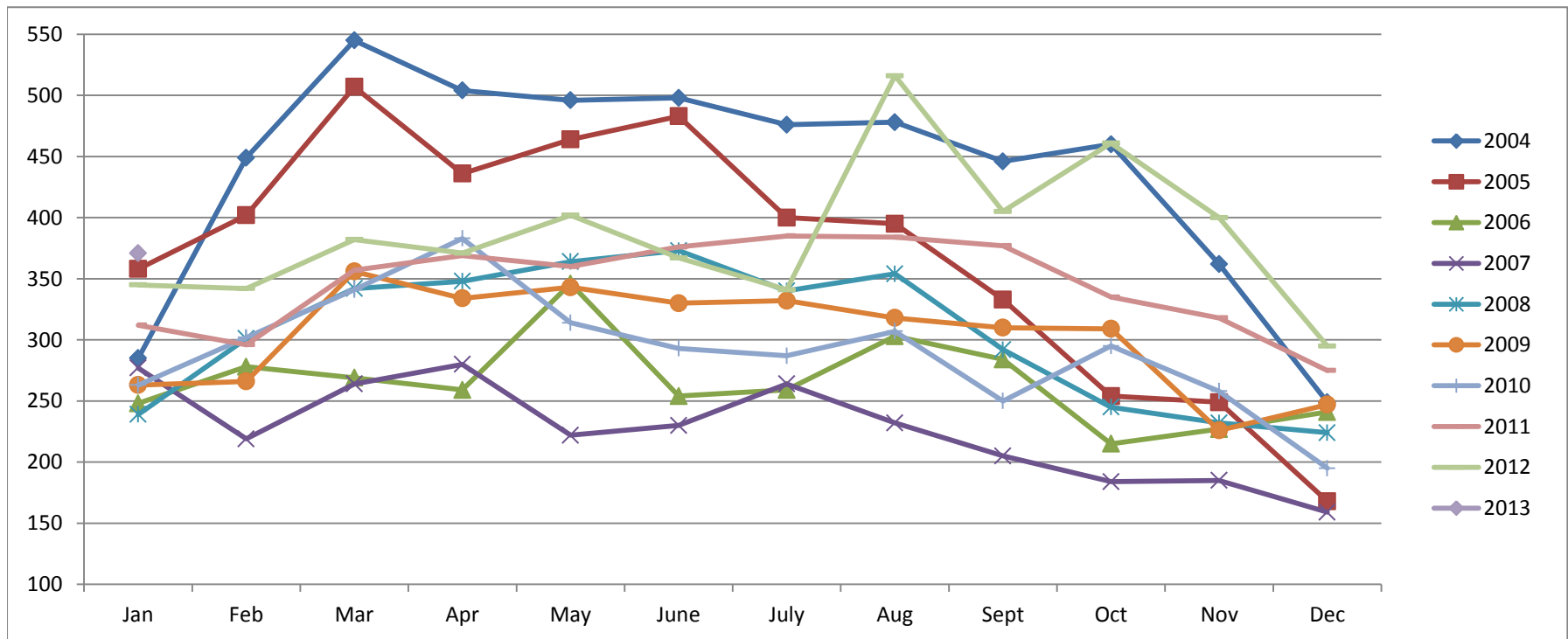


Based on MetroList™ Multiple Listing Service Data. Compiled monthly by PCAR, (916) 624-8271.

Placer County Association of REALTORS® (PCAR) Monthly New Sales Opened (2004-2013)

(Placer County Resale Homes)

	Jan	Feb	Mar	Apr	May	June	July	Aug	Sept	Oct	Nov	Dec
2004	285	449	545	504	496	498	476	478	446	460	362	249
2005	358	402	507	436	464	483	400	395	333	254	249	168
2006	248	278	269	259	346	254	259	303	284	215	227	241
2007	277	219	264	280	222	230	264	232	205	184	185	159
2008	239	301	342	348	364	373	340	354	292	245	232	224
2009	263	266	356	334	343	330	332	318	310	309	226	247
2010	263	302	341	383	314	293	287	307	250	295	258	195
2011	312	296	357	369	360	376	385	384	377	335	318	275
2012	345	342	382	371	402	367	341	516	405	461	400	295
2013	371											



Based on MetroList™ Multiple Listing Service Data. Compiled monthly by PCAR, (916) 624-8271.