

MLS Statistics

JANUARY 2012 - Placer County

RESIDENTIAL ONLY (Single Family Homes)

Preliminary Report

	Current Month	Last Month	% Change	Last Year	% Change
New Listings Published	507	422	20.1%	646	-21.5%
Listing Inventory	1,628	1,621	0.4%	2,239	-27.3%
Number of New Escrows	345	275	25.5%	312	10.6%
Number of Closed Escrows	332	414	-19.8%	315	5.4%
Median (1)	\$254,325	\$253,450	0.3%	\$234,750	8.3%
Mean (2)	\$282,664	\$300,240	-5.9%	\$303,365	-6.8%
Mode (3)	\$200,000 to \$249,999	\$200,000 to \$249,999	NA	\$200,000 to \$249,999	NA

YEAR-TO-DATE STATISTICS

	01/01/12 to 01/31/12	01/01/11 to 12/31/11	01/01/11 to 01/31/11	% Change
New Listings Published	507	6,150	646	-21.5%
Number of New Escrows Opened	345	4,144	312	10.6%
Number of Closed Escrows	332	5,202	315	5.4%
Dollar Volume of Closed Escrows	\$93,844,306	\$1,579,846,920	\$95,559,852	-1.8%
Median	\$254,325	\$260,000	\$234,750	8.3%
Mean	\$282,664	\$300,240	\$303,365	-6.8%

PRICE BRACKET OF SALES BASED ON FINAL SALES

Selling Price	Singlefamily Residential	Percent of Total	Condos	Resid. Income	Resid. Lots/Land
UNDER \$69,999	5	1.5%	4	0	2
\$70,000-\$79,999	1	0.3%	4	0	1
\$80,000-\$89,999	2	0.6%	0	0	0
\$90,000-\$99,999	2	0.6%	2	0	0
\$100,000-\$119,999	6	1.8%	2	0	0
\$120,000-\$139,999	17	5.1%	2	0	0
\$140,000-\$159,999	12	3.6%	1	0	0
\$160,000-\$179,999	19	5.7%	0	1	1
\$180,000-\$199,999	22	6.6%	1	0	0
\$200,000-\$249,999	68	20.5%	0	0	0
\$250,000-\$299,999	67	20.2%	0	0	0
\$300,000-\$349,999	36	10.8%	0	0	0
\$350,000-\$399,999	27	8.1%	0	0	0
\$400,000-\$449,999	15	4.5%	0	0	0
\$450,000-\$499,999	13	3.9%	0	0	0
\$500,000-\$749,999	15	4.5%	0	0	0
\$750,000-\$999,999	3	0.9%	0	0	0
OVER \$1,000,000	2	0.6%	0	0	0
TOTAL	332		16	1	4

Selling Prices of Classes Listed Above

\$89,999 or less	5.4%
\$90,000-\$139,999	8.8%
\$140,000-\$179,999	9.6%
\$180,000-\$299,999	44.8%
\$300,000-\$399,999	17.8%
\$400,000-\$749,999	12.2%
\$750,000 and over	1.4%



TYPE OF FINANCING OF UNITS SOLD

Financing	# of Units
Cash	87
Conventional	140
FHA	75
VA	30
Other	0

LENGTH OF TIME ON MARKET

Days on Market	# of units	% of total
1-30 Days	131	37.0%
31-60 Days	57	16.1%
61-90 Days	38	10.7%
91-120 Days	47	13.3%
121+Days	81	22.9%

This representation is based in whole or part on data supplied by MetroList. MetroList does not guarantee nor is it in any way responsible for its accuracy. Data maintained by MetroList may not reflect all real estate activity in the market. All information provided is deemed reliable but is not guaranteed and should be independently verified.

1. Median: The midpoint at which an equal number of homes sold above and below this value.
2. Mean: The arithmetic average of the total number of residential sales divided into total residential sales dollar volume.
3. Mode: The price range within which the most number of homes were sold.



Home Sales Report JANUARY 2012

Number of New Listing:	507	Total Sales Reported Last Month:	414
Number of New Listings Last Month:	422	Sales Volume:	\$93,844,306
Total Sales Reported:	332	Average Sales Price:	\$282,664

These figures are based on MetroList Multiple Listing Service Data. Compiled monthly by PCAR, (916) 624-8271

ALL AREAS		# Sold	Avg. Sale Price	Last Month	Last Year	
Total Sales	332	Condos	16	\$97,575	\$110,066	\$115,465
Pending Sales	345	Houses	332	\$282,664	\$300,240	\$303,365
Total Number of Listings	1,628	2 Bedrooms	39	\$223,224	\$224,788	\$201,867
Median Sales Price	\$254,325	3 Bedrooms	149	\$238,968	\$247,991	\$241,959
Average Sales Price	\$282,664	4+ Bedrooms	144	\$343,974	\$382,926	\$391,003

Breakdown By Areas

Area 12747, 12661, 12668, 12678 Roseville					Area 12650, 12663 Loomis, Penryn				
				Last Year					Last Year
Total Sales:	123			137	Total Sales:	14			10
Pending Sales	122			96	Pending Sales	11			12
Total Number of Listings	571			721	Total Number of Listings	64			86
Median Sales Price	\$248,000			\$237,000	Median Sales Price	\$360,000			\$453,500
Average Sales Price	\$254,450			\$285,699	Average Sales Price	\$408,686			\$507,790
	<u>#Sold</u>	<u>Avg. Sales Price</u>	<u>Last Month</u>			<u>#Sold</u>	<u>Avg. Sales Price</u>	<u>Last Month</u>	<u>Last Year</u>
Condos	8	\$101,500	\$110,754	\$122,200	Condos	0	\$0	\$0	\$0
Houses	123	\$254,450	\$258,553	\$289,455	Houses	14	\$408,686	\$457,518	\$507,790
2 Bedrooms	13	\$169,954	\$217,746	\$175,435	2 Bedrooms	2	\$240,000	\$300,000	\$163,000
3 Bedrooms	58	\$220,065	\$228,982	\$251,348	3 Bedrooms	6	\$252,350	\$265,667	\$412,725
4+ Bedrooms	52	\$313,928	\$316,088	\$356,560	4+ Bedrooms	6	\$621,250	\$562,243	\$652,800

Area 12746 Granite Bay					Area 12201-12208 Lincoln				
				Last Year					Last Year
Total Sales:	13			17	Total Sales:	71			67
Pending Sales	21			18	Pending Sales	91			67
Total Number of Listings	110			129	Total Number of Listings	289			535
Median Sales Price	\$450,000			\$460,000	Median Sales Price	\$238,000			\$219,000
Average Sales Price	\$536,682			\$489,891	Average Sales Price	\$256,053			\$287,038
	<u>#Sold</u>	<u>Avg. Sales Price</u>	<u>Last Month</u>	<u>Last Year</u>		<u>#Sold</u>	<u>Avg. Sales Price</u>	<u>Last Month</u>	<u>Last Year</u>
Condos	0	\$0	\$0	\$0	Condos	1	\$99,000	\$128,500	\$0
Houses	13	\$536,682	\$590,872	\$489,891	Houses	71	\$256,053	\$274,674	\$287,038
2 Bedrooms	0	\$0	\$0	\$0	2 Bedrooms	14	\$296,107	\$307,553	\$299,313
3 Bedrooms	2	\$350,000	\$462,611	\$293,450	3 Bedrooms	28	\$222,963	\$207,975	\$202,588
4+ Bedrooms	11	\$570,624	\$645,840	\$627,400	4+ Bedrooms	29	\$268,664	\$316,188	\$350,598

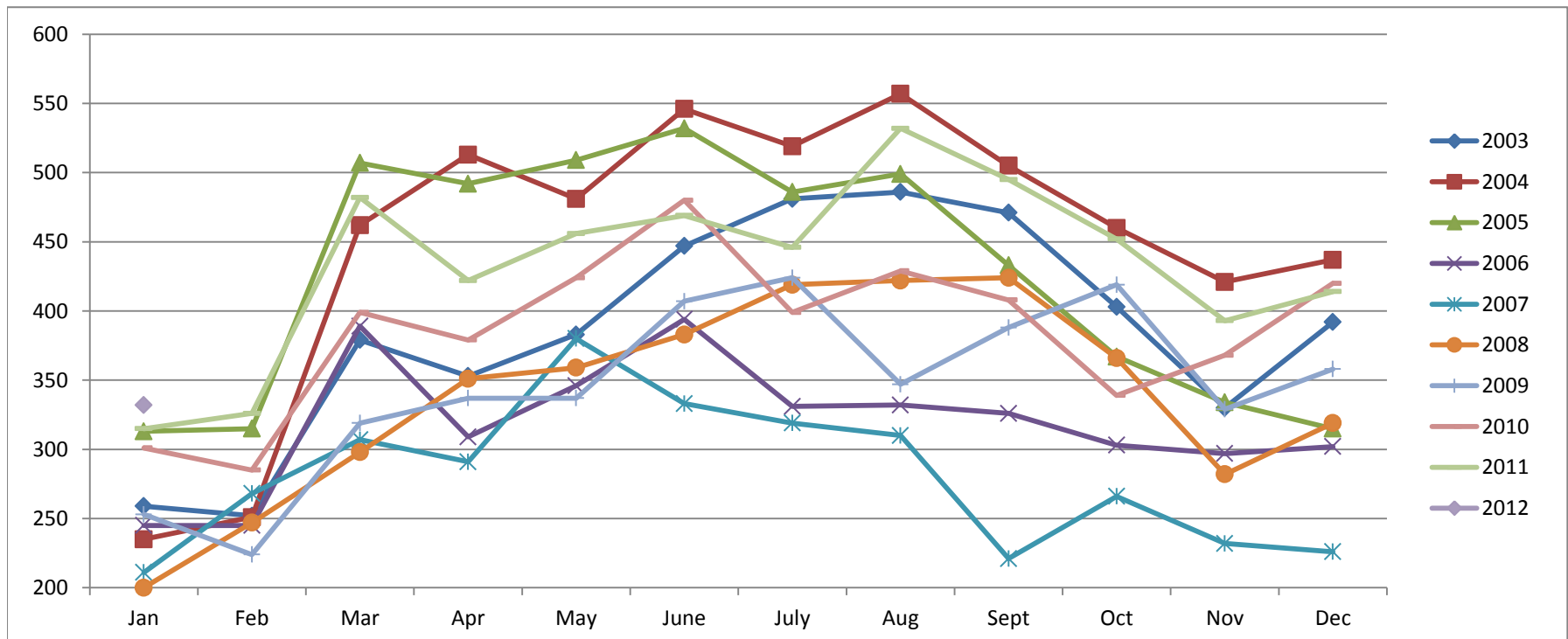
Area 12301, 12306, 12307, 12658, Auburn, Newcastle					Area 12302, 12303, 12305 MV, GV, CX, AG, Wei, BC				
				Last Year					Last Year
Total Sales:	24			24	Total Sales:	16			16
Pending Sales	23			23	Pending Sales	21			13
Total Number of Listings	188			221	Total Number of Listings	115			133
Median Sales Price	\$276,825			\$176,000	Median Sales Price	\$332,450			\$180,000
Average Sales Price	\$294,330			\$289,492	Average Sales Price	\$319,769			\$253,903
	<u>#Sold</u>	<u>Avg. Sales Price</u>	<u>Last Month</u>	<u>Last Year</u>		<u>#Sold</u>	<u>Avg. Sales Price</u>	<u>Last Month</u>	<u>Last Year</u>
Condos	4	\$62,500	\$99,271	\$58,250	Condos	0	\$0	\$84,500	\$0
Houses	24	\$294,330	\$330,382	\$289,492	Houses	16	\$319,769	\$271,247	\$253,903
2 Bedrooms	6	\$189,975	\$144,833	\$178,686	2 Bedrooms	1	\$62,000	\$138,356	\$128,000
3 Bedrooms	12	\$261,375	\$315,339	\$254,150	3 Bedrooms	11	\$327,909	\$247,829	\$172,095
4+ Bedrooms	6	\$464,596	\$454,840	\$450,786	4+ Bedrooms	4	\$361,825	\$779,208	\$652,500

Area 12677, 12765 Rocklin					Area 12304 Foresthill				
				Last Year					Last Year
Total Sales:	63			41	Total Sales:	8			5
Pending Sales	46			49	Pending Sales	10			3
Total Number of Listings	227			350	Total Number of Listings	50			51
Median Sales Price	\$250,200			\$262,000	Median Sales Price	\$247,500			\$199,400
Average Sales Price	\$277,964			\$290,080	Average Sales Price	\$247,100			\$198,680
	<u>#Sold</u>	<u>Avg. Sales Price</u>	<u>Last Month</u>	<u>Last Year</u>		<u>#Sold</u>	<u>Avg. Sales Price</u>	<u>Last Month</u>	<u>Last Year</u>
Condos	3	\$133,400	\$107,944	\$171,663	Condos	0	\$0	\$0	\$0
Houses	63	\$277,964	\$284,831	\$290,080	Houses	8	\$247,100	\$213,783	\$198,680
2 Bedrooms	2	\$252,000	\$223,983	\$207,250	2 Bedrooms	1	\$165,000	\$87,750	\$184,500
3 Bedrooms	27	\$241,563	\$250,848	\$239,000	3 Bedrooms	5	\$223,960	\$213,714	\$230,000
4+ Bedrooms	34	\$308,397	\$315,652	\$335,578	4+ Bedrooms	2	\$346,000	\$297,967	\$197,200

Placer County Association of REALTORS® (PCAR) Monthly Closed Escrows (2003-2012)

(Placer County Resale Homes)

	Jan	Feb	Mar	Apr	May	June	July	Aug	Sept	Oct	Nov	Dec
2003	259	252	379	353	383	447	481	486	471	403	330	392
2004	235	251	462	513	481	546	519	557	505	460	421	437
2005	313	315	507	492	509	532	486	499	433	367	334	315
2006	245	245	389	309	346	394	331	332	326	303	297	302
2007	211	268	307	291	380	333	319	310	221	266	232	226
2008	200	247	298	351	359	383	419	422	424	366	282	319
2009	253	224	319	337	337	407	424	347	388	419	329	358
2010	301	285	399	379	424	480	399	429	408	339	368	420
2011	315	326	482	422	456	469	446	532	495	452	393	414
2012	332											

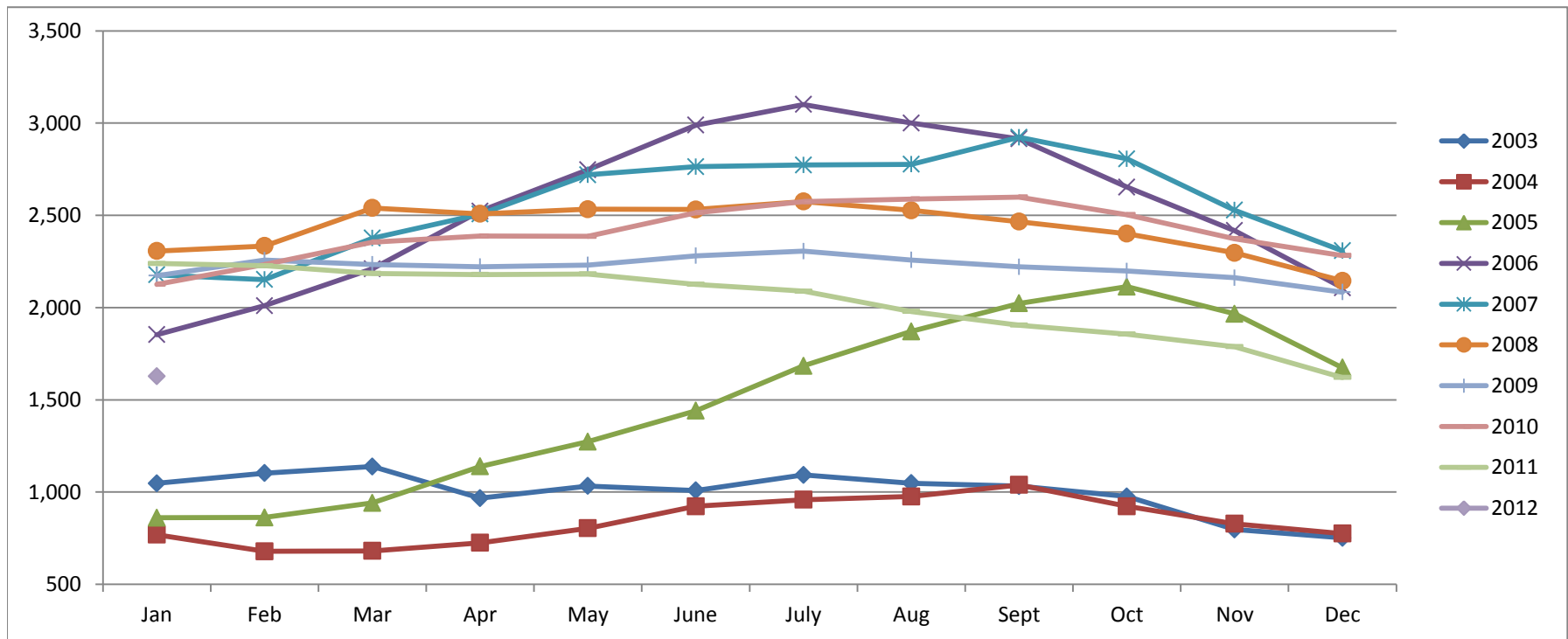


Based on MetroList™ Multiple Listing Service Data. Compiled monthly by PCAR, (916) 624-8271.

Placer County Association of REALTORS® (PCAR) Total Listing Inventory by Month (2003-2012)

(Placer County Resale Homes)

	Jan	Feb	Mar	Apr	May	June	July	Aug	Sept	Oct	Nov	Dec
2003	1,047	1,103	1,138	967	1,033	1,009	1,093	1,048	1,032	976	797	752
2004	769	679	681	725	804	923	959	976	1,039	923	828	775
2005	861	862	941	1,139	1,273	1,441	1,684	1,871	2,023	2,113	1,966	1,674
2006	1,853	2,010	2,210	2,523	2,747	2,989	3,101	3,000	2,915	2,653	2,417	2,107
2007	2,178	2,152	2,376	2,507	2,720	2,764	2,773	2,777	2,923	2,806	2,528	2,308
2008	2,307	2,334	2,540	2,508	2,533	2,532	2,575	2,527	2,466	2,401	2,297	2,145
2009	2,173	2,257	2,234	2,222	2,231	2,281	2,306	2,258	2,221	2,198	2,162	2,084
2010	2,126	2,233	2,355	2,388	2,386	2,514	2,574	2,589	2,599	2,504	2,373	2,282
2011	2,239	2,227	2,185	2,179	2,182	2,126	2,089	1,979	1,905	1,856	1,788	1,621
2012	1,628											

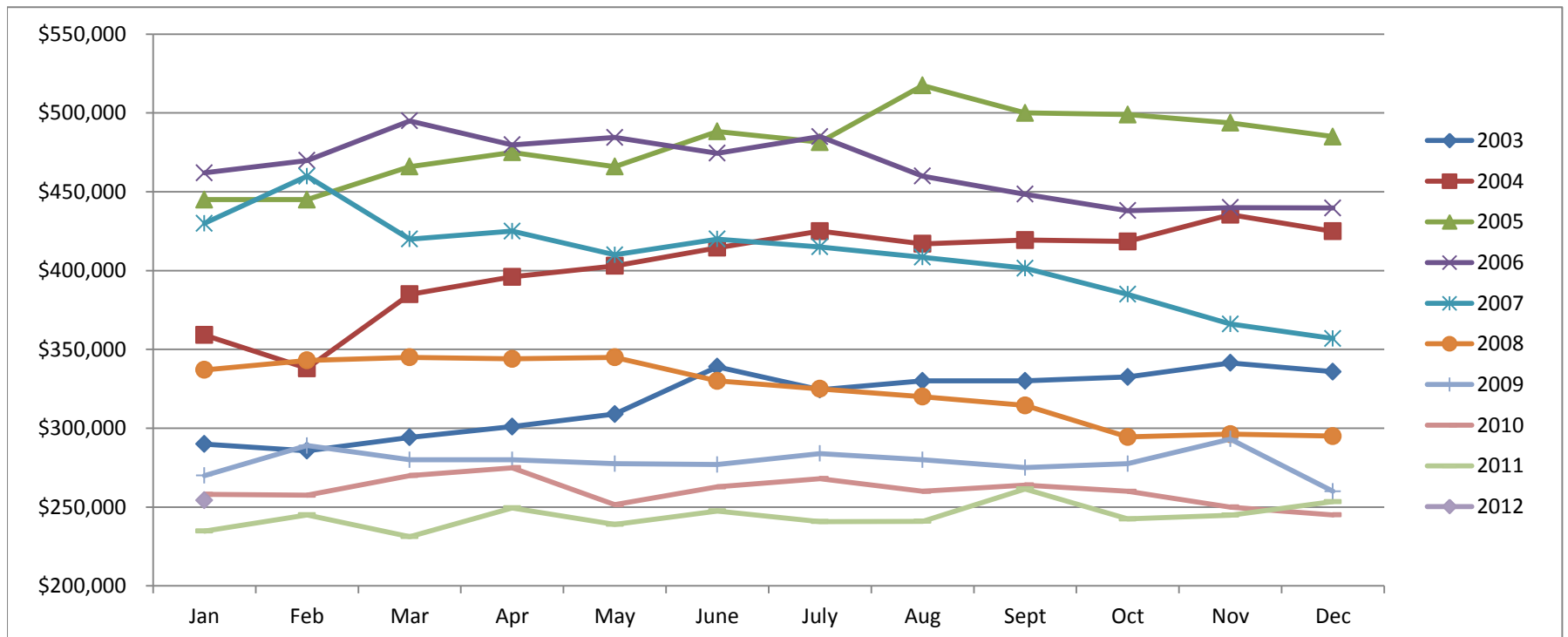


Based on MetroList™ Multiple Listing Service Data. Compiled monthly by PCAR, (916) 624-8271.

Placer County Association of REALTORS® (PCAR) Median Price for Single-Family Detached Homes (2003-2012)

(Placer County Resale Homes)

	Jan	Feb	Mar	Apr	May	June	July	Aug	Sept	Oct	Nov	Dec
2003	\$290,000	\$285,750	\$294,250	\$301,000	\$309,000	\$339,000	\$324,500	\$330,000	\$330,000	\$332,500	\$341,410	\$335,900
2004	\$359,100	\$338,000	\$385,000	\$396,000	\$403,000	\$414,500	\$425,000	\$417,000	\$419,350	\$418,500	\$435,500	\$424,975
2005	\$445,000	\$445,000	\$466,000	\$475,000	\$466,000	\$488,250	\$481,500	\$517,500	\$500,000	\$499,000	\$493,750	\$485,000
2006	\$462,000	\$469,900	\$495,000	\$479,800	\$484,500	\$474,500	\$485,000	\$460,000	\$448,500	\$438,000	\$439,974	\$439,700
2007	\$430,000	\$459,900	\$419,950	\$425,000	\$410,000	\$420,000	\$415,000	\$408,500	\$401,500	\$385,000	\$366,087	\$356,928
2008	\$337,000	\$343,000	\$345,000	\$344,000	\$345,000	\$330,000	\$325,000	\$320,000	\$314,450	\$294,450	\$296,217	\$295,000
2009	\$270,000	\$289,000	\$280,000	\$280,000	\$277,500	\$277,000	\$283,950	\$280,000	\$275,000	\$277,500	\$293,116	\$260,000
2010	\$258,000	\$257,500	\$270,000	\$274,950	\$251,500	\$262,803	\$268,000	\$260,000	\$264,000	\$260,000	\$250,000	\$245,000
2011	\$234,750	\$245,000	\$231,250	\$249,450	\$239,000	\$247,500	\$240,750	\$241,000	\$261,500	\$242,500	\$244,900	\$253,450
2012	\$254,325											

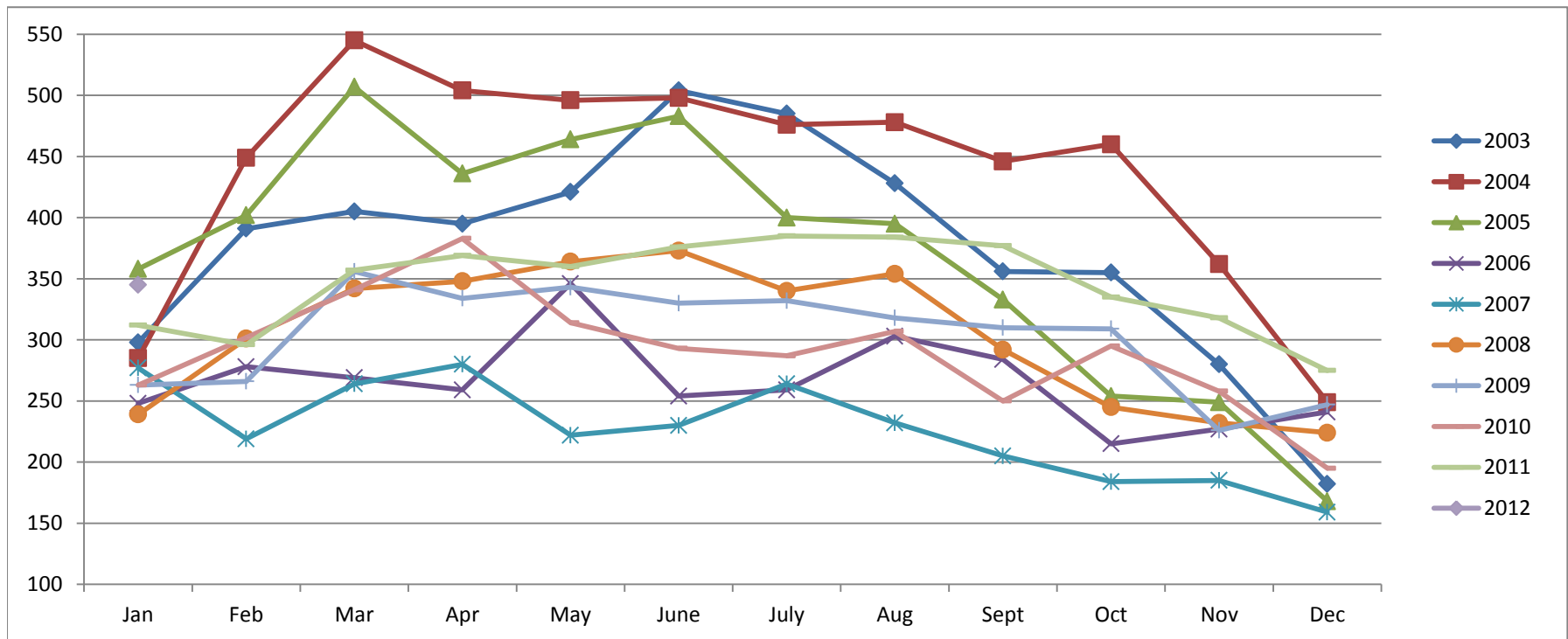


Based on MetroList™ Multiple Listing Service Data. Compiled monthly by PCAR, (916) 624-8271.

Placer County Association of REALTORS® (PCAR) Monthly New Sales Opened (2003-2012)

(Placer County Resale Homes)

	Jan	Feb	Mar	Apr	May	June	July	Aug	Sept	Oct	Nov	Dec
2003	298	391	405	395	421	504	485	428	356	355	280	182
2004	285	449	545	504	496	498	476	478	446	460	362	249
2005	358	402	507	436	464	483	400	395	333	254	249	168
2006	248	278	269	259	346	254	259	303	284	215	227	241
2007	277	219	264	280	222	230	264	232	205	184	185	159
2008	239	301	342	348	364	373	340	354	292	245	232	224
2009	263	266	356	334	343	330	332	318	310	309	226	247
2010	263	302	341	383	314	293	287	307	250	295	258	195
2011	312	296	357	369	360	376	385	384	377	335	318	275
2012	345											



Based on MetroList™ Multiple Listing Service Data. Compiled monthly by PCAR, (916) 624-8271.