

# MLS Statistics

February 2014 - Placer County

## RESIDENTIAL ONLY (Single Family Homes)

Preliminary Report

	Current Month	Last Month	% Change	Last Year	% Change
New Listings Published	555	574	-3.3%	477	16.4%
Listing Inventory	885	834	6.1%	538	64.5%
Number of New Escrows	335	304	10.2%	282	18.8%
Number of Closed Escrows	314	286	9.8%	364	-13.7%
Median (1)	\$368,500	\$352,500	4.5%	\$314,500	17.2%
Mean (2)	\$402,809	\$391,966	2.8%	\$362,648	11.1%
Mode (3)	\$300,000 to \$349,999	\$250,000 to \$299,999	NA	\$250,000 to \$299,999	NA

## YEAR-TO-DATE STATISTICS

	01/01/14 to 02/28/14	01/01/14 to 01/31/14	01/01/13 to 02/28/13	% Change
New Listings Published	1,129	574	859	31.4%
Number of New Escrows Opened	639	304	653	-2.1%
Number of Closed Escrows	604	286	707	-14.6%
Dollar Volume of Closed Escrows	\$240,008,795	\$112,102,208	\$245,288,806	-2.2%
Median	\$361,750	\$352,500	\$300,000	20.6%
Mean	\$397,366	\$391,966	\$346,943	14.5%

## PRICE BRACKET OF SALES BASED ON FINAL SALES

Selling Price	Singlefamily Residential	Percent of Total	Condos	Resid. Income	Resid. Lots/Land
UNDER \$69,999	0	0.0%	0	0	2
\$70,000-\$79,999	1	0.3%	0	0	0
\$80,000-\$89,999	0	0.0%	0	0	0
\$90,000-\$99,999	0	0.0%	0	0	1
\$100,000-\$119,999	0	0.0%	3	0	4
\$120,000-\$139,999	0	0.0%	3	0	0
\$140,000-\$159,999	2	0.6%	0	0	1
\$160,000-\$179,999	3	1.0%	3	0	2
\$180,000-\$199,999	6	1.9%	5	1	0
\$200,000-\$249,999	23	7.3%	1	0	3
\$250,000-\$299,999	42	13.4%	4	1	1
\$300,000-\$349,999	62	19.7%	0	0	0
\$350,000-\$399,999	52	16.6%	0	0	0
\$400,000-\$449,999	34	10.8%	0	1	0
\$450,000-\$499,999	28	8.9%	0	0	2
\$500,000-\$749,999	49	15.6%	0	0	0
\$750,000-\$999,999	8	2.5%	0	0	0
OVER \$1,000,000	4	1.3%	0	0	0
<b>TOTAL</b>	<b>314</b>		<b>19</b>	<b>3</b>	<b>16</b>

### Selling Prices of Classes Listed Above

\$89,999 or less	0.9%
\$90,000-\$139,999	3.1%
\$140,000-\$179,999	3.1%
\$180,000-\$299,999	24.7%
\$300,000-\$399,999	32.4%
\$400,000-\$749,999	32.4%
\$750,000 and over	3.4%



## TYPE OF FINANCING OF UNITS SOLD

Financing	# of Units
Cash	66
Conventional	195
FHA	37
VA	16
Other	20

## LENGTH OF TIME ON MARKET

Days on Market	# of units	% of total
1-30 Days	193	57.8%
31-60 Days	52	15.6%
61-90 Days	43	12.9%
91-120 Days	23	6.9%
121+Days	23	6.9%

This representation is based in whole or part on data supplied by MetroList. MetroList does not guarantee nor is it in any way responsible for its accuracy. Data maintained by MetroList may not reflect all real estate activity in the market. All information provided is deemed reliable but is not guaranteed and should be independently verified.

1. Median: The midpoint at which an equal number of homes sold above and below this value.
2. Mean: The arithmetic average of the total number of residential sales divided into total residential sales dollar volume.
3. Mode: The price range within which the most number of homes were sold.



# Home Sales Report - February 2014

Number of New Listing: 555 Total Sales Reported Last Month: 286  
 Number of New Listings Last Month: 574 Sales Volume: \$126,482,087  
 Total Sales Reported: 314 Average Sales Price: \$402,809

*These figures are based on MetroList Multiple Listing Service Data. Compiled monthly by PCAR, (916) 624-8271*

ALL AREAS		# Sold	Avg. Sale Price	Last Month	Last Year	
Total Sales	314	Condos	19	\$179,368	\$162,790	\$127,390
Pending Sales	335	Houses	314	\$402,809	\$391,966	\$362,648
Total Number of Listings	885	2 Bedrooms	41	\$331,104	\$293,474	\$276,003
Median Sales Price	\$368,500	3 Bedrooms	126	\$320,221	\$324,783	\$297,011
Average Sales Price	\$402,809	4+ Bedrooms	147	\$493,598	\$492,029	\$456,628

## Breakdown By Areas

Area 12747, 12661, 12668, 12678 Roseville				Last Year	Area 12650, 12663 Loomis, Penryn				Last Year
Total Sales:	116			129	Total Sales:	12			10
Pending Sales	118			117	Pending Sales	14			11
Total Number of Listings	249			138	Total Number of Listings	42			43
Median Sales Price	\$365,000		\$315,000		Median Sales Price	\$482,500		\$454,600	
Average Sales Price	\$375,175		\$335,454		Average Sales Price	\$559,500		\$785,410	
	<u>#Sold</u>	<u>Avg. Sales Price</u>	<u>Last Month</u>	<u>Last Year</u>		<u>#Sold</u>	<u>Avg. Sales Price</u>	<u>Last Month</u>	<u>Last Year</u>
Condos	7	\$131,571	\$170,540	\$123,885	Condos	0	\$0	\$0	\$0
Houses	116	\$375,175	\$377,235	\$335,454	Houses	12	\$559,500	\$558,613	\$785,410
2 Bedrooms	13	\$286,100	\$246,488	\$213,375	2 Bedrooms	1	\$440,000	\$0	\$0
3 Bedrooms	50	\$328,297	\$316,989	\$287,935	3 Bedrooms	6	\$390,667	\$535,180	\$467,517
4+ Bedrooms	53	\$441,248	\$462,385	\$396,531	4+ Bedrooms	5	\$786,000	\$597,667	\$1,262,250

Area 12746 Granite Bay				Last Year	Area 12201-12208 Lincoln				Last Year
Total Sales:	22			26	Total Sales:	61			80
Pending Sales	21			18	Pending Sales	84			49
Total Number of Listings	112			61	Total Number of Listings	145			80
Median Sales Price	\$556,000		\$734,750		Median Sales Price	\$343,000		\$271,245	
Average Sales Price	\$621,611		\$689,766		Average Sales Price	\$347,184		\$302,790	
	<u>#Sold</u>	<u>Avg. Sales Price</u>	<u>Last Month</u>	<u>Last Year</u>		<u>#Sold</u>	<u>Avg. Sales Price</u>	<u>Last Month</u>	<u>Last Year</u>
Condos	0	\$0	\$0	\$0	Condos	2	\$188,000	\$198,000	\$143,900
Houses	22	\$621,611	\$659,300	\$689,766	Houses	61	\$347,184	\$325,284	\$302,790
2 Bedrooms	1	\$499,000	\$0	\$145,000	2 Bedrooms	17	\$387,553	\$382,177	\$330,953
3 Bedrooms	2	\$337,450	\$450,000	\$472,929	3 Bedrooms	26	\$298,027	\$269,358	\$273,733
4+ Bedrooms	19	\$657,976	\$674,250	\$804,357	4+ Bedrooms	18	\$380,063	\$393,077	\$327,063

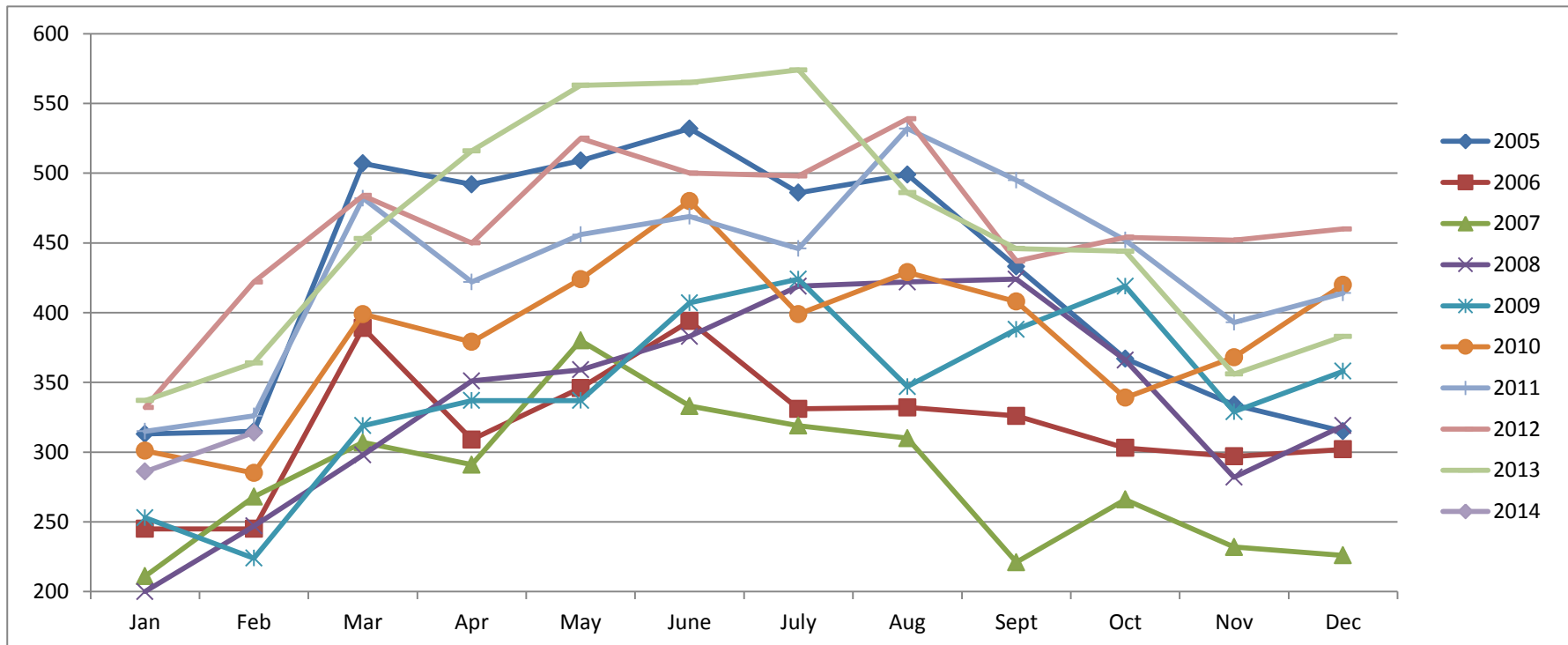
Area 12301, 12306, 12307, 12658, Auburn, Newcastle				Last Year	Area 12302, 12303, 12305 MV, GV, CX, AG, Wei, BC				Last Year
Total Sales:	22			39	Total Sales:	13			20
Pending Sales	26			29	Pending Sales	19			18
Total Number of Listings	118			78	Total Number of Listings	80			66
Median Sales Price	\$340,000		\$273,000		Median Sales Price	\$275,000		\$287,500	
Average Sales Price	\$412,575		\$307,923		Average Sales Price	\$307,335		\$310,833	
	<u>#Sold</u>	<u>Avg. Sales Price</u>	<u>Last Month</u>	<u>Last Year</u>		<u>#Sold</u>	<u>Avg. Sales Price</u>	<u>Last Month</u>	<u>Last Year</u>
Condos	0	\$0	\$115,229	\$88,283	Condos	0	\$0	\$0	\$0
Houses	22	\$412,575	\$414,224	\$307,923	Houses	13	\$307,335	\$338,450	\$310,833
2 Bedrooms	2	\$226,875	\$294,600	\$246,000	2 Bedrooms	3	\$161,933	\$189,825	\$136,200
3 Bedrooms	14	\$319,000	\$361,294	\$263,850	3 Bedrooms	5	\$298,510	\$357,000	\$333,447
4+ Bedrooms	6	\$692,817	\$537,592	\$393,000	4+ Bedrooms	5	\$403,400	\$493,333	\$417,625

Area 12677, 12765 Rocklin				Last Year	Area 12304 Foresthill				Last Year
Total Sales:	61			52	Total Sales:	6			8
Pending Sales	45			31	Pending Sales	6			9
Total Number of Listings	111			48	Total Number of Listings	27			21
Median Sales Price	\$390,000		\$346,500		Median Sales Price	\$251,500		\$176,750	
Average Sales Price	\$413,608		\$362,800		Average Sales Price	\$307,000		\$203,488	
	<u>#Sold</u>	<u>Avg. Sales Price</u>	<u>Last Month</u>	<u>Last Year</u>		<u>#Sold</u>	<u>Avg. Sales Price</u>	<u>Last Month</u>	<u>Last Year</u>
Condos	10	\$211,100	\$194,250	\$154,167	Condos	0	\$0	\$0	\$0
Houses	61	\$413,608	\$431,542	\$362,800	Houses	6	\$307,000	\$201,983	\$203,488
2 Bedrooms	3	\$318,000	\$430,260	\$349,000	2 Bedrooms	1	\$435,000	\$147,360	\$0
3 Bedrooms	19	\$331,521	\$336,288	\$306,646	3 Bedrooms	4	\$227,000	\$264,400	\$160,750
4+ Bedrooms	39	\$460,954	\$482,225	\$393,925	4+ Bedrooms	1	\$499,000	\$450,000	\$331,700

# Placer County Association of REALTORS® (PCAR) Monthly Closed Escrows (2005-2014)

(Placer County Resale Homes)

	Jan	Feb	Mar	Apr	May	June	July	Aug	Sept	Oct	Nov	Dec
<b>2005</b>	313	315	507	492	509	532	486	499	433	367	334	315
<b>2006</b>	245	245	389	309	346	394	331	332	326	303	297	302
<b>2007</b>	211	268	307	291	380	333	319	310	221	266	232	226
<b>2008</b>	200	247	298	351	359	383	419	422	424	366	282	319
<b>2009</b>	253	224	319	337	337	407	424	347	388	419	329	358
<b>2010</b>	301	285	399	379	424	480	399	429	408	339	368	420
<b>2011</b>	315	326	482	422	456	469	446	532	495	452	393	414
<b>2012</b>	332	422	484	450	525	500	498	539	437	454	452	460
<b>2013</b>	337	364	453	516	563	565	574	486	446	444	356	383
<b>2014</b>	286	314										

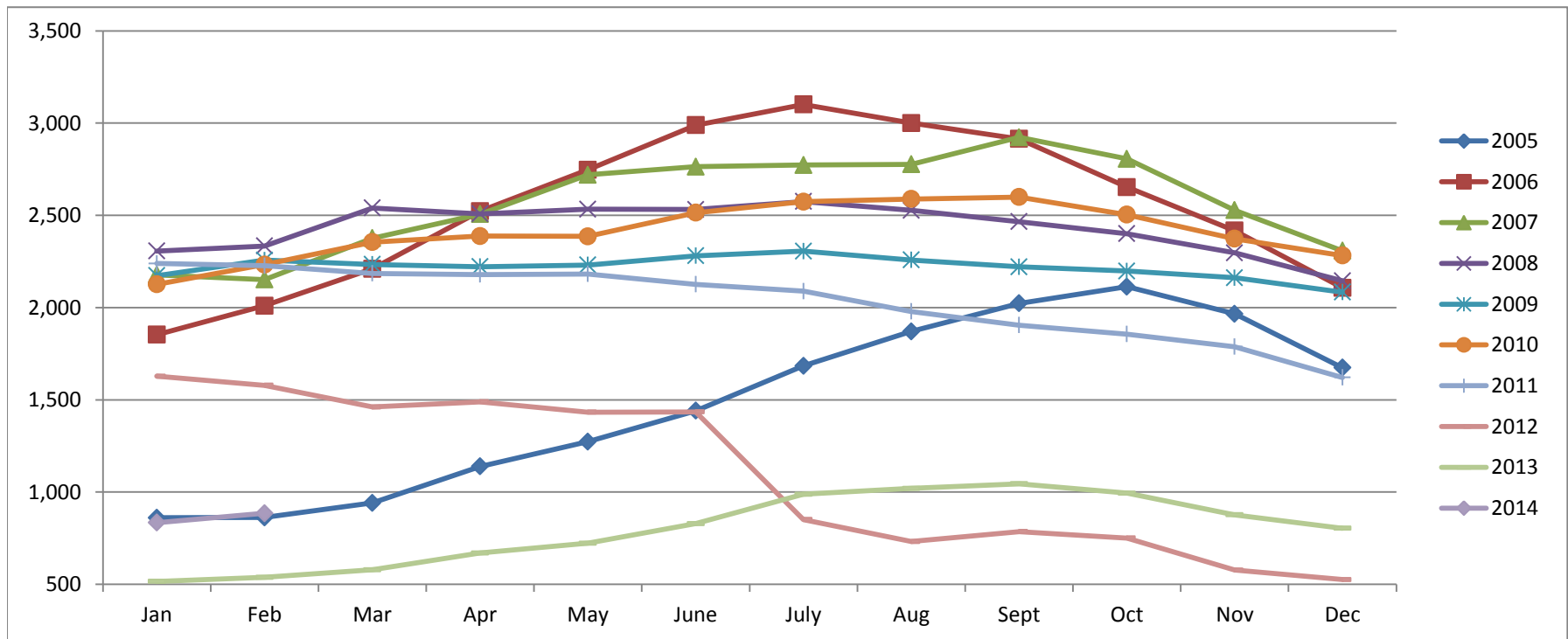


Based on MetroList™ Multiple Listing Service Data. Compiled monthly by PCAR, (916) 624-8271.

# Placer County Association of REALTORS® (PCAR) Total Listing Inventory by Month (2005-2014)

(Placer County Resale Homes)

	Jan	Feb	Mar	Apr	May	June	July	Aug	Sept	Oct	Nov	Dec
<b>2005</b>	861	862	941	1,139	1,273	1,441	1,684	1,871	2,023	2,113	1,966	1,674
<b>2006</b>	1,853	2,010	2,210	2,523	2,747	2,989	3,101	3,000	2,915	2,653	2,417	2,107
<b>2007</b>	2,178	2,152	2,376	2,507	2,720	2,764	2,773	2,777	2,923	2,806	2,528	2,308
<b>2008</b>	2,307	2,334	2,540	2,508	2,533	2,532	2,575	2,527	2,466	2,401	2,297	2,145
<b>2009</b>	2,173	2,257	2,234	2,222	2,231	2,281	2,306	2,258	2,221	2,198	2,162	2,084
<b>2010</b>	2,126	2,233	2,355	2,388	2,386	2,514	2,574	2,589	2,599	2,504	2,373	2,282
<b>2011</b>	2,239	2,227	2,185	2,179	2,182	2,126	2,089	1,979	1,905	1,856	1,788	1,621
<b>2012</b>	1,628	1,579	1,461	1,489	1,433	1,435	851	732	786	751	577	526
<b>2013</b>	516	538	579	670	723	829	988	1,020	1,045	994	877	804
<b>2014</b>	834	885										

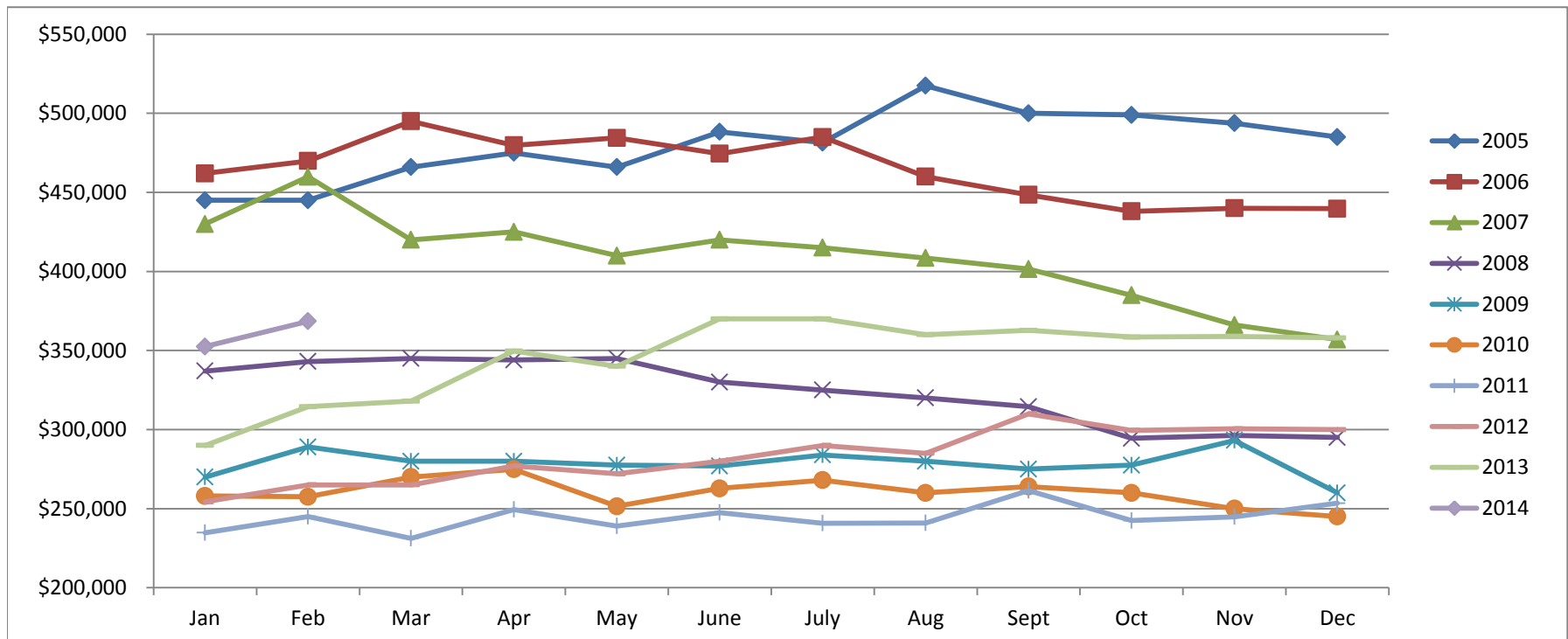


Based on MetroList™ Multiple Listing Service Data. Compiled monthly by PCAR, (916) 624-8271.

# Placer County Association of REALTORS® (PCAR) Median Price for Single-Family Detached Homes (2005-2014)

(Placer County Resale Homes)

	Jan	Feb	Mar	Apr	May	June	July	Aug	Sept	Oct	Nov	Dec
<b>2005</b>	\$445,000	\$445,000	\$466,000	\$475,000	\$466,000	\$488,250	\$481,500	\$517,500	\$500,000	\$499,000	\$493,750	\$485,000
<b>2006</b>	\$462,000	\$469,900	\$495,000	\$479,800	\$484,500	\$474,500	\$485,000	\$460,000	\$448,500	\$438,000	\$439,974	\$439,700
<b>2007</b>	\$430,000	\$459,900	\$419,950	\$425,000	\$410,000	\$420,000	\$415,000	\$408,500	\$401,500	\$385,000	\$366,087	\$356,928
<b>2008</b>	\$337,000	\$343,000	\$345,000	\$344,000	\$345,000	\$330,000	\$325,000	\$320,000	\$314,450	\$294,450	\$296,217	\$295,000
<b>2009</b>	\$270,000	\$289,000	\$280,000	\$280,000	\$277,500	\$277,000	\$283,950	\$280,000	\$275,000	\$277,500	\$293,116	\$260,000
<b>2010</b>	\$258,000	\$257,500	\$270,000	\$274,950	\$251,500	\$262,803	\$268,000	\$260,000	\$264,000	\$260,000	\$250,000	\$245,000
<b>2011</b>	\$234,750	\$245,000	\$231,250	\$249,450	\$239,000	\$247,500	\$240,750	\$241,000	\$261,500	\$242,500	\$244,900	\$253,450
<b>2012</b>	\$254,325	\$265,000	\$265,000	\$277,000	\$272,000	\$280,000	\$290,000	\$285,000	\$310,000	\$299,500	\$300,500	\$299,975
<b>2013</b>	\$290,000	\$314,500	\$318,000	\$349,700	\$340,000	\$370,000	\$370,000	\$360,000	\$362,750	\$358,500	\$359,000	\$358,000
<b>2014</b>	\$352,500	\$368,500										

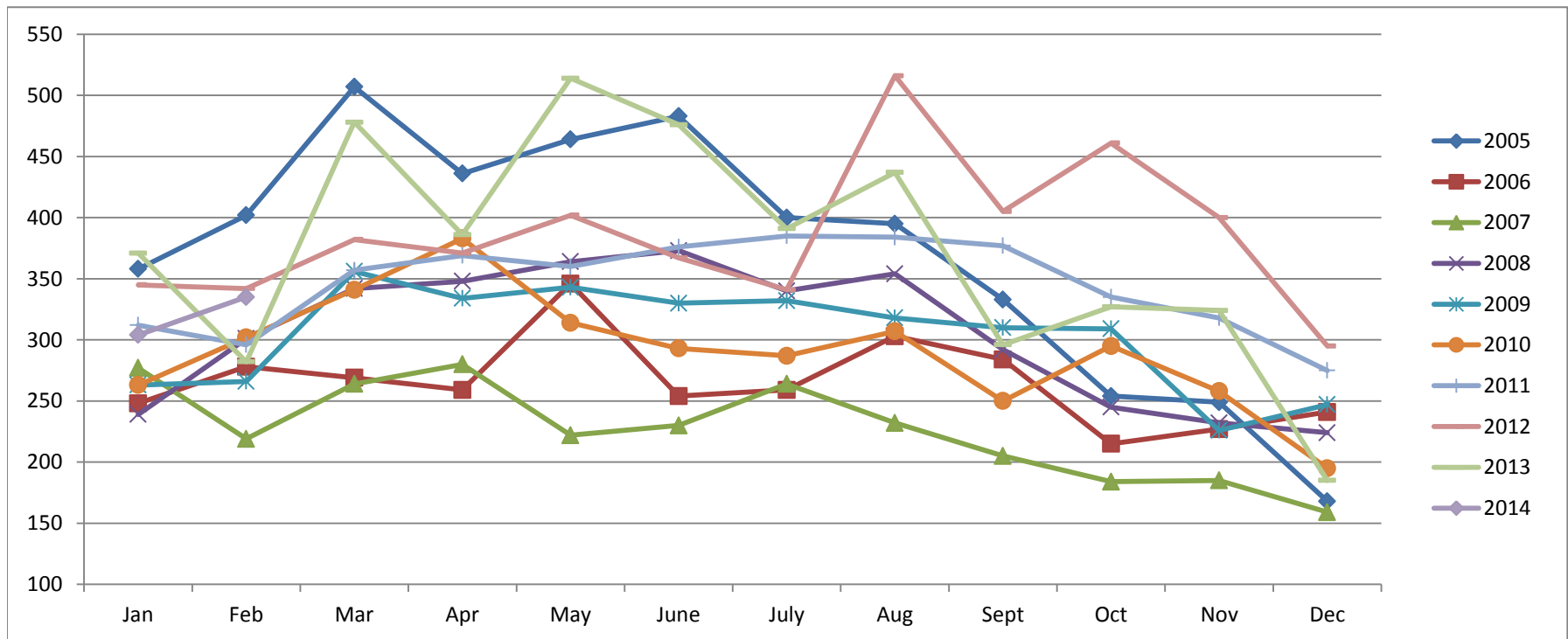


Based on MetroList™ Multiple Listing Service Data. Compiled monthly by PCAR, (916) 624-8271.

# Placer County Association of REALTORS® (PCAR) Monthly New Sales Opened (2005-2014)

(Placer County Resale Homes)

	Jan	Feb	Mar	Apr	May	June	July	Aug	Sept	Oct	Nov	Dec
<b>2005</b>	358	402	507	436	464	483	400	395	333	254	249	168
<b>2006</b>	248	278	269	259	346	254	259	303	284	215	227	241
<b>2007</b>	277	219	264	280	222	230	264	232	205	184	185	159
<b>2008</b>	239	301	342	348	364	373	340	354	292	245	232	224
<b>2009</b>	263	266	356	334	343	330	332	318	310	309	226	247
<b>2010</b>	263	302	341	383	314	293	287	307	250	295	258	195
<b>2011</b>	312	296	357	369	360	376	385	384	377	335	318	275
<b>2012</b>	345	342	382	371	402	367	341	516	405	461	400	295
<b>2013</b>	371	282	478	386	514	476	391	437	296	327	324	185
<b>2014</b>	304	335										



Based on MetroList™ Multiple Listing Service Data. Compiled monthly by PCAR, (916) 624-8271.