

# MLS Statistics

February 2013 - Placer County

## RESIDENTIAL ONLY (Single Family Homes)

Preliminary Report

	Current Month	Last Month	% Change	Last Year	% Change
New Listings Published	477	382	24.9%	473	0.8%
Listing Inventory	538	516	4.3%	1,579	-65.9%
Number of New Escrows	282	371	-24.0%	342	-17.5%
Number of Closed Escrows	364	337	8.0%	422	-13.7%
Median (1)	\$314,500	\$290,000	8.4%	\$250,000	25.8%
Mean (2)	\$362,648	\$331,161	9.5%	\$276,285	31.3%
Mode (3)	\$250,000 to \$299,999	\$250,000 to \$299,999	NA	\$200,000 to \$249,999	NA

## YEAR-TO-DATE STATISTICS

	01/01/13 to 02/28/13	01/01/13 to 01/31/13	01/01/12 to 02/28/12	% Change
New Listings Published	859	382	980	-12.3%
Number of New Escrows Opened	653	371	687	-4.9%
Number of Closed Escrows	707	337	754	-6.2%
Dollar Volume of Closed Escrows	\$245,288,806	\$111,601,354	\$210,436,576	16.6%
Median	\$300,000	\$290,000	\$250,000	20.0%
Mean	\$346,943	\$331,161	\$276,285	25.6%

## PRICE BRACKET OF SALES BASED ON FINAL SALES

Selling Price	Singlefamily Residential	Percent of Total	Condos	Resid. Income	Resid. Lots/Land
UNDER \$69,999	0	0.0%	2	0	2
\$70,000-\$79,999	0	0.0%	1	0	2
\$80,000-\$89,999	2	0.5%	3	0	1
\$90,000-\$99,999	1	0.3%	1	0	0
\$100,000-\$119,999	1	0.3%	6	0	1
\$120,000-\$139,999	6	1.6%	2	0	3
\$140,000-\$159,999	6	1.6%	3	0	2
\$160,000-\$179,999	11	3.0%	2	0	0
\$180,000-\$199,999	17	4.7%	2	0	3
\$200,000-\$249,999	48	13.2%	2	2	5
\$250,000-\$299,999	79	21.7%	0	2	2
\$300,000-\$349,999	39	10.7%	0	0	1
\$350,000-\$399,999	54	14.8%	0	0	1
\$400,000-\$449,999	25	6.9%	0	0	0
\$450,000-\$499,999	20	5.5%	0	0	0
\$500,000-\$749,999	38	10.4%	0	0	1
\$750,000-\$999,999	12	3.3%	0	0	0
OVER \$1,000,000	5	1.4%	0	0	0
<b>TOTAL</b>	<b>364</b>		<b>24</b>	<b>4</b>	<b>24</b>

### Selling Prices of Classes Listed Above

\$89,999 or less	3.1%
\$90,000-\$139,999	5.0%
\$140,000-\$179,999	5.8%
\$180,000-\$299,999	38.9%
\$300,000-\$399,999	22.8%
\$400,000-\$749,999	20.2%
\$750,000 and over	4.1%



## TYPE OF FINANCING OF UNITS SOLD

Financing	# of Units
Cash	120
Conventional	166
FHA	70
VA	14
Other	21

## LENGTH OF TIME ON MARKET

Days on Market	# of units	% of total
1-30 Days	252	64.5%
31-60 Days	55	14.1%
61-90 Days	36	9.2%
91-120 Days	18	4.6%
121+Days	30	7.7%

This representation is based in whole or part on data supplied by MetroList. MetroList does not guarantee nor is it in any way responsible for its accuracy. Data maintained by MetroList may not reflect all real estate activity in the market. All information provided is deemed reliable but is not guaranteed and should be independently verified.

1. Median: The midpoint at which an equal number of homes sold above and below this value.
2. Mean: The arithmetic average of the total number of residential sales divided into total residential sales dollar volume.
3. Mode: The price range within which the most number of homes were sold.



# Home Sales Report - February 2013

Number of New Listing:	477	Total Sales Reported Last Month:	337
Number of New Listings Last Month:	382	Sales Volume:	\$132,003,952
Total Sales Reported:	364	Average Sales Price:	\$362,648

*These figures are based on MetroList Multiple Listing Service Data. Compiled monthly by PCAR, (916) 624-8271*

ALL AREAS		# Sold	Avg. Sale Price	Last Month	Last Year	
Total Sales	364	Condos	24	\$127,390	\$135,832	\$105,959
Pending Sales	282	Houses	364	\$362,648	\$331,161	\$276,285
Total Number of Listings	538	2 Bedrooms	48	\$276,003	\$245,932	\$220,943
Median Sales Price	\$314,500	3 Bedrooms	160	\$297,011	\$276,123	\$229,532
Average Sales Price	\$362,648	4+ Bedrooms	156	\$456,628	\$412,675	\$342,537

## Breakdown By Areas

Area 12747, 12661, 12668, 12678 Roseville				Last Year	Area 12650, 12663 Loomis, Penryn				Last Year
Total Sales:	129			159	Total Sales:	10			14
Pending Sales	117			145	Pending Sales	11			10
Total Number of Listings	138			532	Total Number of Listings	43			65
Median Sales Price	\$315,000			\$259,900	Median Sales Price	\$454,300			\$206,250
Average Sales Price	\$335,454			\$273,783	Average Sales Price	\$785,410			\$232,300
	<u>#Sold</u>	<u>Avg. Sales Price</u>	<u>Last Month</u>			<u>#Sold</u>	<u>Avg. Sales Price</u>	<u>Last Month</u>	<u>Last Year</u>
Condos	13	\$123,885	\$129,546	\$95,414	Condos	0	\$0	\$0	\$0
Houses	129	\$335,454	\$298,015	\$273,783	Houses	10	\$785,410	\$476,479	\$232,300
2 Bedrooms	11	\$213,375	\$222,135	\$213,147	2 Bedrooms	0	\$0	\$0	\$165,000
3 Bedrooms	54	\$287,935	\$257,514	\$226,489	3 Bedrooms	6	\$467,517	\$329,550	\$195,522
4+ Bedrooms	64	\$396,531	\$352,979	\$345,666	4+ Bedrooms	4	\$1,262,250	\$581,429	\$331,875

Area 12746 Granite Bay				Last Year	Area 12201-12208 Lincoln				Last Year
Total Sales:	26			17	Total Sales:	80			113
Pending Sales	18			18	Pending Sales	49			61
Total Number of Listings	61			114	Total Number of Listings	80			284
Median Sales Price	\$734,750			\$450,000	Median Sales Price	\$271,245			\$242,000
Average Sales Price	\$689,766			\$501,888	Average Sales Price	\$302,790			\$261,748
	<u>#Sold</u>	<u>Avg. Sales Price</u>	<u>Last Month</u>	<u>Last Year</u>		<u>#Sold</u>	<u>Avg. Sales Price</u>	<u>Last Month</u>	<u>Last Year</u>
Condos	0	\$0	\$0	\$0	Condos	5	\$143,900	\$155,250	\$134,400
Houses	26	\$689,766	\$591,043	\$501,888	Houses	80	\$302,790	\$309,486	\$261,748
2 Bedrooms	1	\$145,000	\$0	\$0	2 Bedrooms	24	\$330,953	\$321,044	\$250,976
3 Bedrooms	7	\$472,929	\$453,350	\$360,800	3 Bedrooms	38	\$273,733	\$273,392	\$217,142
4+ Bedrooms	18	\$804,357	\$618,582	\$560,675	4+ Bedrooms	18	\$327,063	\$336,740	\$288,358

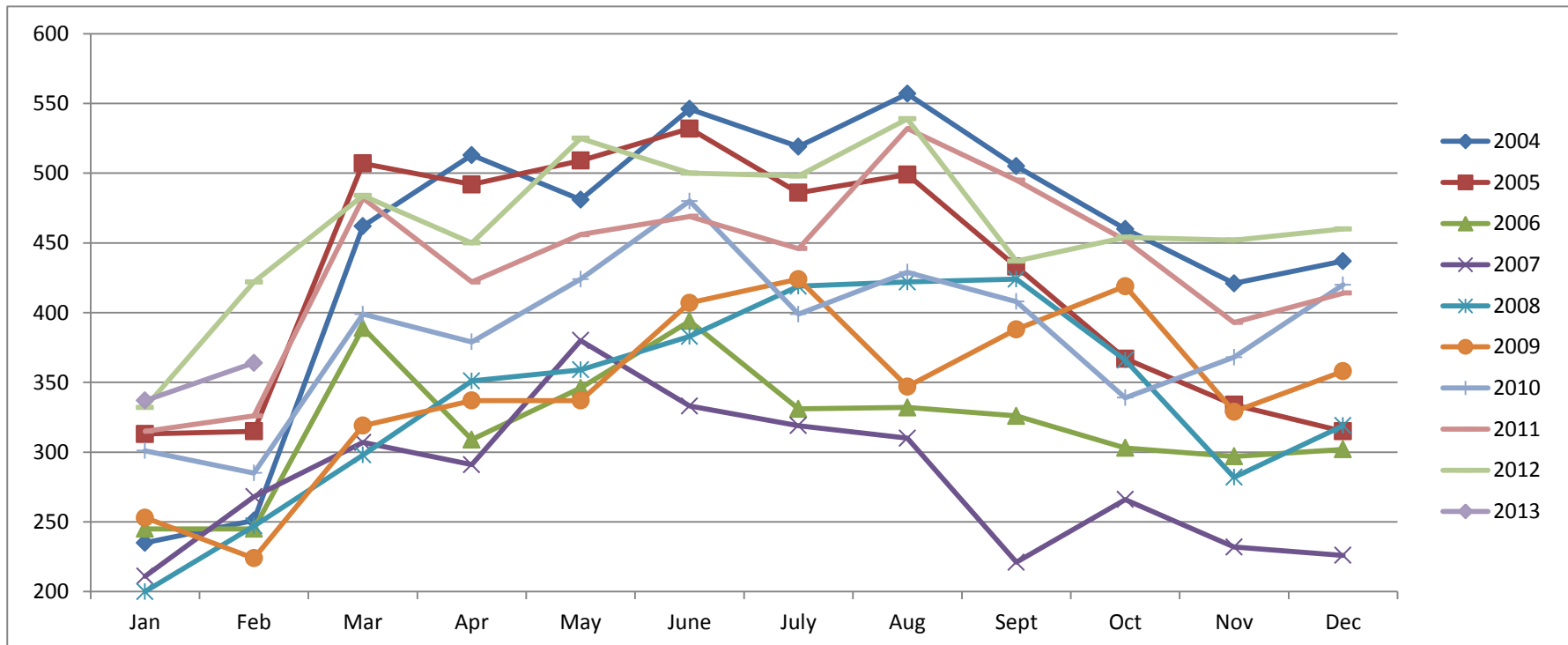
Area 12301, 12306, 12307, 12658, Auburn, Newcastle				Last Year	Area 12302, 12303, 12305 MV, GV, CX, AG, Wei, BC				Last Year
Total Sales:	39			32	Total Sales:	20			26
Pending Sales	29			29	Pending Sales	18			20
Total Number of Listings	78			184	Total Number of Listings	66			125
Median Sales Price	\$273,000			\$270,000	Median Sales Price	\$287,500			\$161,500
Average Sales Price	\$307,923			\$310,578	Average Sales Price	\$310,833			\$228,176
	<u>#Sold</u>	<u>Avg. Sales Price</u>	<u>Last Month</u>	<u>Last Year</u>		<u>#Sold</u>	<u>Avg. Sales Price</u>	<u>Last Month</u>	<u>Last Year</u>
Condos	3	\$88,283	\$0	\$110,800	Condos	0	\$0	\$0	\$0
Houses	39	\$307,923	\$373,808	\$310,578	Houses	20	\$310,833	\$234,500	\$228,176
2 Bedrooms	5	\$246,000	\$216,667	\$217,500	2 Bedrooms	4	\$136,200	\$166,333	\$145,878
3 Bedrooms	20	\$263,850	\$283,941	\$265,370	3 Bedrooms	12	\$333,447	\$281,550	\$181,222
4+ Bedrooms	14	\$393,000	\$620,909	\$485,714	4+ Bedrooms	4	\$417,625	\$219,125	\$489,000

Area 12677, 12765 Rocklin				Last Year	Area 12304 Foresthill				Last Year
Total Sales:	52			53	Total Sales:	8			8
Pending Sales	31			50	Pending Sales	9			6
Total Number of Listings	48			224	Total Number of Listings	21			49
Median Sales Price	\$346,500			\$255,000	Median Sales Price	\$176,750			\$162,050
Average Sales Price	\$362,800			\$267,325	Average Sales Price	\$203,488			\$207,463
	<u>#Sold</u>	<u>Avg. Sales Price</u>	<u>Last Month</u>	<u>Last Year</u>		<u>#Sold</u>	<u>Avg. Sales Price</u>	<u>Last Month</u>	<u>Last Year</u>
Condos	3	\$154,167	\$141,000	\$111,250	Condos	0	\$0	\$0	\$0
Houses	52	\$362,800	\$353,371	\$267,325	Houses	8	\$203,488	\$206,831	\$207,463
2 Bedrooms	3	\$349,000	\$273,167	\$0	2 Bedrooms	0	\$0	\$164,180	\$0
3 Bedrooms	17	\$306,646	\$298,658	\$235,473	3 Bedrooms	6	\$160,750	\$233,488	\$204,600
4+ Bedrooms	32	\$393,925	\$394,706	\$295,764	4+ Bedrooms	2	\$331,700	\$0	\$227,500

# Placer County Association of REALTORS® (PCAR) Monthly Closed Escrows (2004-2013)

(Placer County Resale Homes)

	Jan	Feb	Mar	Apr	May	June	July	Aug	Sept	Oct	Nov	Dec
<b>2004</b>	235	251	462	513	481	546	519	557	505	460	421	437
<b>2005</b>	313	315	507	492	509	532	486	499	433	367	334	315
<b>2006</b>	245	245	389	309	346	394	331	332	326	303	297	302
<b>2007</b>	211	268	307	291	380	333	319	310	221	266	232	226
<b>2008</b>	200	247	298	351	359	383	419	422	424	366	282	319
<b>2009</b>	253	224	319	337	337	407	424	347	388	419	329	358
<b>2010</b>	301	285	399	379	424	480	399	429	408	339	368	420
<b>2011</b>	315	326	482	422	456	469	446	532	495	452	393	414
<b>2012</b>	332	422	484	450	525	500	498	539	437	454	452	460
<b>2013</b>	337	364										

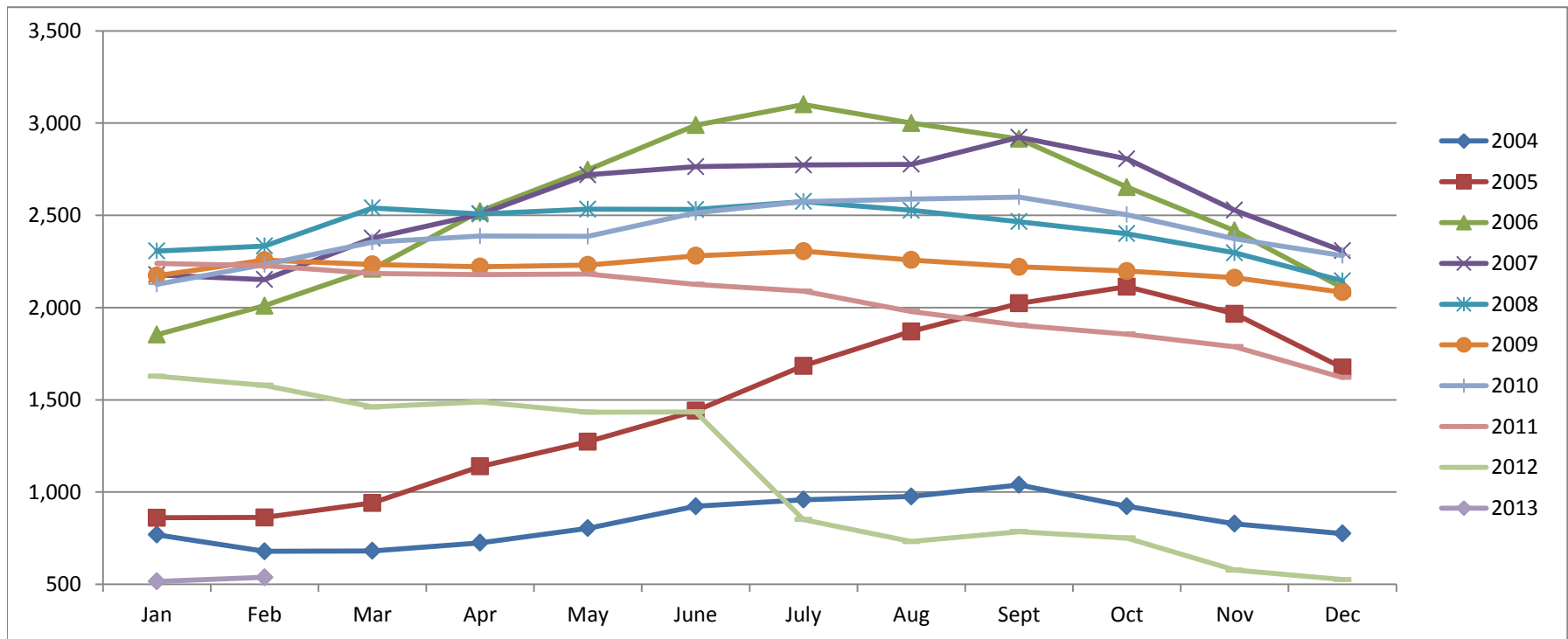


Based on MetroList™ Multiple Listing Service Data. Compiled monthly by PCAR, (916) 624-8271.

# Placer County Association of REALTORS® (PCAR) Total Listing Inventory by Month (2004-2013)

(Placer County Resale Homes)

	Jan	Feb	Mar	Apr	May	June	July	Aug	Sept	Oct	Nov	Dec
<b>2004</b>	769	679	681	725	804	923	959	976	1,039	923	828	775
<b>2005</b>	861	862	941	1,139	1,273	1,441	1,684	1,871	2,023	2,113	1,966	1,674
<b>2006</b>	1,853	2,010	2,210	2,523	2,747	2,989	3,101	3,000	2,915	2,653	2,417	2,107
<b>2007</b>	2,178	2,152	2,376	2,507	2,720	2,764	2,773	2,777	2,923	2,806	2,528	2,308
<b>2008</b>	2,307	2,334	2,540	2,508	2,533	2,532	2,575	2,527	2,466	2,401	2,297	2,145
<b>2009</b>	2,173	2,257	2,234	2,222	2,231	2,281	2,306	2,258	2,221	2,198	2,162	2,084
<b>2010</b>	2,126	2,233	2,355	2,388	2,386	2,514	2,574	2,589	2,599	2,504	2,373	2,282
<b>2011</b>	2,239	2,227	2,185	2,179	2,182	2,126	2,089	1,979	1,905	1,856	1,788	1,621
<b>2012</b>	1,628	1,579	1,461	1,489	1,433	1,435	851	732	786	751	577	526
<b>2013</b>	516	538										

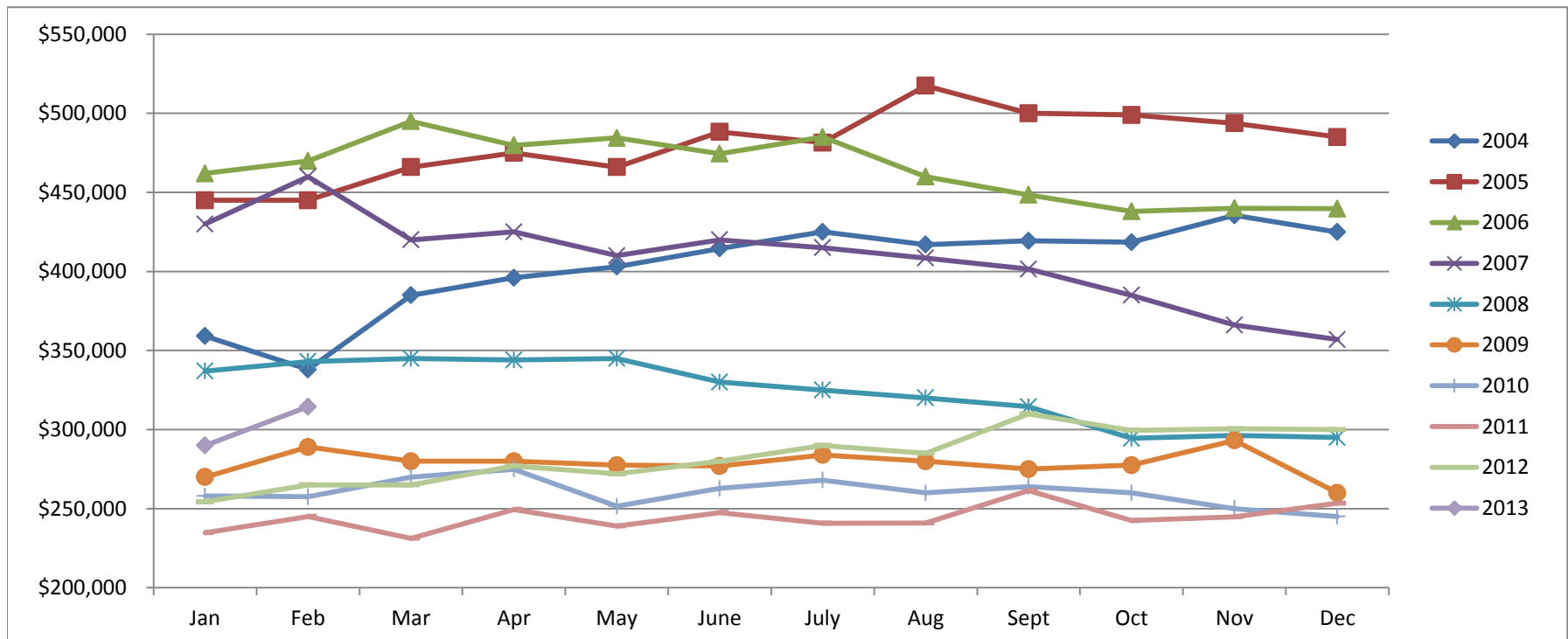


Based on MetroList™ Multiple Listing Service Data. Compiled monthly by PCAR, (916) 624-8271.

# Placer County Association of REALTORS® (PCAR) Median Price for Single-Family Detached Homes (2004-2013)

(Placer County Resale Homes)

	Jan	Feb	Mar	Apr	May	June	July	Aug	Sept	Oct	Nov	Dec
<b>2004</b>	\$359,100	\$338,000	\$385,000	\$396,000	\$403,000	\$414,500	\$425,000	\$417,000	\$419,350	\$418,500	\$435,500	\$424,975
<b>2005</b>	\$445,000	\$445,000	\$466,000	\$475,000	\$466,000	\$488,250	\$481,500	\$517,500	\$500,000	\$499,000	\$493,750	\$485,000
<b>2006</b>	\$462,000	\$469,900	\$495,000	\$479,800	\$484,500	\$474,500	\$485,000	\$460,000	\$448,500	\$438,000	\$439,974	\$439,700
<b>2007</b>	\$430,000	\$459,900	\$419,950	\$425,000	\$410,000	\$420,000	\$415,000	\$408,500	\$401,500	\$385,000	\$366,087	\$356,928
<b>2008</b>	\$337,000	\$343,000	\$345,000	\$344,000	\$345,000	\$330,000	\$325,000	\$320,000	\$314,450	\$294,450	\$296,217	\$295,000
<b>2009</b>	\$270,000	\$289,000	\$280,000	\$280,000	\$277,500	\$277,000	\$283,950	\$280,000	\$275,000	\$277,500	\$293,116	\$260,000
<b>2010</b>	\$258,000	\$257,500	\$270,000	\$274,950	\$251,500	\$262,803	\$268,000	\$260,000	\$264,000	\$260,000	\$250,000	\$245,000
<b>2011</b>	\$234,750	\$245,000	\$231,250	\$249,450	\$239,000	\$247,500	\$240,750	\$241,000	\$261,500	\$242,500	\$244,900	\$253,450
<b>2012</b>	\$254,325	\$265,000	\$265,000	\$277,000	\$272,000	\$280,000	\$290,000	\$285,000	\$310,000	\$299,500	\$300,500	\$299,975
<b>2013</b>	\$290,000	\$314,500										

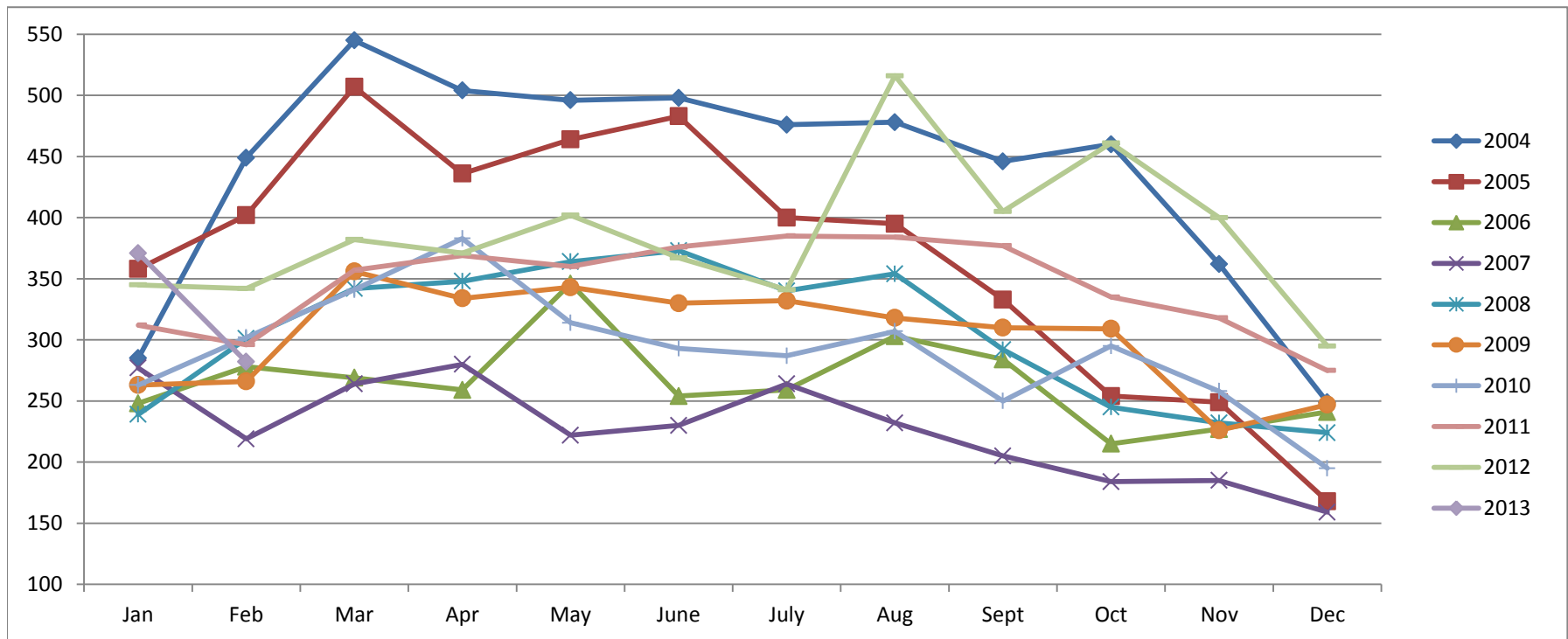


Based on MetroList™ Multiple Listing Service Data. Compiled monthly by PCAR, (916) 624-8271.

# Placer County Association of REALTORS® (PCAR) Monthly New Sales Opened (2004-2013)

(Placer County Resale Homes)

	Jan	Feb	Mar	Apr	May	June	July	Aug	Sept	Oct	Nov	Dec
<b>2004</b>	285	449	545	504	496	498	476	478	446	460	362	249
<b>2005</b>	358	402	507	436	464	483	400	395	333	254	249	168
<b>2006</b>	248	278	269	259	346	254	259	303	284	215	227	241
<b>2007</b>	277	219	264	280	222	230	264	232	205	184	185	159
<b>2008</b>	239	301	342	348	364	373	340	354	292	245	232	224
<b>2009</b>	263	266	356	334	343	330	332	318	310	309	226	247
<b>2010</b>	263	302	341	383	314	293	287	307	250	295	258	195
<b>2011</b>	312	296	357	369	360	376	385	384	377	335	318	275
<b>2012</b>	345	342	382	371	402	367	341	516	405	461	400	295
<b>2013</b>	371	282										



Based on MetroList™ Multiple Listing Service Data. Compiled monthly by PCAR, (916) 624-8271.