

MLS Statistics

DECEMBER 2012 - Placer County

RESIDENTIAL ONLY (Single Family Homes)

Preliminary Report

	Current Month	Last Month	% Change	Last Year	% Change
New Listings Published	305	423	-27.9%	422	-27.7%
Listing Inventory	526	577	-8.8%	1,621	-67.6%
Number of New Escrows	295	400	-26.3%	275	7.3%
Number of Closed Escrows	460	452	1.8%	414	11.1%
Median (1)	\$299,975	\$300,500	-0.2%	\$244,900	22.5%
Mean (2)	\$339,780	\$347,985	-2.4%	\$300,240	13.2%
Mode (3)	\$250,000 to \$299,999	\$250,000 to \$299,999	NA	\$200,000 to \$249,999	NA

YEAR-TO-DATE STATISTICS

	01/01/12 to 12/31/12	01/01/12 to 11/30/12	01/01/11 to 12/31/11	% Change
New Listings Published	5,579	5,119	6,150	-9.3%
Number of New Escrows Opened	4,483	4,188	4,144	8.2%
Number of Closed Escrows	5,665	5,126	5,202	8.9%
Dollar Volume of Closed Escrows	\$1,812,298,852	\$1,626,952,735	\$1,579,846,920	14.7%
Median	\$280,000	\$280,000	\$249,940	12.0%
Mean	\$319,912	\$317,985	\$300,240	6.6%

PRICE BRACKET OF SALES BASED ON FINAL SALES

Selling Price	Singlefamily Residential	Percent of Total	Condos	Resid. Income	Resid. Lots/Land
UNDER \$69,999	2	0.4%	7	0	0
\$70,000-\$79,999	0	0.0%	2	0	4
\$80,000-\$89,999	1	0.2%	0	0	1
\$90,000-\$99,999	4	0.9%	2	0	1
\$100,000-\$119,999	4	0.9%	3	0	2
\$120,000-\$139,999	7	1.5%	4	0	1
\$140,000-\$159,999	11	2.4%	0	0	1
\$160,000-\$179,999	14	3.0%	1	0	1
\$180,000-\$199,999	25	5.4%	2	0	0
\$200,000-\$249,999	74	16.1%	0	0	2
\$250,000-\$299,999	88	19.1%	0	0	1
\$300,000-\$349,999	69	15.0%	0	0	1
\$350,000-\$399,999	49	10.7%	0	0	1
\$400,000-\$449,999	34	7.4%	0	0	1
\$450,000-\$499,999	25	5.4%	0	0	0
\$500,000-\$749,999	37	8.0%	0	0	0
\$750,000-\$999,999	12	2.6%	0	0	0
OVER \$1,000,000	4	0.9%	0	0	0
TOTAL	460		21	0	17

Selling Prices of Classes Listed Above

\$89,999 or less	3.4%
\$90,000-\$139,999	5.6%
\$140,000-\$179,999	5.6%
\$180,000-\$299,999	38.6%
\$300,000-\$399,999	24.1%
\$400,000-\$749,999	19.5%
\$750,000 and over	3.2%



TYPE OF FINANCING OF UNITS SOLD

Financing	# of Units
Cash	140
Conventional	202
FHA	80
VA	23
Other	15

LENGTH OF TIME ON MARKET

Days on Market	# of units	% of total
1-30 Days	322	66.0%
31-60 Days	83	17.0%
61-90 Days	33	6.8%
91-120 Days	18	3.7%
121+Days	32	6.6%

This representation is based in whole or part on data supplied by MetroList. MetroList does not guarantee nor is it in any way responsible for its accuracy. Data maintained by MetroList may not reflect all real estate activity in the market. All information provided is deemed reliable but is not guaranteed and should be independently verified.

1. Median: The midpoint at which an equal number of homes sold above and below this value.
2. Mean: The arithmetic average of the total number of residential sales divided into total residential sales dollar volume.
3. Mode: The price range within which the most number of homes were sold.



Home Sales Report - December 2012

Number of New Listing:	305	Total Sales Reported Last Month:	452
Number of New Listings Last Month:	423	Sales Volume:	\$156,298,905
Total Sales Reported:	460	Average Sales Price:	\$339,780

These figures are based on MetroList Multiple Listing Service Data. Compiled monthly by PCAR, (916) 624-8271

ALL AREAS		# Sold	Avg. Sale Price	Last Month	Last Year	
Total Sales	460	Condos	21	\$99,243	\$143,839	\$110,066
Pending Sales	295	Houses	460	\$339,780	\$347,985	\$300,240
Total Number of Listings	526	2 Bedrooms	60	\$277,266	\$256,319	\$224,788
Median Sales Price	\$299,975	3 Bedrooms	196	\$290,434	\$294,686	\$247,991
Average Sales Price	\$339,780	4+ Bedrooms	204	\$405,578	\$428,663	\$382,926

Breakdown By Areas

Area 12747, 12661, 12668, 12678 Roseville				Last Year	Area 12650, 12663 Loomis, Penryn				Last Year	
Total Sales:	165			147	Total Sales:	18			11	
Pending Sales	108			100	Pending Sales	9			10	
Total Number of Listings	252			540	Total Number of Listings	46			65	
Median Sales Price	\$300,000			\$60,000	Median Sales Price				\$337,750	\$255,000
Average Sales Price	\$305,892			\$258,553	Average Sales Price				\$406,183	\$457,518
	<u>#Sold</u>	<u>Avg. Sales Price</u>	<u>Last Month</u>			<u>#Sold</u>	<u>Avg. Sales Price</u>	<u>Last Month</u>	<u>Last Year</u>	
Condos	7	\$118,414	\$150,750	\$110,754	Condos	0	\$0	\$0	\$0	
Houses	165	\$305,892	\$315,178	\$258,553	Houses	18	\$406,183	\$406,183	\$457,518	
2 Bedrooms	13	\$234,808	\$233,495	\$217,746	2 Bedrooms	1	\$330,500	\$330,500	\$300,000	
3 Bedrooms	73	\$267,544	\$274,263	\$228,982	3 Bedrooms	10	\$324,680	\$324,680	\$265,667	
4+ Bedrooms	79	\$353,024	\$377,580	\$316,088	4+ Bedrooms	7	\$533,429	\$533,429	\$562,243	

Area 12746 Granite Bay				Last Year	Area 12201-12208 Lincoln				Last Year	
Total Sales:	32			30	Total Sales:	91			98	
Pending Sales	13			8	Pending Sales	56			59	
Total Number of Listings	72			111	Total Number of Listings	167			310	
Median Sales Price	\$571,000			\$484,000	Median Sales Price				\$275,000	\$72,500
Average Sales Price	\$702,065			\$590,872	Average Sales Price				\$310,255	\$274,674
	<u>#Sold</u>	<u>Avg. Sales Price</u>	<u>Last Month</u>	<u>Last Year</u>		<u>#Sold</u>	<u>Avg. Sales Price</u>	<u>Last Month</u>	<u>Last Year</u>	
Condos	0	\$0	\$0	\$0	Condos	1	\$102,000	\$159,200	\$128,500	
Houses	32	\$702,065	\$684,373	\$590,872	Houses	91	\$310,255	\$302,147	\$274,674	
2 Bedrooms	0	\$0	\$0	\$0	2 Bedrooms	26	\$354,958	\$343,680	\$307,553	
3 Bedrooms	8	\$548,572	\$483,206	\$462,611	3 Bedrooms	30	\$258,700	\$280,885	\$207,975	
4+ Bedrooms	24	\$753,229	\$789,330	\$645,840	4+ Bedrooms	35	\$321,237	\$295,610	\$316,188	

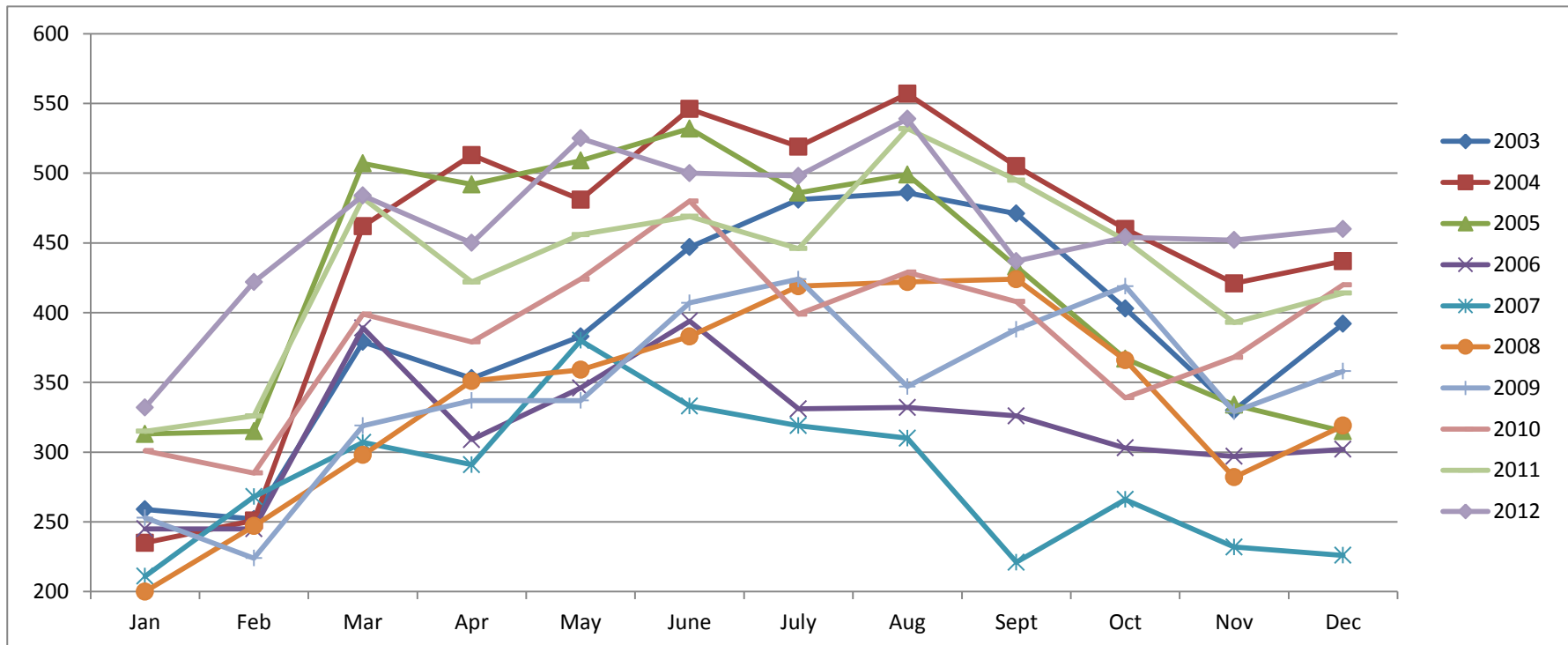
Area 12301, 12306, 12307, 12658, Auburn, Newcastle				Last Year	Area 12302, 12303, 12305 MV, GV, CX, AG, Wei, BC				Last Year	
Total Sales:	44			34	Total Sales:	32			26	
Pending Sales	42			13	Pending Sales	25			10	
Total Number of Listings	131			182	Total Number of Listings	85			129	
Median Sales Price	\$324,950			\$313,500	Median Sales Price				\$252,000	\$275,500
Average Sales Price	\$343,664			\$330,382	Average Sales Price				\$254,561	\$271,247
	<u>#Sold</u>	<u>Avg. Sales Price</u>	<u>Last Month</u>	<u>Last Year</u>		<u>#Sold</u>	<u>Avg. Sales Price</u>	<u>Last Month</u>	<u>Last Year</u>	
Condos	7	\$55,929	\$125,650	\$99,271	Condos	0	\$0	\$76,000	\$84,500	
Houses	44	\$343,664	\$325,187	\$330,382	Houses	32	\$254,561	\$269,531	\$271,247	
2 Bedrooms	3	\$246,000	\$268,700	\$144,833	2 Bedrooms	10	\$161,905	\$122,111	\$138,356	
3 Bedrooms	30	\$323,613	\$292,144	\$315,339	3 Bedrooms	17	\$308,112	\$373,627	\$247,829	
4+ Bedrooms	11	\$424,982	\$399,087	\$454,840	4+ Bedrooms	5	\$257,800	\$299,817	\$779,208	

Area 12677, 12765 Rocklin				Last Year	Area 12304 Foresthill				Last Year	
Total Sales:	75			62	Total Sales:	8			12	
Pending Sales	41			47	Pending Sales	10			7	
Total Number of Listings	94			210	Total Number of Listings	36			59	
Median Sales Price	\$309,000			\$254,500	Median Sales Price				\$179,000	\$259,450
Average Sales Price	\$332,587			\$284,831	Average Sales Price				\$196,750	\$213,783
	<u>#Sold</u>	<u>Avg. Sales Price</u>	<u>Last Month</u>	<u>Last Year</u>		<u>#Sold</u>	<u>Avg. Sales Price</u>	<u>Last Month</u>	<u>Last Year</u>	
Condos	6	\$126,950	\$155,000	\$107,944	Condos	0	\$0	\$0	\$0	
Houses	75	\$332,587	\$320,913	\$284,831	Houses	8	\$196,750	\$227,200	\$213,783	
2 Bedrooms	6	\$268,167	\$229,400	\$223,983	2 Bedrooms	1	\$58,000	\$245,000	\$87,750	
3 Bedrooms	25	\$282,825	\$265,594	\$250,848	3 Bedrooms	6	\$225,167	\$222,750	\$213,714	
4+ Bedrooms	44	\$369,645	\$391,919	\$315,652	4+ Bedrooms	1	\$165,000	\$0	\$294,967	

Placer County Association of REALTORS® (PCAR) Monthly Closed Escrows (2003-2012)

(Placer County Resale Homes)

	<i>Jan</i>	<i>Feb</i>	<i>Mar</i>	<i>Apr</i>	<i>May</i>	<i>June</i>	<i>July</i>	<i>Aug</i>	<i>Sept</i>	<i>Oct</i>	<i>Nov</i>	<i>Dec</i>
2003	259	252	379	353	383	447	481	486	471	403	330	392
2004	235	251	462	513	481	546	519	557	505	460	421	437
2005	313	315	507	492	509	532	486	499	433	367	334	315
2006	245	245	389	309	346	394	331	332	326	303	297	302
2007	211	268	307	291	380	333	319	310	221	266	232	226
2008	200	247	298	351	359	383	419	422	424	366	282	319
2009	253	224	319	337	337	407	424	347	388	419	329	358
2010	301	285	399	379	424	480	399	429	408	339	368	420
2011	315	326	482	422	456	469	446	532	495	452	393	414
2012	332	422	484	450	525	500	498	539	437	454	452	460

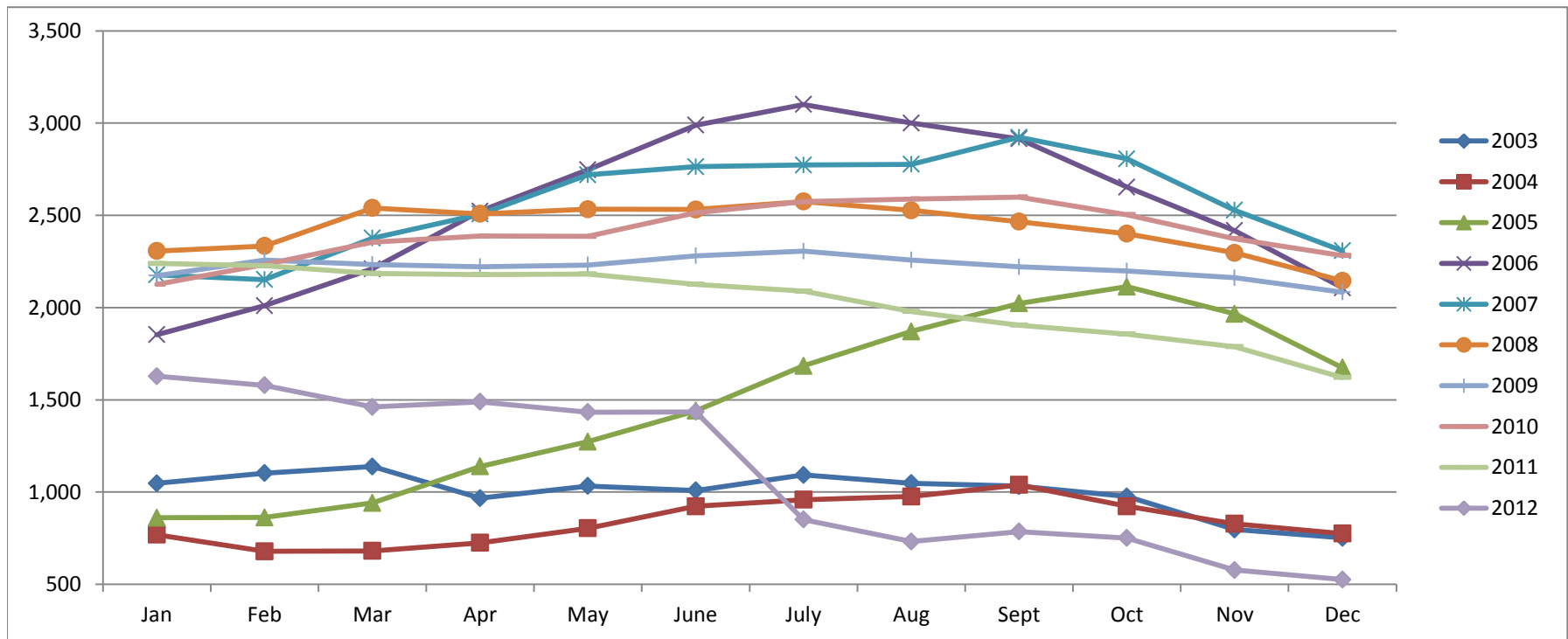


Based on MetroList™ Multiple Listing Service Data. Compiled monthly by PCAR, (916) 624-8271.

Placer County Association of REALTORS® (PCAR) Total Listing Inventory by Month (2003-2012)

(Placer County Resale Homes)

	Jan	Feb	Mar	Apr	May	June	July	Aug	Sept	Oct	Nov	Dec
2003	1,047	1,103	1,138	967	1,033	1,009	1,093	1,048	1,032	976	797	752
2004	769	679	681	725	804	923	959	976	1,039	923	828	775
2005	861	862	941	1,139	1,273	1,441	1,684	1,871	2,023	2,113	1,966	1,674
2006	1,853	2,010	2,210	2,523	2,747	2,989	3,101	3,000	2,915	2,653	2,417	2,107
2007	2,178	2,152	2,376	2,507	2,720	2,764	2,773	2,777	2,923	2,806	2,528	2,308
2008	2,307	2,334	2,540	2,508	2,533	2,532	2,575	2,527	2,466	2,401	2,297	2,145
2009	2,173	2,257	2,234	2,222	2,231	2,281	2,306	2,258	2,221	2,198	2,162	2,084
2010	2,126	2,233	2,355	2,388	2,386	2,514	2,574	2,589	2,599	2,504	2,373	2,282
2011	2,239	2,227	2,185	2,179	2,182	2,126	2,089	1,979	1,905	1,856	1,788	1,621
2012	1,628	1,579	1,461	1,489	1,433	1,435	851	732	786	751	577	526

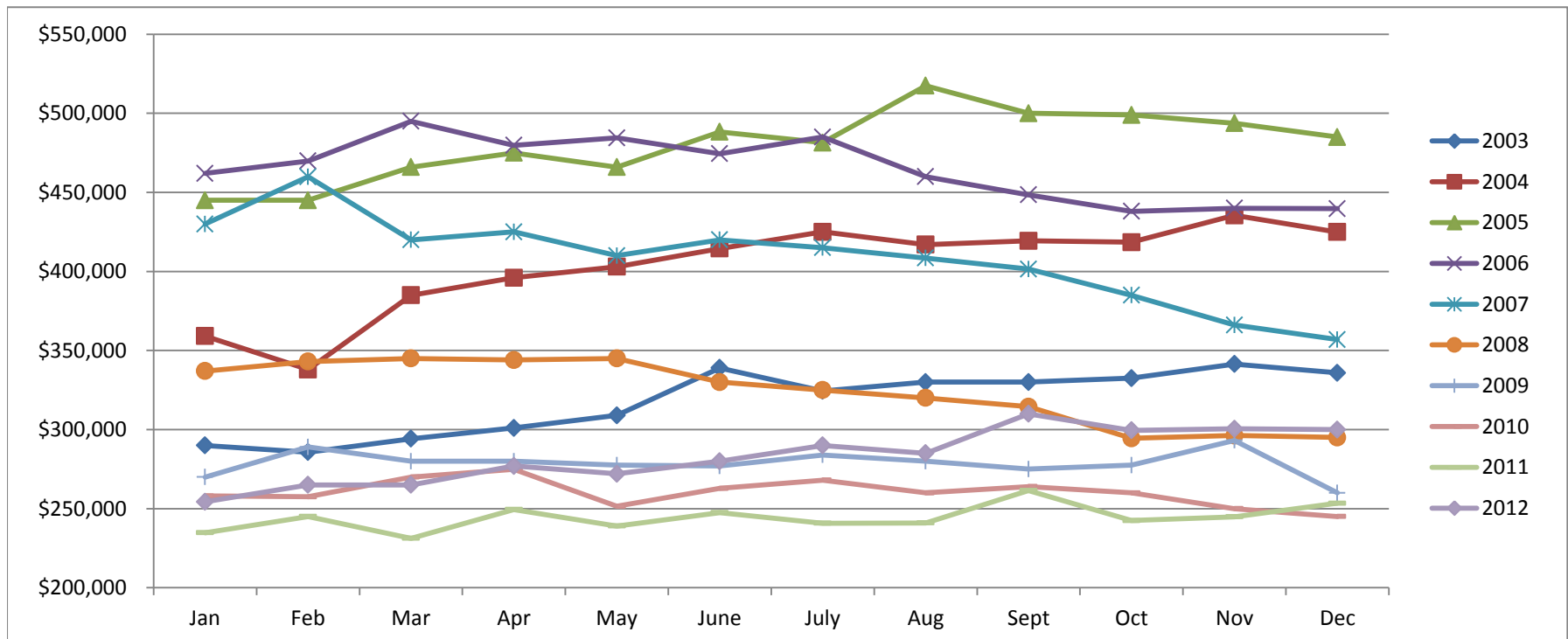


Based on MetroList™ Multiple Listing Service Data. Compiled monthly by PCAR, (916) 624-8271.

Placer County Association of REALTORS® (PCAR) Median Price for Single-Family Detached Homes (2003-2012)

(Placer County Resale Homes)

	Jan	Feb	Mar	Apr	May	June	July	Aug	Sept	Oct	Nov	Dec
2003	\$290,000	\$285,750	\$294,250	\$301,000	\$309,000	\$339,000	\$324,500	\$330,000	\$330,000	\$332,500	\$341,410	\$335,900
2004	\$359,100	\$338,000	\$385,000	\$396,000	\$403,000	\$414,500	\$425,000	\$417,000	\$419,350	\$418,500	\$435,500	\$424,975
2005	\$445,000	\$445,000	\$466,000	\$475,000	\$466,000	\$488,250	\$481,500	\$517,500	\$500,000	\$499,000	\$493,750	\$485,000
2006	\$462,000	\$469,900	\$495,000	\$479,800	\$484,500	\$474,500	\$485,000	\$460,000	\$448,500	\$438,000	\$439,974	\$439,700
2007	\$430,000	\$459,900	\$419,950	\$425,000	\$410,000	\$420,000	\$415,000	\$408,500	\$401,500	\$385,000	\$366,087	\$356,928
2008	\$337,000	\$343,000	\$345,000	\$344,000	\$345,000	\$330,000	\$325,000	\$320,000	\$314,450	\$294,450	\$296,217	\$295,000
2009	\$270,000	\$289,000	\$280,000	\$280,000	\$277,500	\$277,000	\$283,950	\$280,000	\$275,000	\$277,500	\$293,116	\$260,000
2010	\$258,000	\$257,500	\$270,000	\$274,950	\$251,500	\$262,803	\$268,000	\$260,000	\$264,000	\$260,000	\$250,000	\$245,000
2011	\$234,750	\$245,000	\$231,250	\$249,450	\$239,000	\$247,500	\$240,750	\$241,000	\$261,500	\$242,500	\$244,900	\$253,450
2012	\$254,325	\$265,000	\$265,000	\$277,000	\$272,000	\$280,000	\$290,000	\$285,000	\$310,000	\$299,500	\$300,500	\$299,975

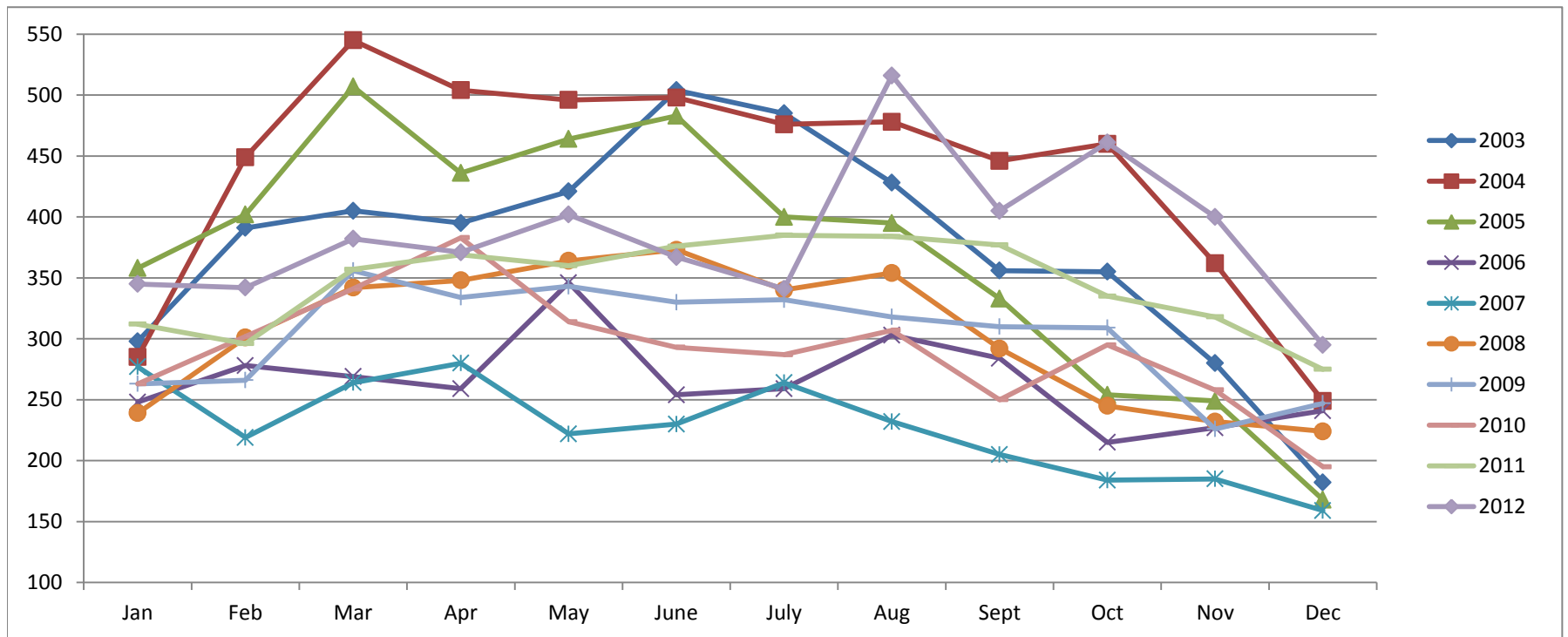


Based on MetroList™ Multiple Listing Service Data. Compiled monthly by PCAR, (916) 624-8271.

Placer County Association of REALTORS® (PCAR) Monthly New Sales Opened (2003-2012)

(Placer County Resale Homes)

	Jan	Feb	Mar	Apr	May	June	July	Aug	Sept	Oct	Nov	Dec
2003	298	391	405	395	421	504	485	428	356	355	280	182
2004	285	449	545	504	496	498	476	478	446	460	362	249
2005	358	402	507	436	464	483	400	395	333	254	249	168
2006	248	278	269	259	346	254	259	303	284	215	227	241
2007	277	219	264	280	222	230	264	232	205	184	185	159
2008	239	301	342	348	364	373	340	354	292	245	232	224
2009	263	266	356	334	343	330	332	318	310	309	226	247
2010	263	302	341	383	314	293	287	307	250	295	258	195
2011	312	296	357	369	360	376	385	384	377	335	318	275
2012	345	342	382	371	402	367	341	516	405	461	400	295



Based on MetroList™ Multiple Listing Service Data. Compiled monthly by PCAR, (916) 624-8271.