

# MLS STATISTICS

DECEMBER 2009 – Placer County

## RESIDENTIAL ONLY (Single Family Homes)

### Preliminary Report

	Current Month	Last Month	% Change	Last Year	% Change
New Listings Published.....	495	444	11.5%	448	10.5%
Listing Inventory.....	2,084	2,162	-3.6%	2,145	-2.8%
Number of New Escrows.....	247	226	9.3%	224	10.3%
Number of Closed Escrows.....	358	329	8.8%	319	12.2%
Dollar Volume of Closed Escrows...	\$117,275,751	\$118,353,533	-0.9%	\$107,304,555	9.3%
Median <sup>1</sup> .....	\$260,000	\$293,116	-11.3%	\$295,000	-11.9%
Mean <sup>2</sup> .....	\$327,586	\$359,737	-8.9%	\$336,378	-2.6%
Mode <sup>3</sup> .....	\$250,000 to \$299,999	\$250,000 TO \$299,999	NA	\$300,000 TO \$349,999	NA

## YEAR-TO-DATE STATISTICS

	1/1/09 to 12/31/09	1/1/09 to 11/30/09	1/1/08 TO 12/31/08	% Change
New Listings Published.....	6,906	6,411	7,246	-4.7%
Number of New Escrows Opened...	3,737	3,490	3,409	9.6%
Number of Closed Escrows.....	4,142	3,784	3,797	9.1%
Dollar Volume of Closed Escrows...	\$1,300,567,719	\$1,183,291,968	\$1,442,902,987	-9.9%
Median.....	\$260,000	\$293,116	\$323,000	-19.5%
Mean.....	\$327,586	\$359,737	\$388,272	-15.6%

## PRICE BRACKET OF SALES BASED ON FINAL SALES

Selling Price	Single-family Residential	Percent of Total	Condos	Resid. Income	Resid. Lots/Land
UNDER \$69,999.....	0	0.0%	2	0	2
\$70,000-\$79,999...	1	0.3%	1	0	1
\$80,000-\$89,999...	0	0.0%	2	0	0
\$90,000-\$99,999...	1	0.3%	4	0	1
\$100,000-\$119,999...	3	0.8%	5	0	0
\$120,000-\$139,999...	8	2.2%	1	0	1
\$140,000-\$159,999...	10	2.8%	9	0	0
\$160,000-\$179,999...	15	4.2%	0	0	2
\$180,000-\$199,999...	22	6.1%	2	0	0
\$200,000-\$249,999...	64	17.9%	0	1	2
\$250,000-\$299,999...	70	19.6%	1	0	0
\$300,000-\$349,999...	54	15.1%	0	0	0
\$350,000-\$399,999...	37	10.3%	0	0	0
\$400,000-\$449,999...	19	5.3%	0	1	0
\$450,000-\$499,999...	15	4.2%	0	0	0
\$500,000-\$749,999...	32	8.9%	0	0	1
\$750,000-\$999,999...	4	1.1%	0	0	0
OVER \$1,000,000.....	3	0.8%	0	0	0
<b>TOTAL.....</b>	<b>358</b>		<b>27</b>	<b>2</b>	<b>10</b>

### Selling Price of Classes Listed Above

\$89,999 or less.....	2.3%
\$90,000-\$139,999.....	6.0%
\$140,000-\$179,999.....	9.1%
\$180,000-\$299,999..	40.8%
\$300,000-\$399,999..	22.9%
\$400,000-\$749,999..	17.1%
\$750,000 and over....	1.8%



## TYPE OF FINANCING OF UNITS SOLD

Financing	# of units
Cash.....	78
Conventional.....	149
FHA.....	108
VA.....	17
Other.....	6

## LENGTH OF TIME ON MARKET

Days on Market	# of units	% of total
1-30 Days.....	172	48.04%
31-60 Days.....	45	12.57%
61-90 Days.....	40	11.17%
91-120 Days.....	29	8.10%
121+ Days.....	72	20.11%

This representation is based in whole or in part on data supplied by MetroList™. MetroList™ does not guarantee nor is it in any way responsible for its accuracy. Data maintained by MetroList™ may not reflect all real estate activity in the market. All information provided is deemed reliable but is not guaranteed and should be independently verified.

<sup>1</sup> Median: The midpoint at which an equal number of homes sold above and below this value.

<sup>2</sup> Mean: The arithmetic average of the total number of residential sales divided into total residential sales dollar volume.

<sup>3</sup> Mode: The price range within which the most number of homes were sold.



# HOME SALES REPORT DECEMBER 2009

Number of New Listings:	495	Total Sales Reported Last Month:	329
Number of New Listings Last Month:	444	Sales Volume:	\$117,275,751
Total Sales Reported:	358	Average Sales Price:	\$327,586

*These figures are based on MetroList™ Multiple Listing Service Data. Compiled monthly by PCAR, (916) 624-8271.*

ALL AREAS		#Sold	Avg. Sale Price	Last Month	Last Year
Total Sales:	358	27	\$124,296	\$130,968	\$166,427
Pending Sales:	247	358	\$327,586	\$359,737	\$336,378
Total Number of Listings:	2,084	44	\$262,770	\$260,620	\$274,043
Median Sales Price:	\$260,000	164	\$263,188	\$296,633	\$270,899
Average Sales Price	\$327,586	150	\$417,007	\$426,341	\$413,213

## Breakdown By Areas

Area 12747,12661,12668,12678 Roseville					Area 12650,12663 Loomis, Penryn				
				Last Year					Last Year
Total Sales:	119			128	Total Sales:	17			7
Pending Sales:	80			87	Pending Sales:	9			4
Total Number of Listings:	652			595	Total Number of Listings:	89			128
Median Sales Price:	\$257,000			\$289,200	Median Sales Price:	\$375,000			\$390,000
Average Sale Price:	\$316,759			\$327,329	Average Sales Price:	\$452,059			\$463,714
	# Sold	Avg. Sale Price	Last Month	Last Year		#Sold	Avg. Sale Price	Last Month	Last Year
Condos:	18	\$119,583	\$125,682	\$163,795	Condos:	0	\$0.00	\$0.00	\$0.00
Houses:	119	\$316,759	\$318,322	\$327,329	Houses:	17	\$452,059	\$480,075	\$463,714
2 Bedrooms:	9	\$195,000	\$237,667	\$238,450	2 Bedrooms:	3	\$303,000	\$0.00	\$72,000
Bedrooms:	56	\$271,155	\$273,167	\$268,552	3 Bedrooms:	7	\$368,143	\$528,683	\$326,333
4+Bedrooms:	54	\$384,346	\$375,923	\$396,822	4+ Bedrooms:	7	\$599,857	\$334,250	\$731,667

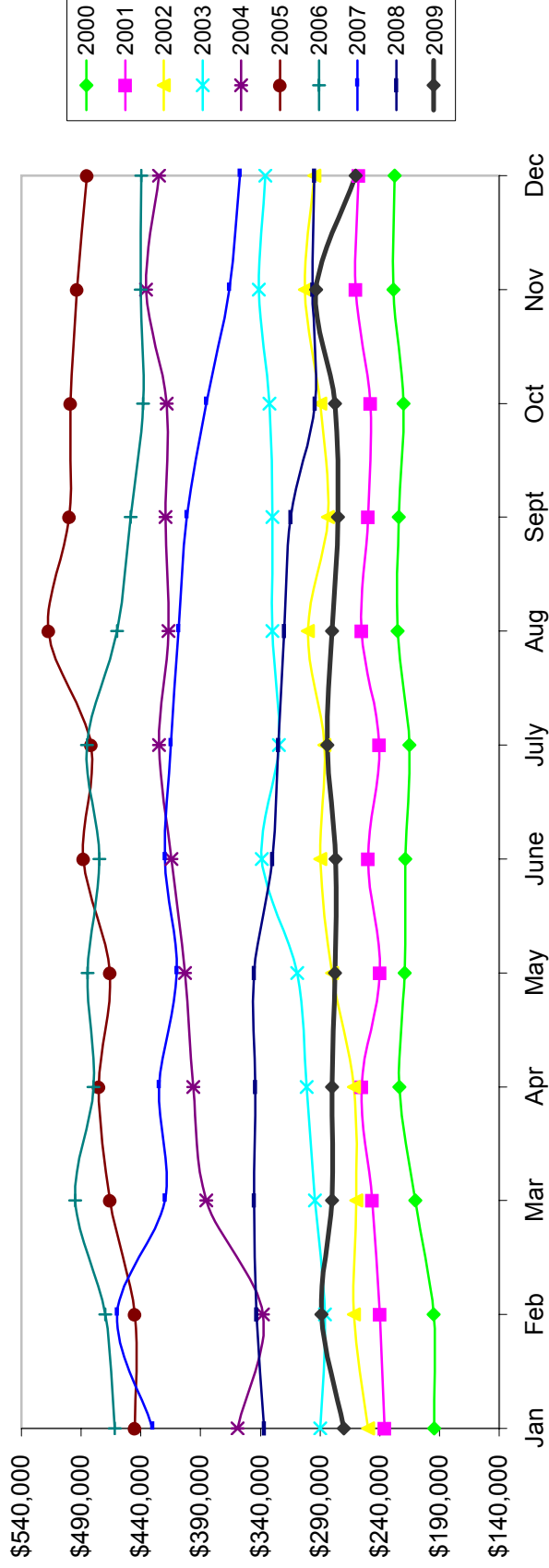
Area 12746 Granite Bay					Area 12201-12208 Lincoln				
				Last Year					Last Year
Total Sales:	19			6	Total Sales:	97			85
Pending Sales:	14			4	Pending Sales:	57			54
Total Number of Listings:	161			194	Total Number of Listings:	459			452
Median Sales Price:	\$550,000			\$333,500	Median Sales Price:	\$254,000			\$295,000
Average Sale Price:	\$697,244			\$448,500	Average Sales Price:	\$276,017			\$309,273
	#Sold	Avg. Sale Price	Last Month	Last Year		#Sold	Avg. Sale Price	Last Month	Last Year
Condos:	0	\$0.00	\$0.00	\$0.00	Condos:	1	\$150,000	\$168,000	\$225,000
Houses:	19	\$697,244	\$653,467	\$448,500	Houses:	97	\$276,017	\$283,235	\$309,273
2 Bedrooms:	0	\$0.00	\$0.00	\$0.00	2 Bedrooms:	19	\$320,632	\$291,155	\$342,200
3 Bedrooms:	5	\$282,200	\$498,700	\$270,000	3 Bedrooms:	43	\$226,616	\$261,574	\$225,086
4+Bedrooms:	14	\$845,474	\$687,113	\$537,750	4+ Bedrooms:	35	\$312,491	\$291,937	\$379,348

Area 12301, 12306, 12307,12658, Auburn, Newcastle					Area 12302, 12303, 12305 MV, GV, CX, Apt, Wei, BC, Nrdn				
				Last Year					Last Year
Total Sales:	27			24	Total Sales:	17			16
Pending Sales:	17			17	Pending Sales:	13			9
Total Number of Listings:	240			257	Total Number of Listings:	138			172
Median Sales Price:	\$266,000			\$286,500	Median Sales Price:	\$199,900			\$253,500
Average Sales Price:	\$316,848			\$347,289	Average Sales Price:	\$287,452			\$311,533
	#Sold	Avg. Sale Price	Last Month	Last Year		#Sold	Avg. Sale Price	Last Month	Last Year
Condos:	2	\$100,250	\$89,300	\$93,038	Condos:	0	\$0.00	\$0.00	\$0.00
Houses:	27	\$316,848	\$360,238	\$347,289	Houses:	17	\$287,452	\$401,289	\$311,533
2 Bedrooms:	7	\$254,271	\$239,500	\$216,000	2 Bedrooms:	3	\$156,000	\$218,534	\$182,750
3 Bedrooms:	14	\$311,143	\$251,929	\$298,462	3 Bedrooms:	10	\$249,229	\$338,143	\$368,778
4+Bedrooms:	6	\$403,167	\$460,202	\$456,156	4+Bedrooms:	4	\$481,600	\$709,000	\$311,509

Area 12677, 12765 Rocklin					Area 12304 Foresthill				
				Last Year					Last Year
Total Sales:	59			52	Total Sales:	4			3
Pending Sales:	31			41	Pending Sales:	4			3
Total Number of Listings:	292			273	Total Number of Listings:	54			58
Median Sales Price:	\$265,000			\$306,500	Median Sales Price:	\$213,000			\$375,000
Average Sales Price:	\$307,880			\$373,227	Average Sales Price:	\$261,225			\$349,667
	#Sold	Avg. Sale Price	Last Month	Last Year		#Sold	Avg. Sale Price	Last Month	Last Year
Condos:	3	\$117,667	\$160,000	\$196,375	Condos:	0	\$0.00	\$0.00	\$0.00
Houses:	59	\$307,880	\$358,120	\$373,227	Houses:	4	\$261,225	\$359,633	\$349,667
2 Bedrooms:	1	\$232,500	\$258,125	\$311,500	2 Bedrooms:	0	\$0.00	\$0.00	\$0.00
3 Bedrooms:	27	\$258,233	\$253,701	\$282,105	3 Bedrooms:	4	\$261,225	\$359,633	\$337,000
4+Bedrooms:	31	\$353,553	\$403,434	\$433,059	4+Bedrooms:	0	\$0.00	\$0.00	\$375,000

# Placer County Association of REALTORS® (PCAR) Median Price for Single-Family Detached Homes (2000-2009) (Placer County Resale Homes)

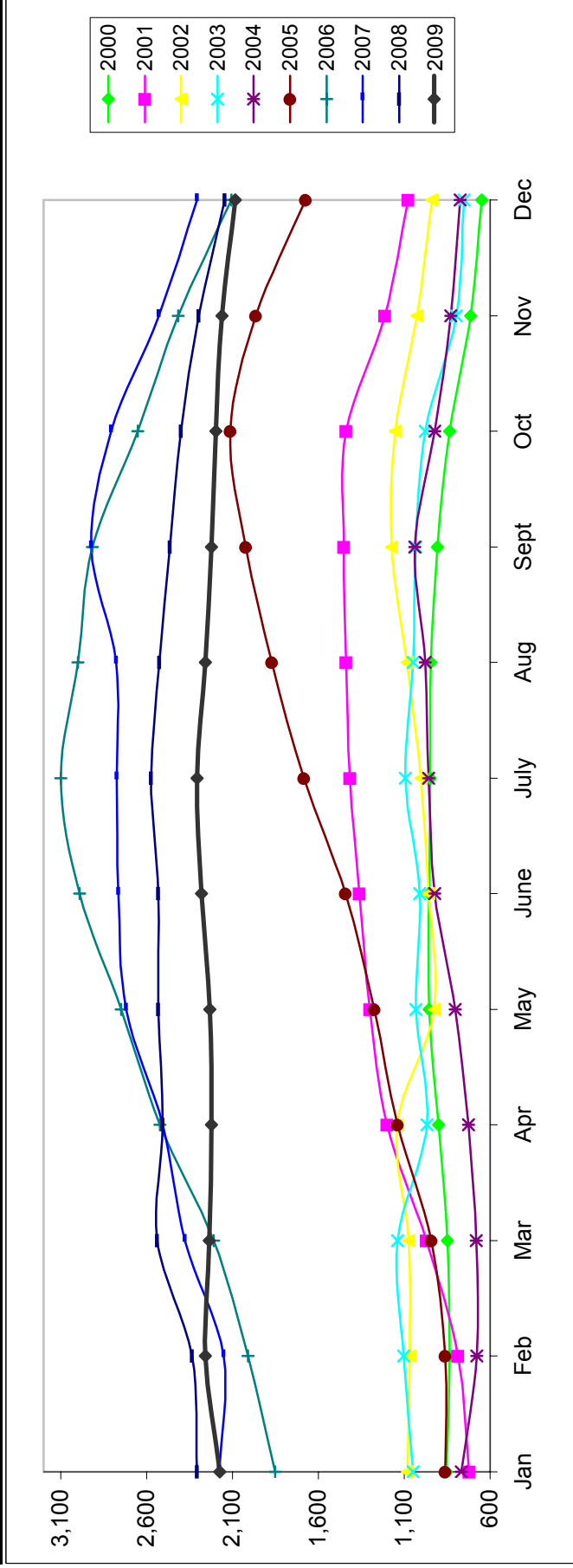
	Jan	Feb	Mar	Apr	May	June	July	Aug	Sept	Oct	Nov	Dec
2000	\$194,500	\$195,000	\$210,000	\$223,500	\$219,250	\$218,500	\$215,000	\$225,000	\$224,000	\$220,000	\$228,750	\$227,750
2001	\$236,000	\$240,000	\$246,500	\$255,000	\$239,900	\$250,000	\$240,250	\$255,000	\$250,000	\$248,000	\$260,000	\$257,750
2002	\$250,000	\$261,500	\$259,900	\$261,500	\$279,950	\$290,000	\$286,600	\$300,000	\$283,500	\$290,000	\$302,500	\$295,000
2003	\$290,000	\$285,750	\$294,250	\$301,000	\$309,000	\$339,000	\$324,500	\$330,000	\$330,000	\$332,500	\$341,410	\$335,900
2004	\$359,100	\$338,000	\$385,000	\$396,000	\$403,000	\$414,500	\$425,000	\$417,000	\$419,350	\$418,500	\$435,500	\$424,975
2005	\$445,000	\$445,000	\$466,000	\$475,000	\$466,000	\$488,250	\$481,500	\$517,500	\$500,000	\$499,000	\$493,750	\$485,000
2006	\$462,000	\$469,900	\$495,000	\$479,800	\$484,500	\$474,500	\$485,000	\$460,000	\$448,500	\$438,000	\$439,974	\$439,700
2007	\$430,000	\$459,900	\$419,950	\$425,000	\$410,000	\$420,000	\$415,000	\$408,500	\$401,500	\$385,000	\$366,087	\$356,928
2008	\$337,000	\$343,000	\$345,000	\$344,000	\$345,000	\$330,000	\$325,000	\$320,000	\$314,450	\$294,450	\$296,217	\$295,000
2009	\$270,000	\$289,000	\$280,000	\$280,000	\$277,500	\$277,000	\$283,950	\$280,000	\$275,000	\$277,500	\$293,116	\$260,000



Based on MetroList™ Multiple Listing Service Data. Compiled monthly by PCAR, (916) 624-8271.

# Placer County Association of REALTORS® (PCAR) Total Listing Inventory by Month (2000-2009) (Placer County Resale Homes)

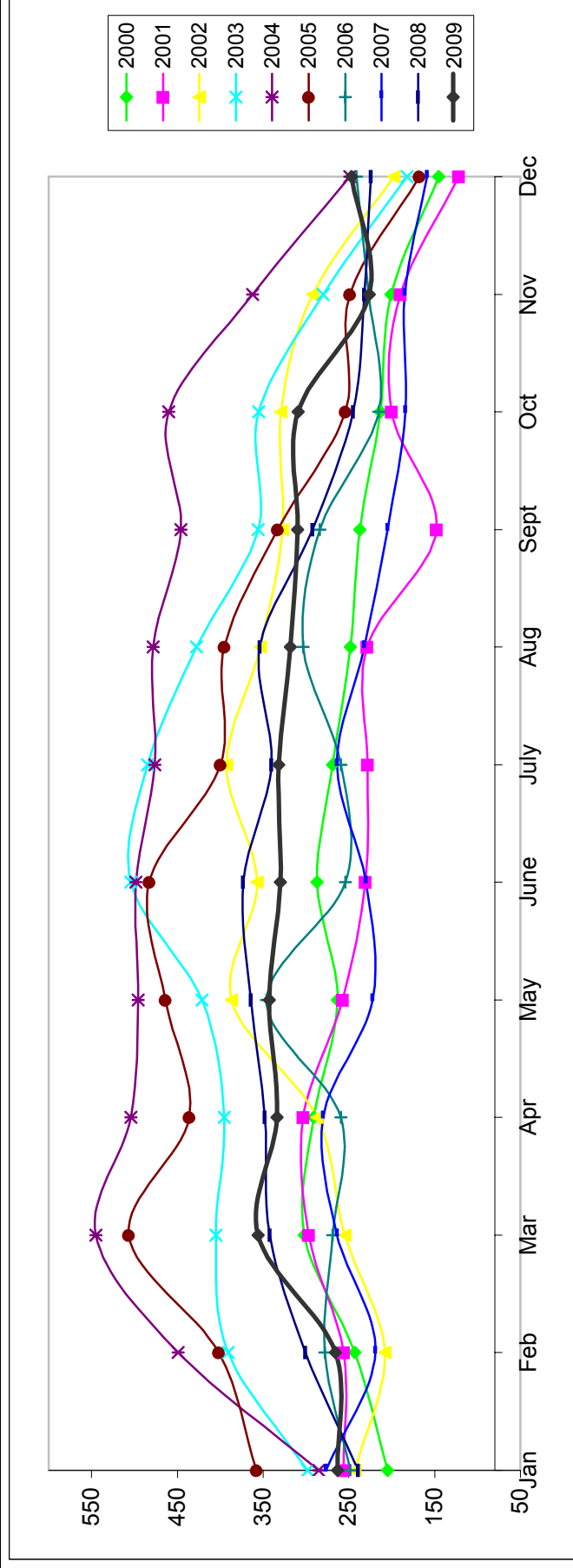
	Jan	Feb	Mar	Apr	May	June	July	Aug	Sept	Oct	Nov	Dec
2000	855	836	847	900	954	954	950	946	906	834	712	650
2001	723	787	972	1,200	1,301	1,362	1,417	1,440	1,452	1,438	1,213	1,077
2002	1,082	1,069	1,075	1,143	926	958	1,002	1,083	1,174	1,152	1,025	940
2003	1,047	1,103	1,138	967	1,033	1,009	1,093	1,048	1,032	976	797	752
2004	769	679	681	725	804	923	959	976	1,039	923	828	775
2005	861	862	941	1,139	1,273	1,441	1,684	1,871	2,023	2,113	1,966	1,674
2006	1,853	2,010	2,210	2,523	2,747	2,989	3,101	3,000	2,915	2,653	2,417	2,107
2007	2,178	2,152	2,376	2,507	2,720	2,764	2,773	2,777	2,923	2,806	2,528	2,308
2008	2,307	2,334	2,540	2,508	2,533	2,532	2,575	2,527	2,466	2,401	2,297	2,145
2009	2,173	2,257	2,234	2,222	2,231	2,281	2,306	2,258	2,221	2,198	2,162	2,084



Based on MetroList™ Multiple Listing Service Data. Compiled monthly by PCAR, (916) 624-8271.

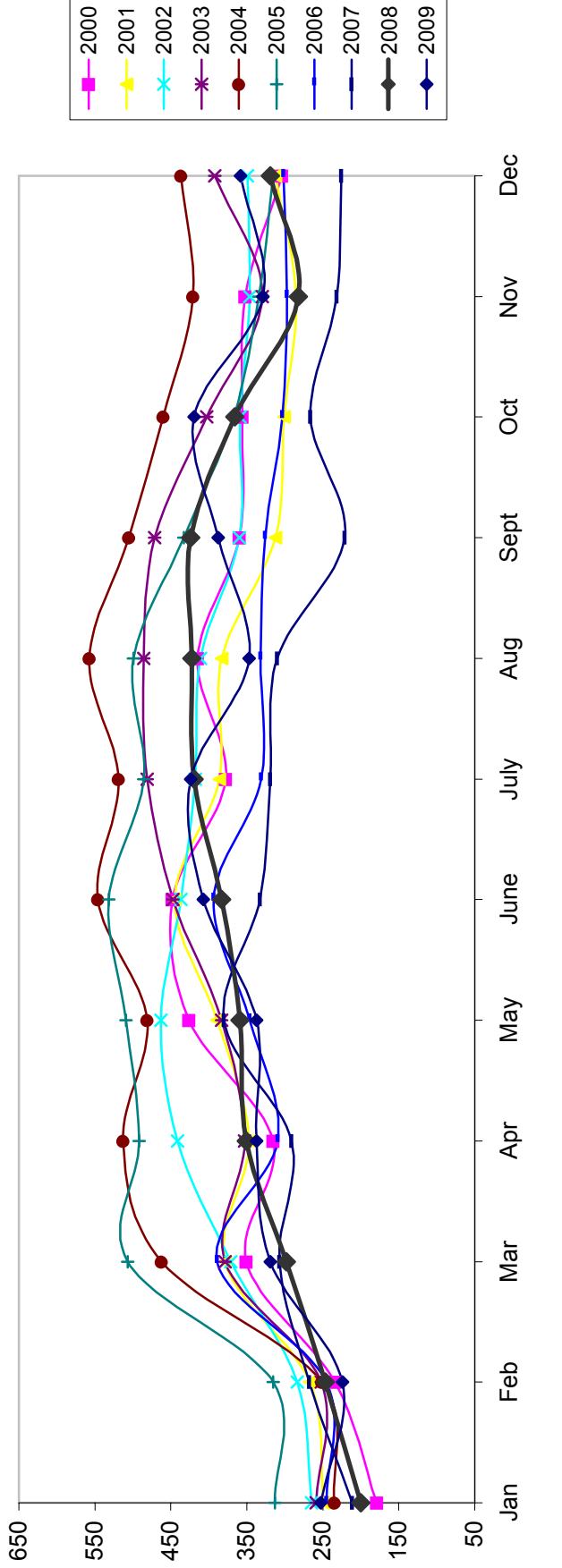
# Placer County Association of REALTORS® (PCAR) Monthly New Sales Opened (2000-2009) (Placer County Resale Homes)

Year	Jan	Feb	Mar	Apr	May	June	July	Aug	Sept	Oct	Nov	Dec
2000	205	243	302	291	263	287	269	248	237	213	201	145
2001	256	256	297	303	257	231	228	229	148	200	190	122
2002	243	208	255	287	387	357	393	353	327	329	292	198
2003	298	391	405	395	421	504	485	428	356	355	280	182
2004	285	449	545	504	496	498	476	478	446	460	362	249
2005	358	402	507	436	464	483	400	395	333	254	249	168
2006	248	278	269	259	346	254	259	303	284	215	227	241
2007	277	219	264	280	222	230	264	232	205	184	185	159
2008	239	301	342	348	364	373	340	354	292	245	232	224
2009	263	266	356	334	343	330	332	318	310	309	226	247



# Placer County Association of REALTORS® (PCAR) Monthly Closed Escrows (2000-2009) (Placer County Resale Homes)

	Jan	Feb	Mar	Apr	May	June	July	Aug	Sept	Oct	Nov	Dec
2000	179	234	351	315	426	448	378	415	360	356	352	304
2001	249	267	379	347	389	445	386	383	312	301	285	312
2002	265	284	371	441	463	437	418	411	360	359	346	349
2003	259	252	379	353	383	447	481	486	471	403	330	392
2004	235	251	462	513	481	546	519	557	505	460	421	437
2005	313	315	507	492	509	532	486	499	433	367	334	315
2006	245	245	389	309	346	394	331	332	326	303	297	302
2007	211	268	307	291	380	333	319	310	221	266	232	226
2008	200	247	298	351	359	383	419	422	424	366	282	319
2009	253	224	319	337	337	407	424	347	388	419	329	358



Based on MetroList™ Multiple Listing Service Data. Compiled monthly by PCAR, (916) 624-8271.